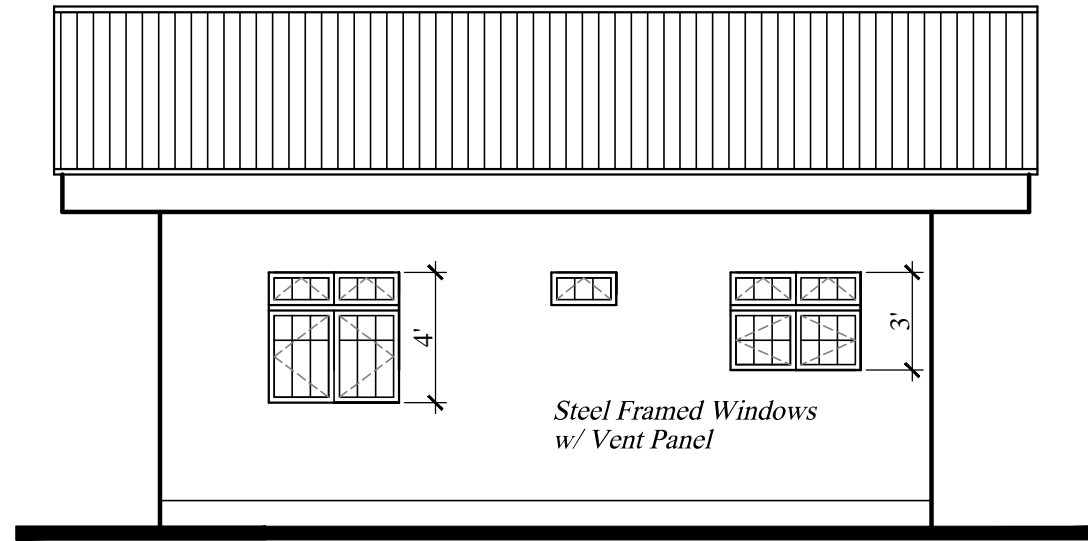


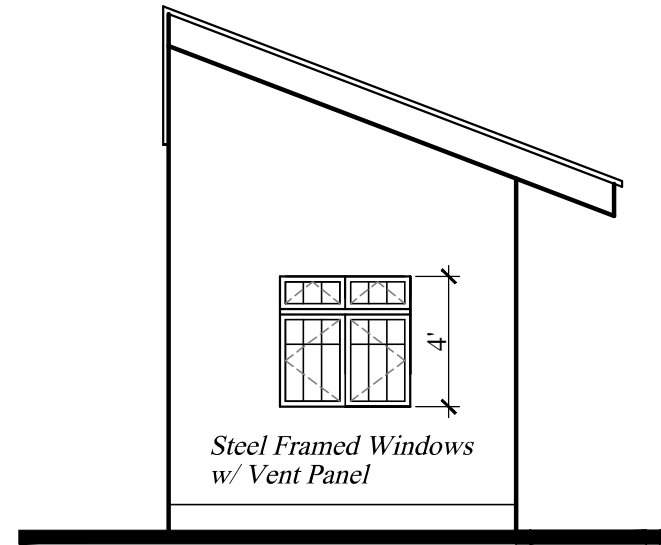
FLOOR PLAN
256.00 S.F.
1 Bedroom Flat

CROSS SECTION

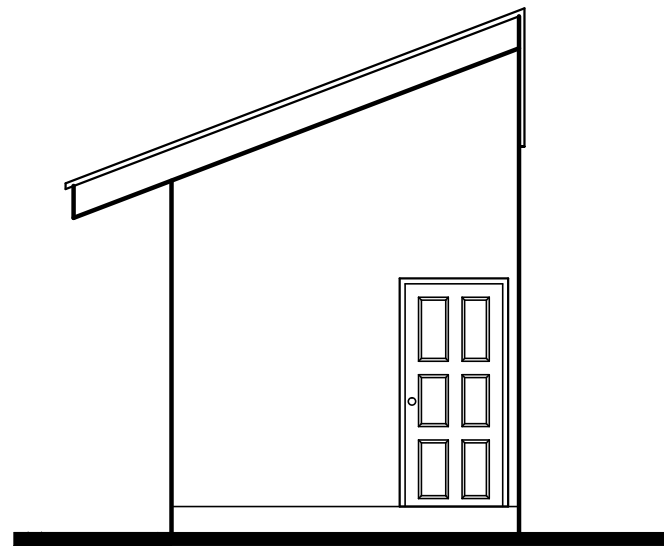
FLOOR PLAN AND CROSS SECTION	No.	Date	Notes	No.	Date	Revisions	Drawn By	Appr. By	CONSULTANTS: A & L ESTATE MANAGEMENT CONSULTANCY LIMITED #6 JADE BOULEVARD, EMPEROR COURT, BON AIR GARDENS, AROUCA TRINIDAD W.I. TEL: 642-4820 OR 681-7587	CLIENT: MINISTRY OF HOUSING LAND AND MARINE AFFAIRS		
	1 BEDROOM FLAT									JOB TITLE: NEIGHBOURHOOD UPGRADING PROGRAMME STARTER HOUSING UNITS		
GNC Services For Architectural Designs & General Drafting		ENGINEER: FRANCIS ANTOINE		DATE: AUGUST 2013		SCALE: 3/8" = 1'-0"		DWG. NO.:		1BF / 01		
Drawn By: KURT FORDE		Checked By: N.C.										



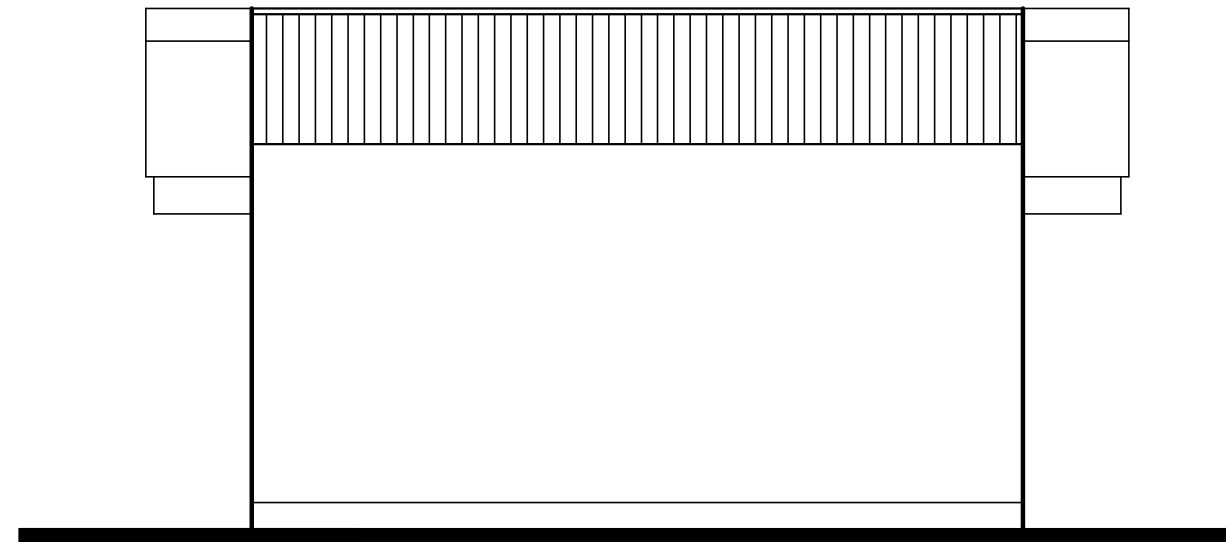
ELEVATION 3



ELEVATION 2

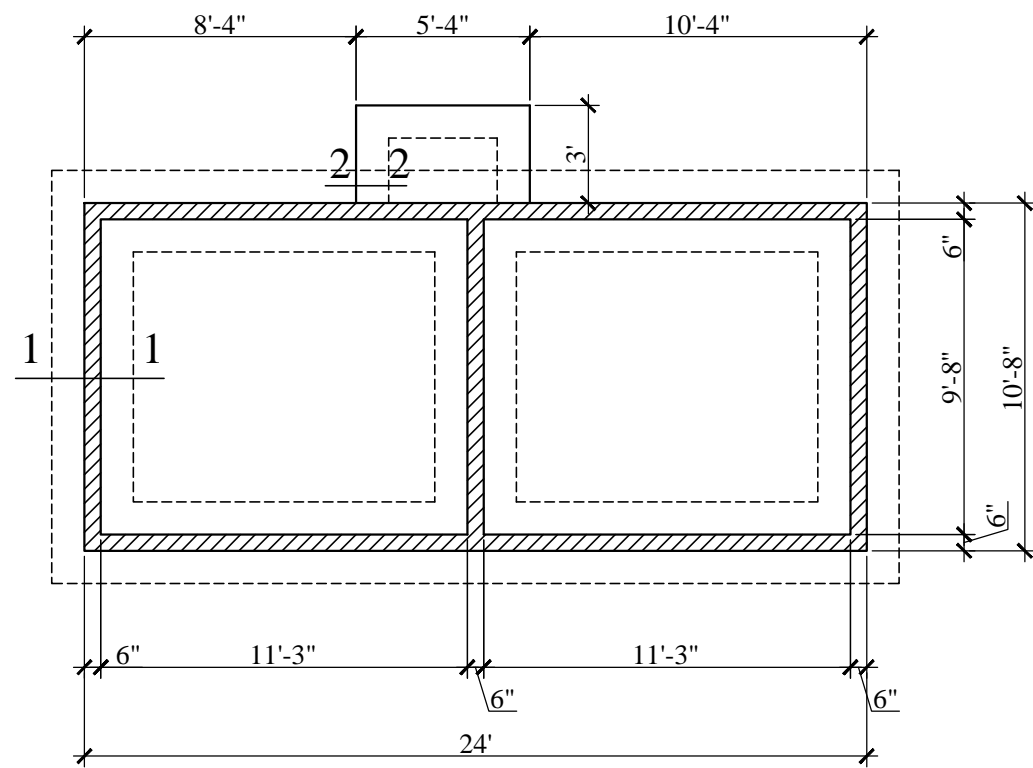


ELEVATION 4

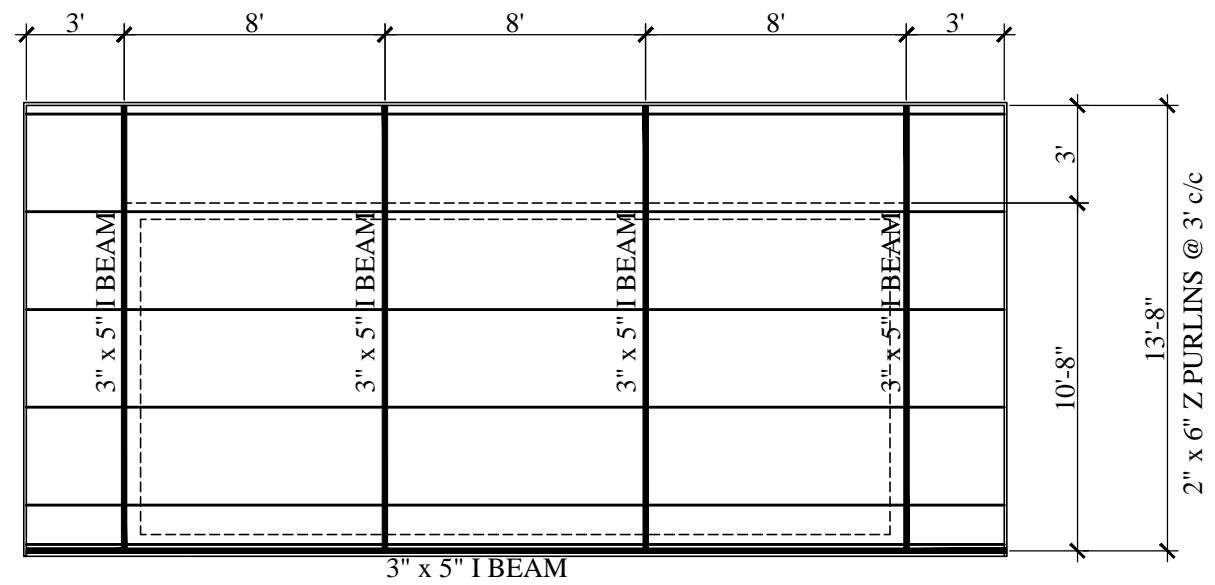


ELEVATION 1

ELEVATIONS	No.	Date	Notes	No.	Date	Revisions	Drawn By	Appr. By	CONSULTANTS: A & L ESTATE MANAGEMENT CONSULTANCY LIMITED #6 JADE BOULEVARD, EMPEROR COURT, BON AIR GARDENS, AROUCA TRINIDAD W.I. TEL: 642-4820 OR 681-7587	CLIENT: MINISTRY OF HOUSING LAND AND MARINE AFFAIRS
	1 BEDROOM FLAT									
							ENGINEER: FRANCIS ANTOINE	DATE: AUGUST 2013	SCALE: 3/8" = 1'-0"	DWG. NO.: 1BF / 02



FOUNDATION PLAN



ROOF FRAMING PLAN

FOUNDATION AND
ROOF PLANS

1 BEDROOM FLAT

No.	Date	Notes	No.	Date	Revisions	Drawn By	Appr. By

CONSULTANTS:
**A & L ESTATE MANAGEMENT
CONSULTANCY LIMITED**
#6 JADE BOULEVARD, EMPEROR COURT,
BON AIR GARDENS, AROUCA
TRINIDAD W.I.
TEL: 642-4820 OR 681-7587

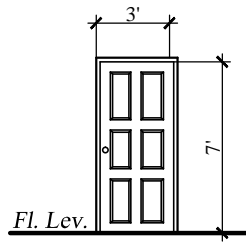
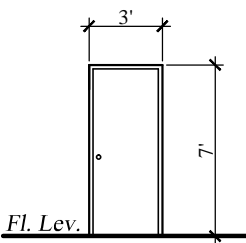
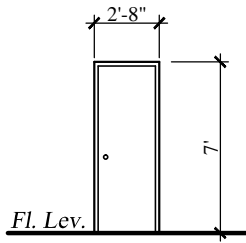
GNC Services
For Architectural Designs & General Drafting
Drawn By: Noreen Christopher Checked By: ENGINEER:
FRANCIS ANTOINE

CLIENT:
MINISTRY OF HOUSING LAND AND MARINE AFFAIRS

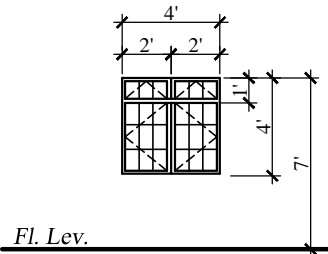
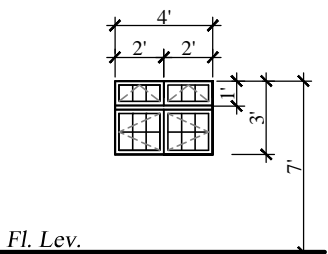
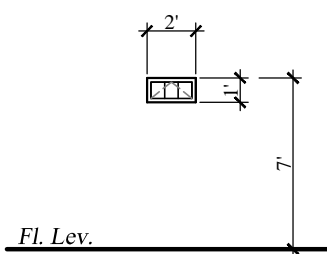
JOB TITLE:
NEIGHBOURHOOD UPGRADING PROGRAMME
STARTER HOUSING UNITS

DATE: AUGUST 2013 SCALE: 3/8" = 1'-0" DWG. NO.: **1BF / 03**

DOOR SCHEDULE

		
(D1)	(D2)	(D3)
DESCRIPTION	1	1
NO: REQUIRED	Entrance	Bedrooms
LOCATION	Solid Core Panel Door	Semi-Solid Flush Door
REMARKS		Semi-Solid Flush Door

WINDOW SCHEDULE

		
(W1)	(W2)	(W3)
DESCRIPTION	2	1
NO: REQUIRED	Bedroom	Kitchen
LOCATION	Steel Framed Windows w/ Burglar Proof Bars	Steel Framed Windows w/ Burglar Proof Bars
REMARKS		Top Hung Steel Framed Window w/ Burglar Proof Bars

DOOR & WINDOW SCHEDULE

1 BEDROOM FLAT

No.	Date	Notes	No.	Date	Revisions	Drawn By	Appr. By

CONSULTANTS:
A & L ESTATE MANAGEMENT CONSULTANCY LIMITED
 #6 JADE BOULEVARD, EMPEROR COURT,
 BON AIR GARDENS, AROUCA
 TRINIDAD W.I.
 TEL: 642-4820 OR 681-7587

ENGINEER:
 FRANCIS ANTOINE

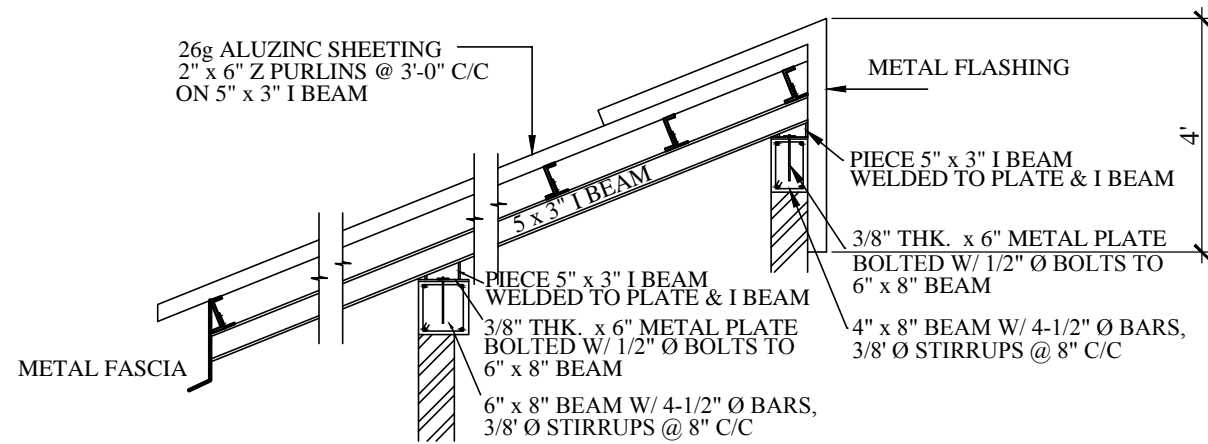
GNC Services
 For Architectural Designs & General Draughting

Drawn By: Noreen Christopher Checked By: _____

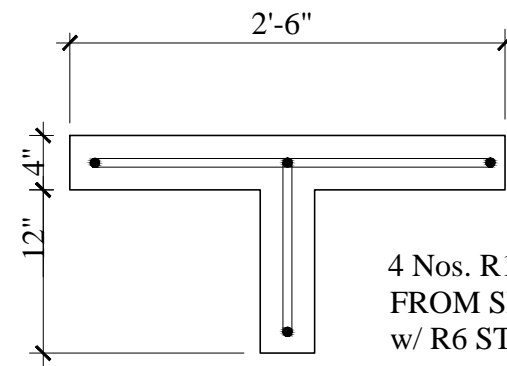
CLIENT:
 MINISTRY OF HOUSING LAND AND MARINE AFFAIRS

JOB TITLE:
 NEIGHBOURHOOD UPGRADING PROGRAMME
 STARTER HOUSING UNITS

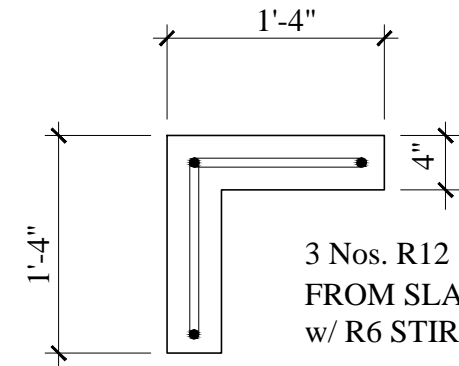
DATE: AUGUST 2013 **SCALE:** 3/8" = 1'-0" **DWG. NO.:** 1BF / 04



ROOF ANCHORAGE DETAIL

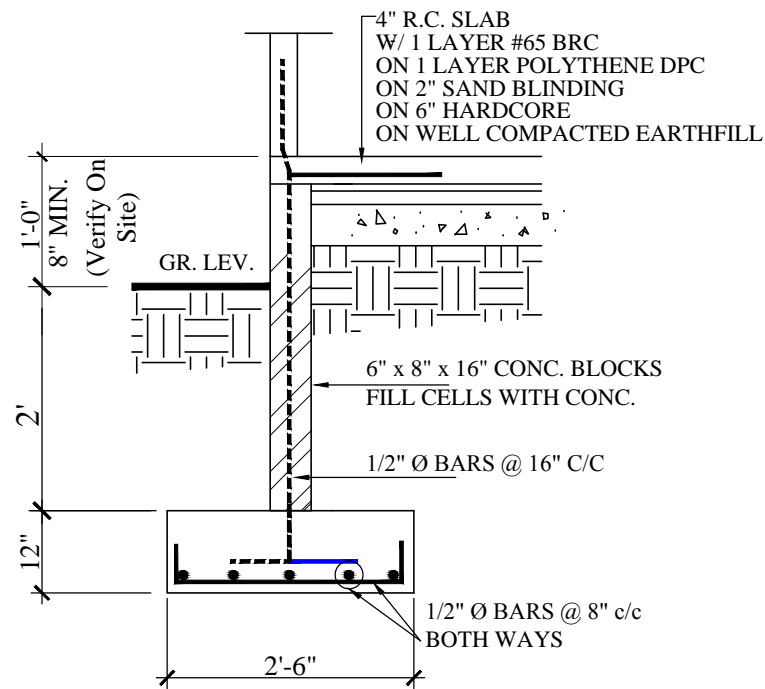


't' junction detail

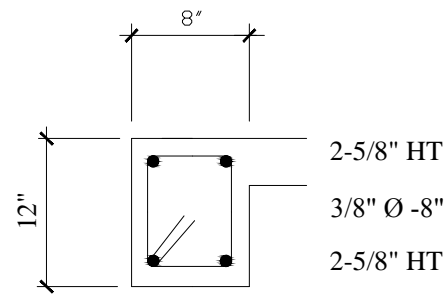


corner detail

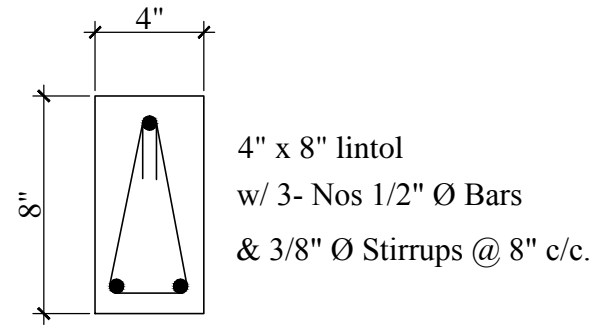
WALL STIFFENERS DETAILS



DETAIL 1-1



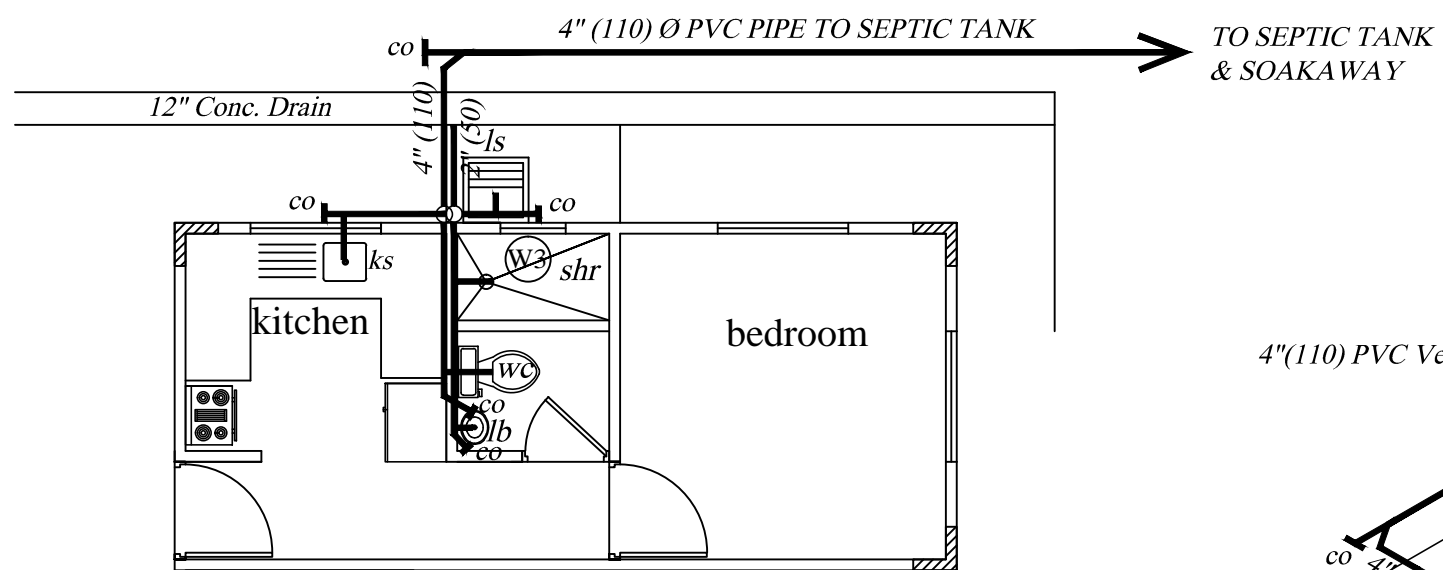
DETAIL 2-2



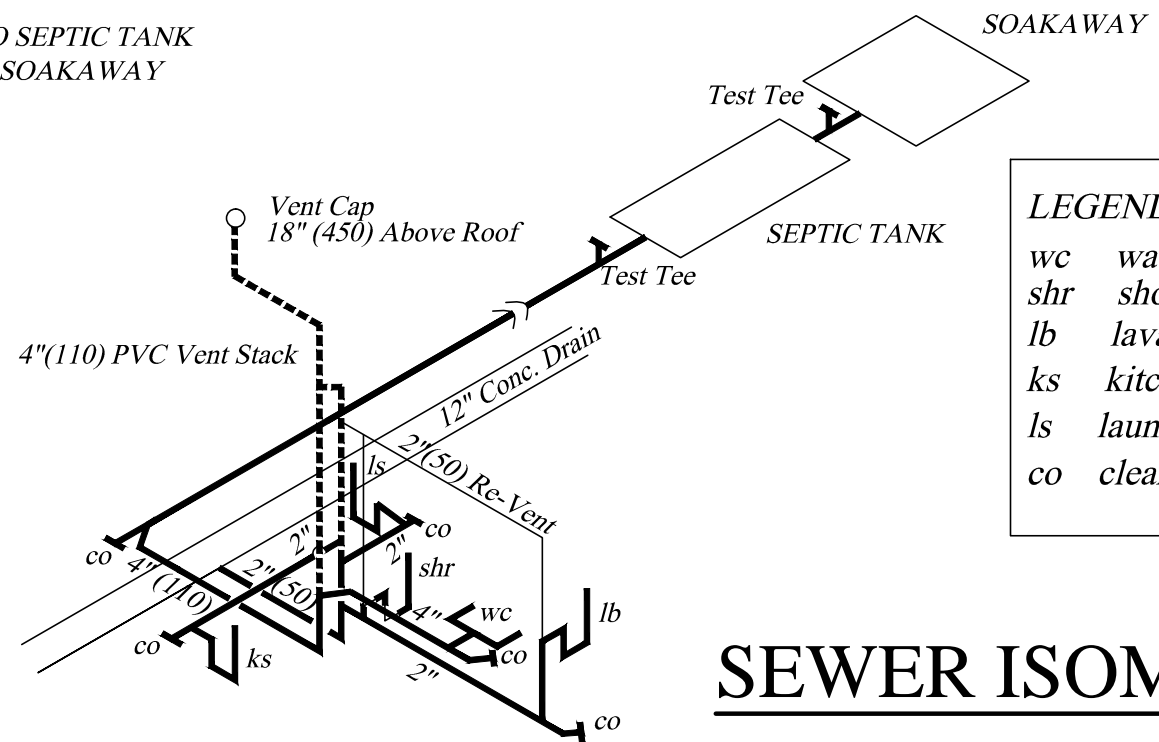
LINTOL DETAIL

TYPICAL DETAILS	No.	Date	Notes	No.	Date	Revisions	Drawn By	Appr. By	CONSULTANTS: A & L ESTATE MANAGEMENT CONSULTANCY LIMITED #6 JADE BOULEVARD, EMPEROR COURT, BON AIR GARDENS, AROUCA TRINIDAD W.I. TEL: 642-4820 OR 681-7587	CLIENT: MINISTRY OF HOUSING LAND AND MARINE AFFAIRS JOB TITLE: NEIGHBOURHOODUPGRADING PROGRAMME STARTER HOUSING UNITS		
	1 BEDROOM FLAT											ENGINEER: FRANCIS ANTOINE

GNC Services
For Architectural Designs & General Draughting
Drawn By: Noreen Christopher Checked By:



SEWER LAYOUT

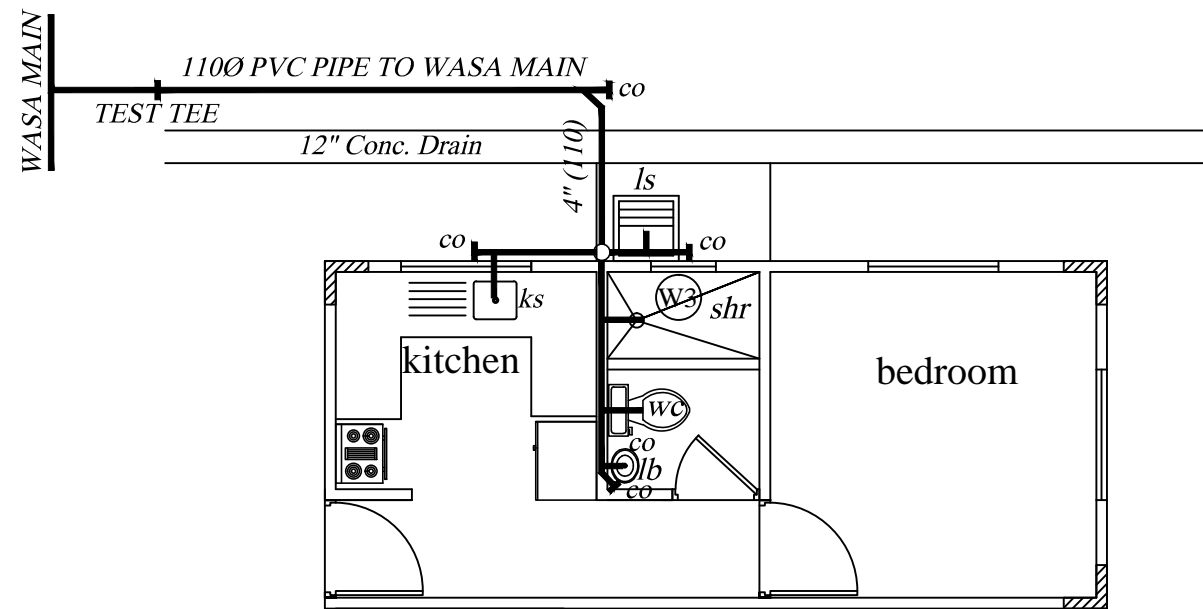


LEGEND

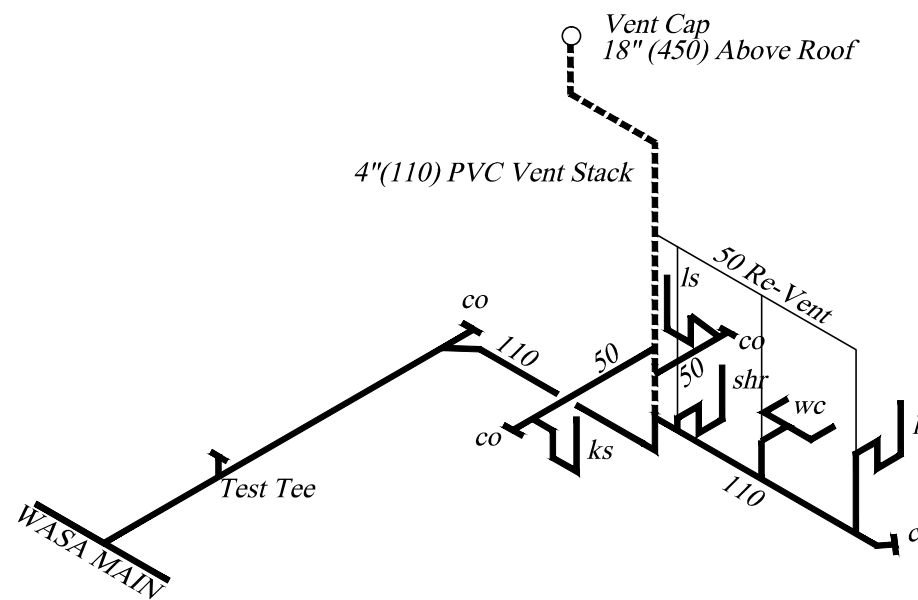
wc water closet
shr shower
lb lavatory basin
ks kitchen sink
ls laundry sink
co clean out

SEWER ISOMETRIC

SEWER LAYOUT & ISOMETRIC (ST)	No.	Date	Notes	No.	Date	Revisions	Drawn By	Appr. By	CONSULTANTS: A & L ESTATE MANAGEMENT CONSULTANCY LIMITED #6 JADE BOULEVARD, EMPEROR COURT, BON AIR GARDENS, AROUCA TRINIDAD W.I. TEL: 642-4820 OR 681-7587	CLIENT: MINISTRY OF HOUSING LAND AND MARINE AFFAIRS	
	1 BEDROOM FLAT										JOB TITLE: NEIGHBOURHOODUPGRADING PROGRAMME STARTER HOUSING UNITS
							GNC Services For Architectural Designs & General Draughting	Certified By: ALSTON FOURNILLIER	DATE: AUGUST 2013	SCALE: 3/8" = 1'-0"	DWG. NO.: 1BF / 06
							Drawn By: Noreen Christopher	Checked By:			



SEWER LAYOUT

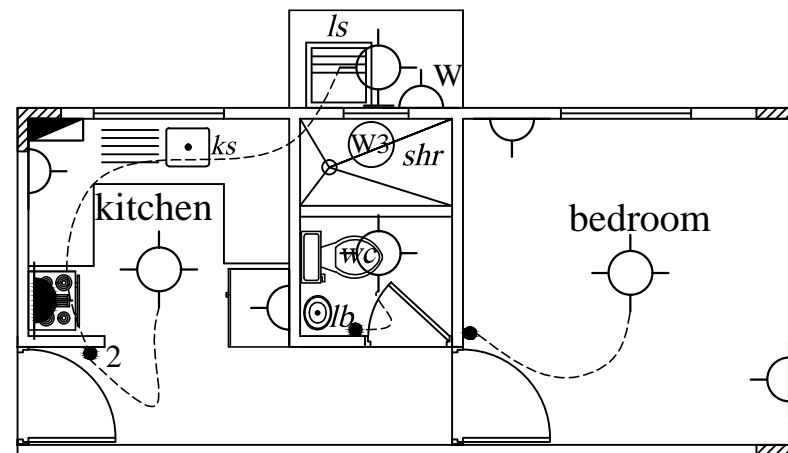


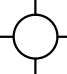
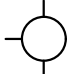
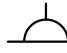
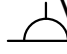




SEWER ISOMETRIC

LEGEND

wc	water closet
shr	shower
lb	lavatory basin
ks	kitchen sink
ls	laundry sink
co	clean out

SEWER LAYOUT & ISOMETRIC	No.	Date	Notes	No.	Date	Revisions	Drawn By	Appr. By	CONSULTANTS: A & L ESTATE MANAGEMENT CONSULTANCY LIMITED #6 JADE BOULEVARD, EMPEROR COURT, BON AIR GARDENS, AROUCA TRINIDAD W.I. TEL: 642-4820 OR 681-7587	CLIENT: MINISTRY OF HOUSING LAND AND MARINE AFFAIRS		
	1 BEDROOM FLAT										JOB TITLE: NEIGHBOURHOOD UPGRADING PROGRAMME STARTER HOUSING UNITS	
							GNC Services For Architectural Designs & General Drafting	Certified By: ALSTON FOURNILLIER		DATE: AUGUST 2013	SCALE: 1:100	DWG. NO.: 1BF / 06A
							Drawn By: Noreen Christopher	Checked By:				



-  CEILING LIGHT
-  WALL LIGHT
-  OUTLET 110V
-  OUTLET 110V (WEATHER PROOF)
-  OUTLET 220V
-  SINGLE SWITCH
-  DOUBLE SWITCH
-  PANEL BOX

ELECTRICAL LAYOUT

ELECTRICAL LAYOUT	No.	Date	Notes	No.	Date	Revisions	Drawn By	Appr. By	CONSULTANTS: A & L ESTATE MANAGEMENT CONSULTANCY LIMITED <small>#6 JADE BOULEVARD, EMPEROR COURT, BON AIR GARDENS, AROUCA TRINIDAD W.I. TEL: 642-4820 OR 681-7587</small>	CLIENT: MINISTRY OF HOUSING LAND AND MARINE AFFAIRS JOB TITLE: NEIGHBOURHOODUPGRADING PROGRAMME STARTER HOUSING UNITS		
	1 BEDROOM FLAT										ENGINEER: FRANCIS ANTOINE	DATE: AUGUST 2013

<small>GNC Services For Architectural Designs & General Drafting</small>	ENGINEER: FRANCIS ANTOINE
Drawn By: Noreen Christopher	Checked By: