

FLOOR PLAN
658.00 S.F.
3 Bedroom Flat - OPT. 2

CROSS SECTION

**FLOOR PLAN AND
 CROSS SECTION**
**3 BEDROOM FLAT
 OPT. 2**

No.	Date	Notes	No.	Date	Revisions	Drawn By	Appr. By

CONSULTANTS:
**A & L ESTATE MANAGEMENT
 CONSULTANCY LIMITED**
 #6 JADE BOULEVARD, EMPEROR COURT,
 BON AIR GARDENS, AROUCA
 TRINIDAD W.I.
 TEL: 642-4820 OR 681-7587

GNC Services
 For Architectural Designs & General Draughting

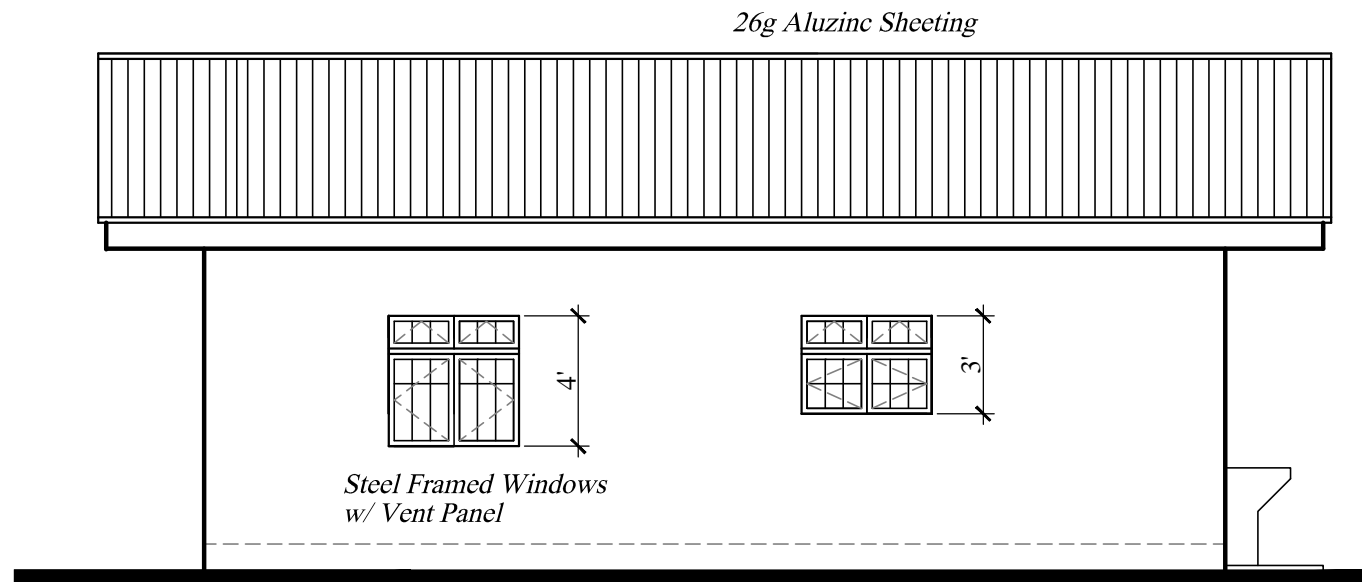
ENGINEER:
FRANCIS ANTOINE

Drawn By: KURT FORDE Checked By: N.C.

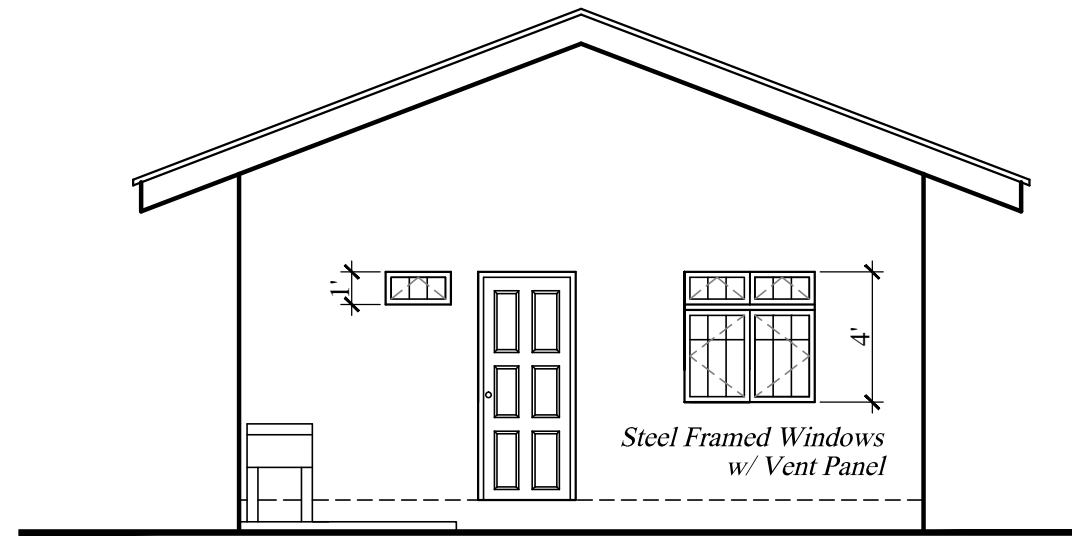
CLIENT:
MINISTRY OF HOUSING LAND AND MARINE AFFAIRS

JOB TITLE:
**NEIGHBOURHOOD UPGRADING PROGRAMME
 STARTER HOUSING UNITS**

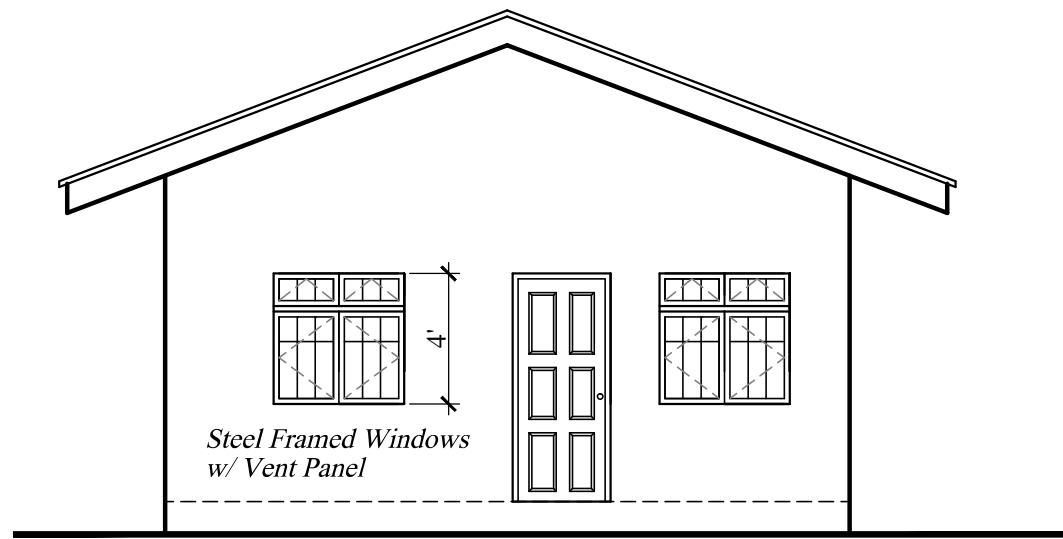
DATE: AUGUST 2013 SCALE: 3/8" = 1'-0" DWG. NO.: **3BF-2 / 01**



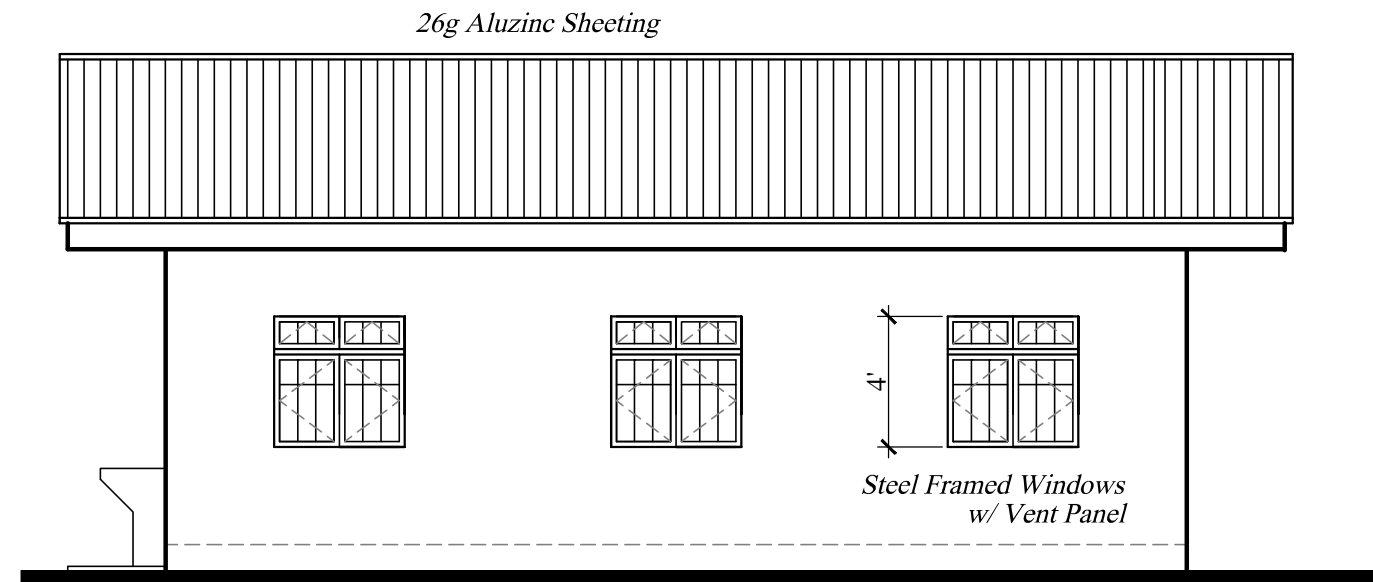
ELEVATION 1



ELEVATION 2

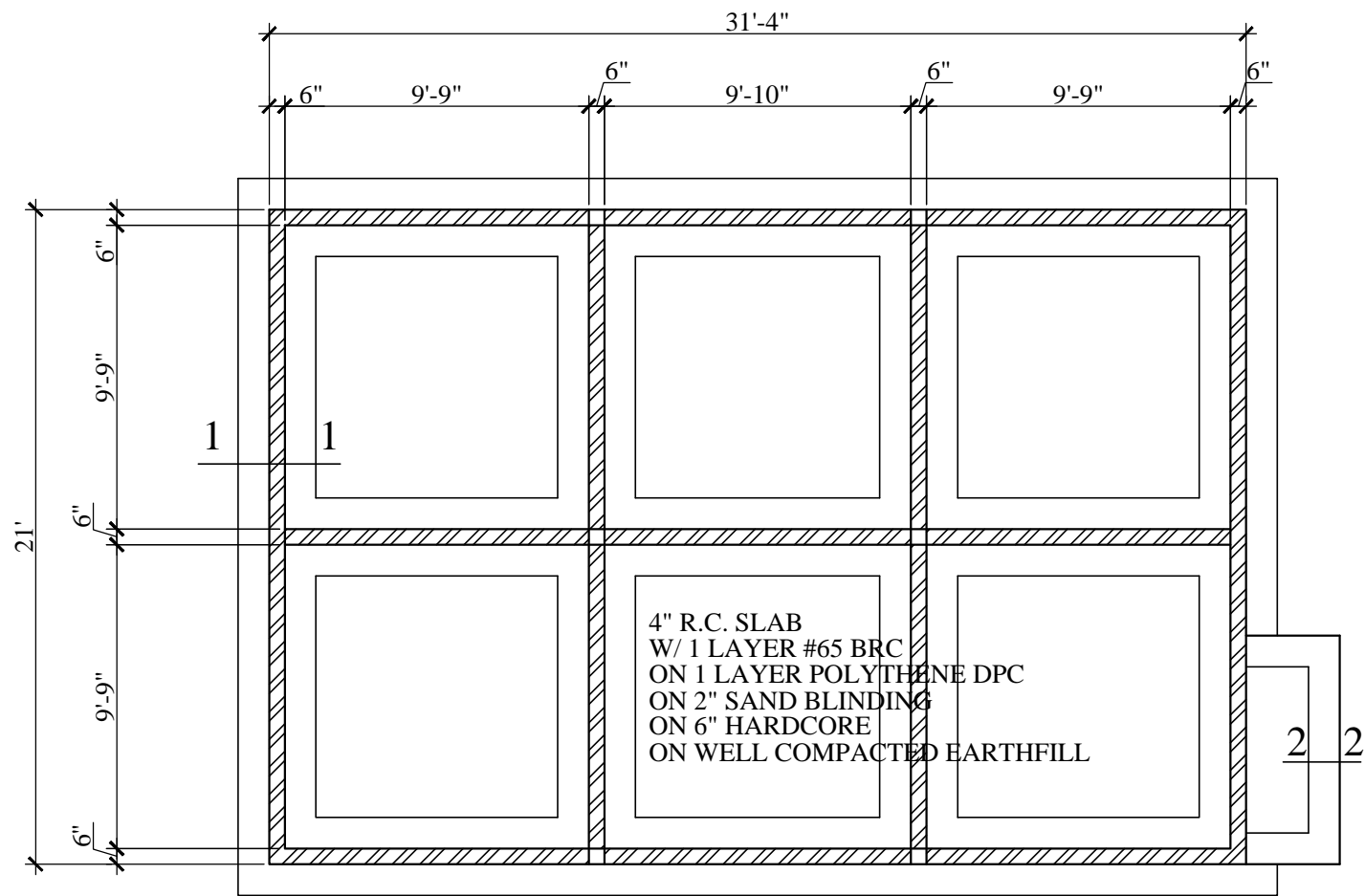


ELEVATION 3

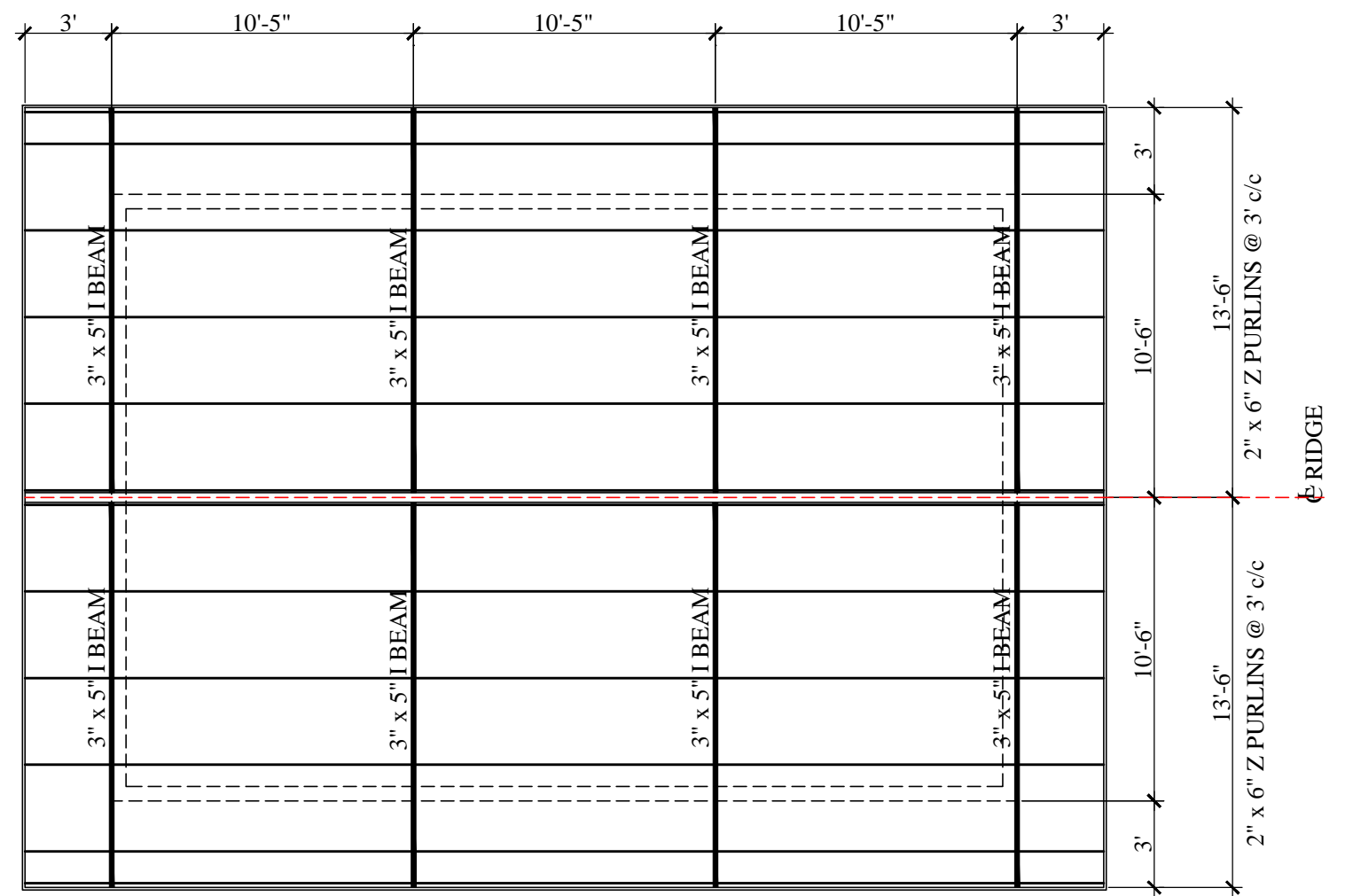


ELEVATION 4

ELEVATIONS	No.	Date	Notes	No.	Date	Revisions	Drawn By	Appr. By	CONSULTANT'S A & L ESTATE MANAGEMENT CONSULTANCY LIMITED #6 JADE BOULEVARD, EMPEROR COURT, BON AIR GARDENS, AROUCA TRINIDAD W.I. TEL: 642-4820 OR 681-7587	CLIENT: MINISTRY OF HOUSING LAND AND MARINE AFFAIRS JOB TITLE: NEIGHBOURHOOD UPGRADING PROGRAMME STARTER HOUSING UNITS	DATE: AUGUST 2013	SCALE: 3/8" = 1'-0"	DWG. NO.: 3BF- 2 / 02
	GNC Services For Architectural Designs & General Drafting		ENGINEER: FRANCIS ANTOINE										
3 BEDROOM FLAT OPT. 2							Drawn By: KURT FORDE	Checked By: N.C.					



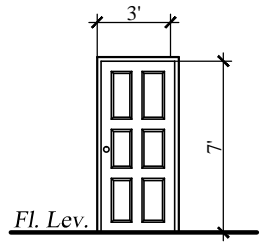
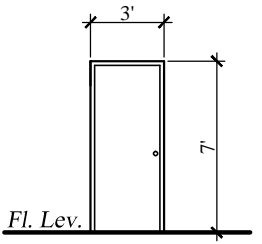
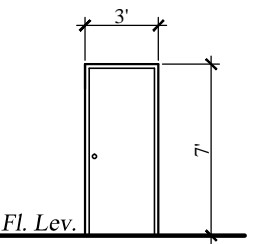
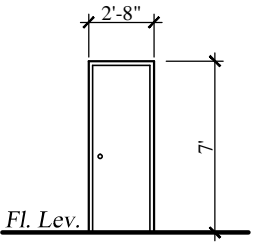
FOUNDATION PLAN



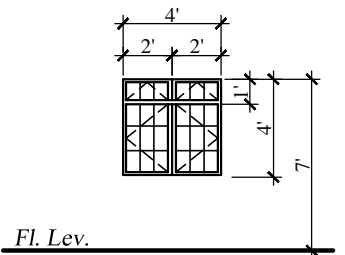
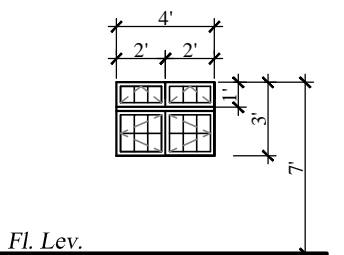
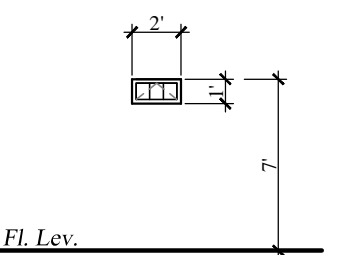
ROOF FRAMING PLAN

FOUNDATION AND ROOF PLANS	No.	Date	Notes	No.	Date	Revisions	Drawn By	Appr. By	CONSULTANTS: A & L ESTATE MANAGEMENT CONSULTANCY LIMITED #6 JADE BOULEVARD, EMPEROR COURT, BON AIR GARDENS, AROUCA TRINIDAD W.I. TEL: 642-4820 OR 681-7587	CLIENT: MINISTRY OF HOUSING LAND AND MARINE AFFAIRS			
	3 BEDROOM FLAT OPT. 2									ENGINEER: FRANCIS ANTOINE	JOB TITLE: NEIGHBOURHOOD UPGRADING PROGRAMME STARTER HOUSING UNITS	DATE: AUGUST 2013	SCALE: 3/8" = 1'-0"
GNC Services For Architectural Designs & General Drafting									Drawn By: Noreen Christopher	Checked By:			

DOOR SCHEDULE

				
DESCRIPTION	(D1)	(D2)	(D3)	(D4)
NO: REQUIRED	1	1	3	1
LOCATION	Entrance - Living & Dining	-	Bedrooms	Bath
REMARKS	Solid Core Panel Door	Solid Flush Door	Semi-Solid Flush Door	Semi-Solid Flush Door

WINDOW SCHEDULE

			
DESCRIPTION	(W1)	(W2)	(W3)
NO: REQUIRED	7	1	1
LOCATION	Living & Dining And Bedrooms	Kitchen	Bath
REMARKS	Steel Framed Windows w/ Burglar Proof Bars	Steel Framed Windows w/ Burglar Proof Bars	Top Hung Steel Framed Window w/ Burglar Proof Bars

DOOR & WINDOW SCHEDULE

3 BEDROOM FLAT OPT. 2

No.	Date	Notes	No.	Date	Revisions	Drawn By	Appr. By

CONSULTANTS:
A & L ESTATE MANAGEMENT CONSULTANCY LIMITED
 #6 JADE BOULEVARD, EMPEROR COURT,
 BON AIR GARDENS, AROUCA
 TRINIDAD W.I.
 TEL: 642-4820 OR 681-7587

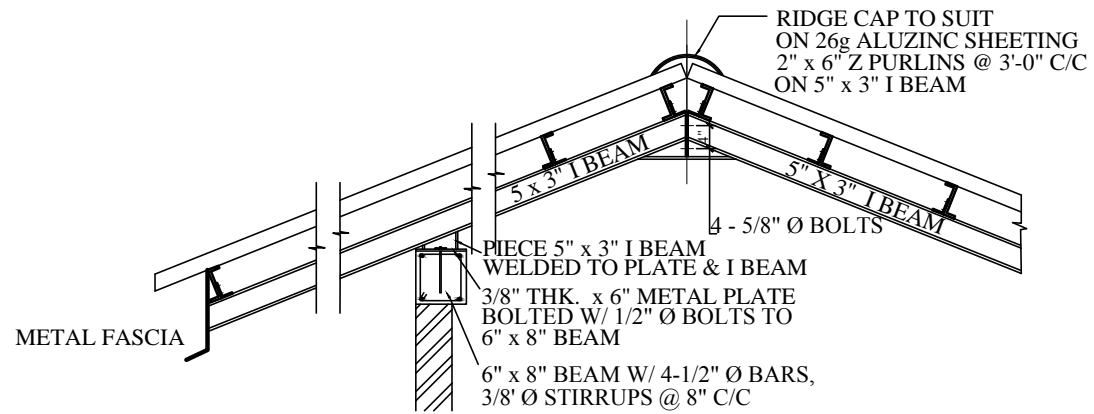
ENGINEER:
 FRANCIS ANTOINE

GNC Services For Architectural Designs & General Draughting
 Drawn By: Noreen Christopher Checked By:

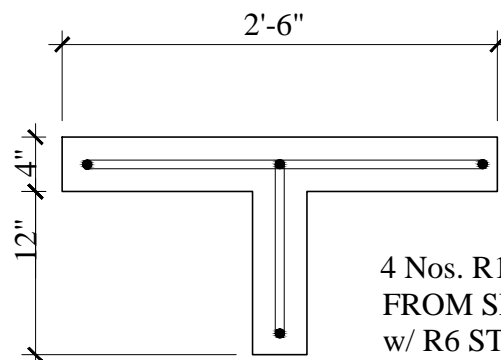
CLIENT:
 MINISTRY OF HOUSING LAND AND MARINE AFFAIRS

JOB TITLE:
 NEIGHBOURHOOD UPGRADING PROGRAMME
 STARTER HOUSING UNITS

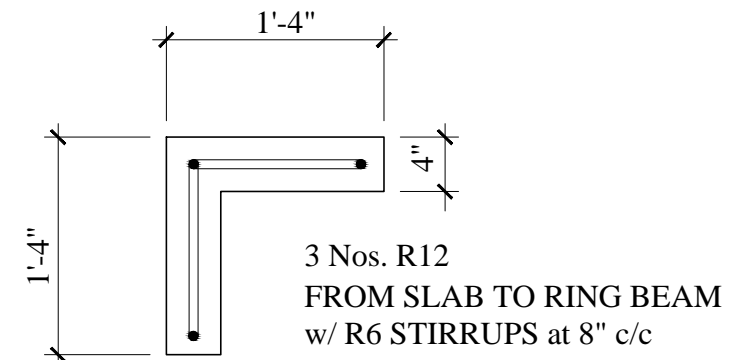
DATE: AUGUST 2013 **SCALE:** 3/8" = 1'-0" **DWG. NO.:** 3BF-2- / 04



ROOF ANCHORAGE DETAIL

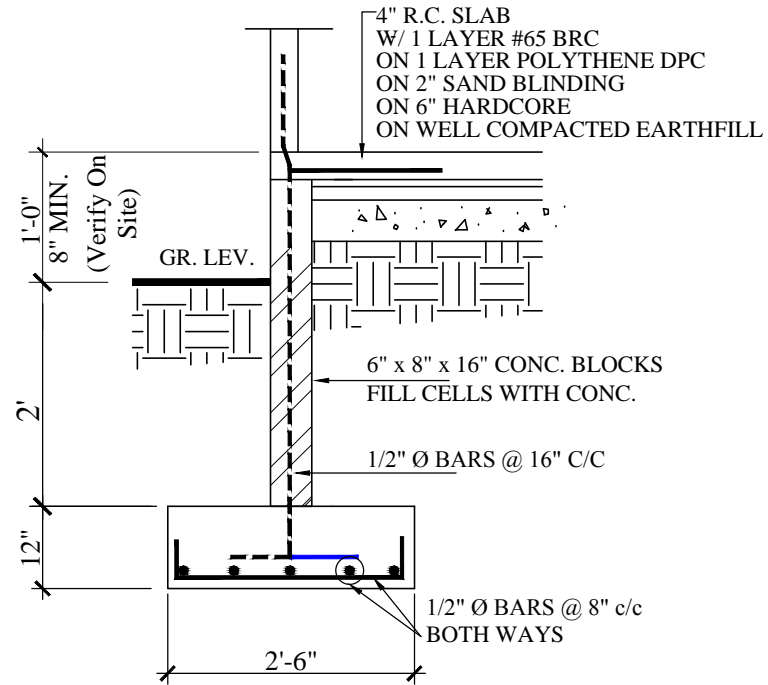


't' junction detail

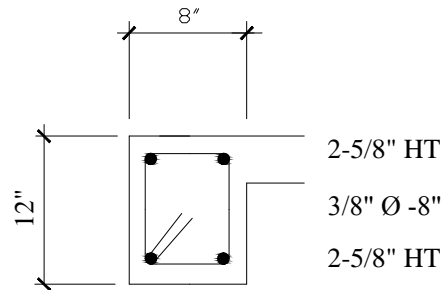


corner detail

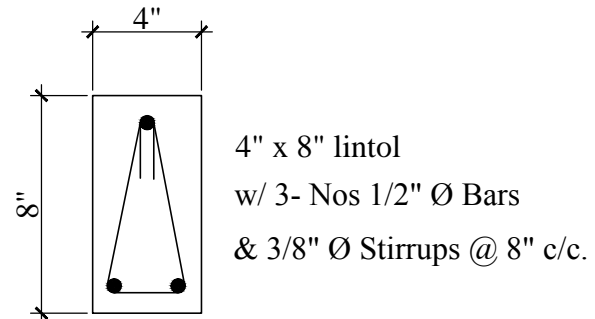
WALL STIFFENERS DETAILS



DETAIL 1-1



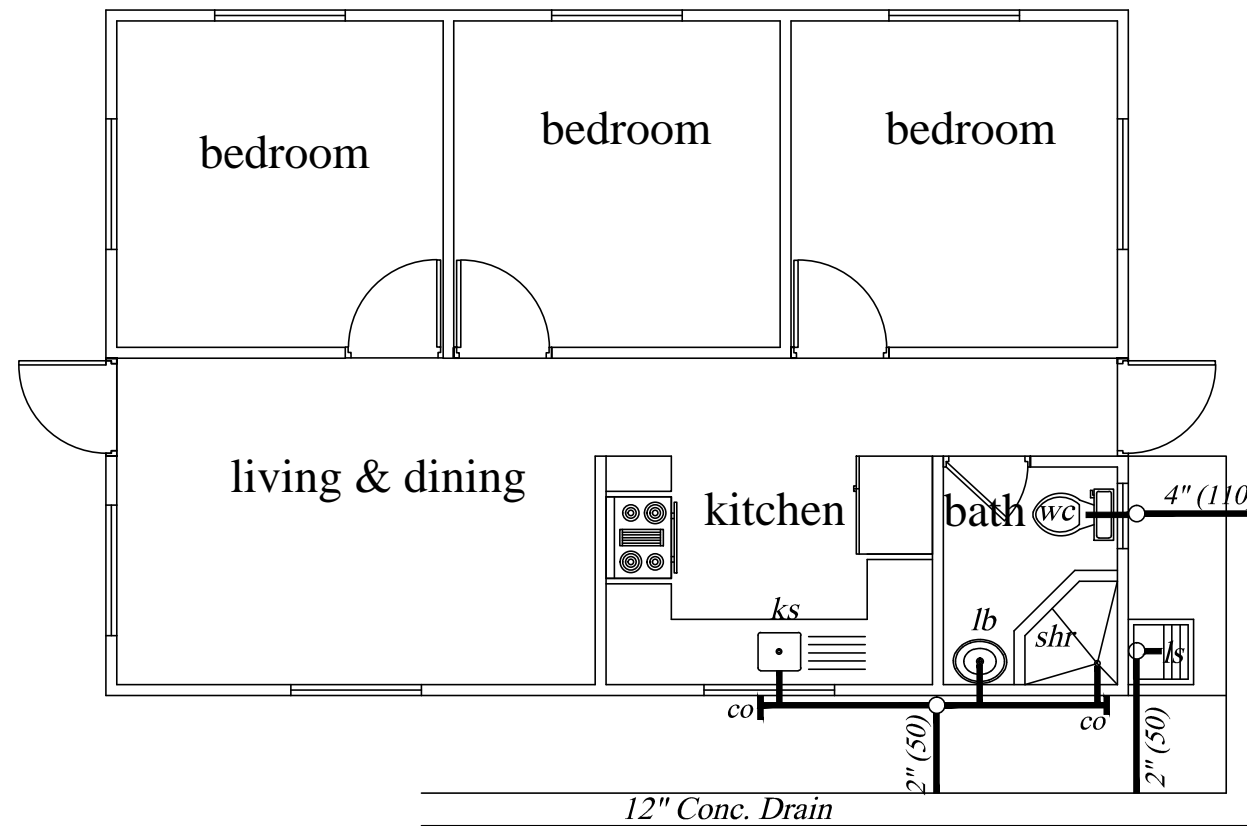
DETAIL 2-2



LINTOL DETAIL

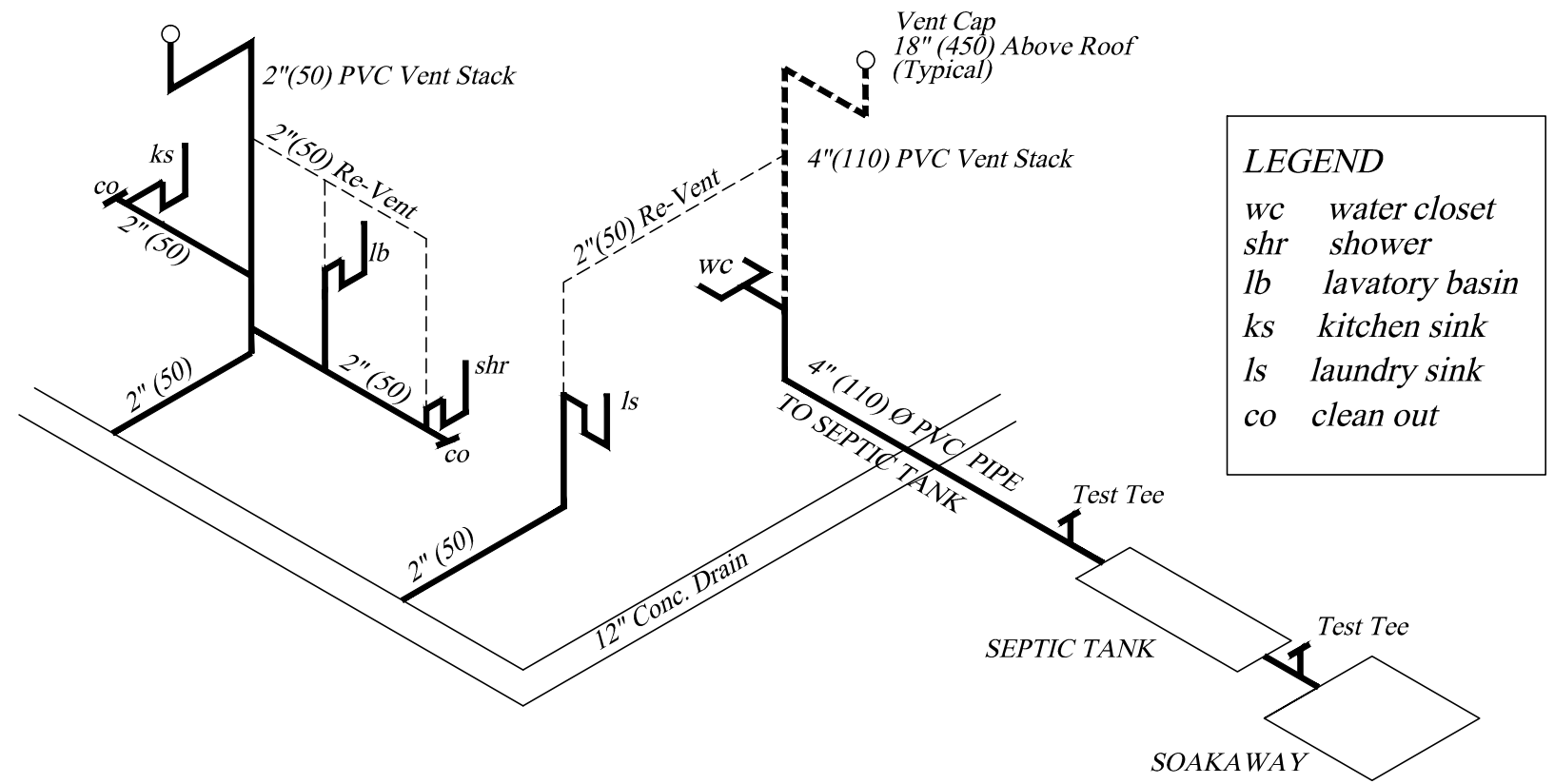
TYPICAL DETAILS	No.	Date	Notes	No.	Date	Revisions	Drawn By	Appr. By	CONSULTANTS: A & L ESTATE MANAGEMENT CONSULTANCY LIMITED #6 JADE BOULEVARD, EMPEROR COURT, BON AIR GARDENS, AROUCA TRINIDAD W.I. TEL: 642-4820 OR 681-7587	CLIENT: MINISTRY OF HOUSING LAND AND MARINE AFFAIRS JOB TITLE: NEIGHBOURHOODUPGRADING PROGRAMME STARTER HOUSING UNITS		
	3 BEDROOM FLAT OPT. 2											ENGINEER: FRANCIS ANTOINE

GNC Services
 For Architectural Designs & General Draughting
 Drawn By: Noreen Christopher | Checked By:



SEWER LAYOUT

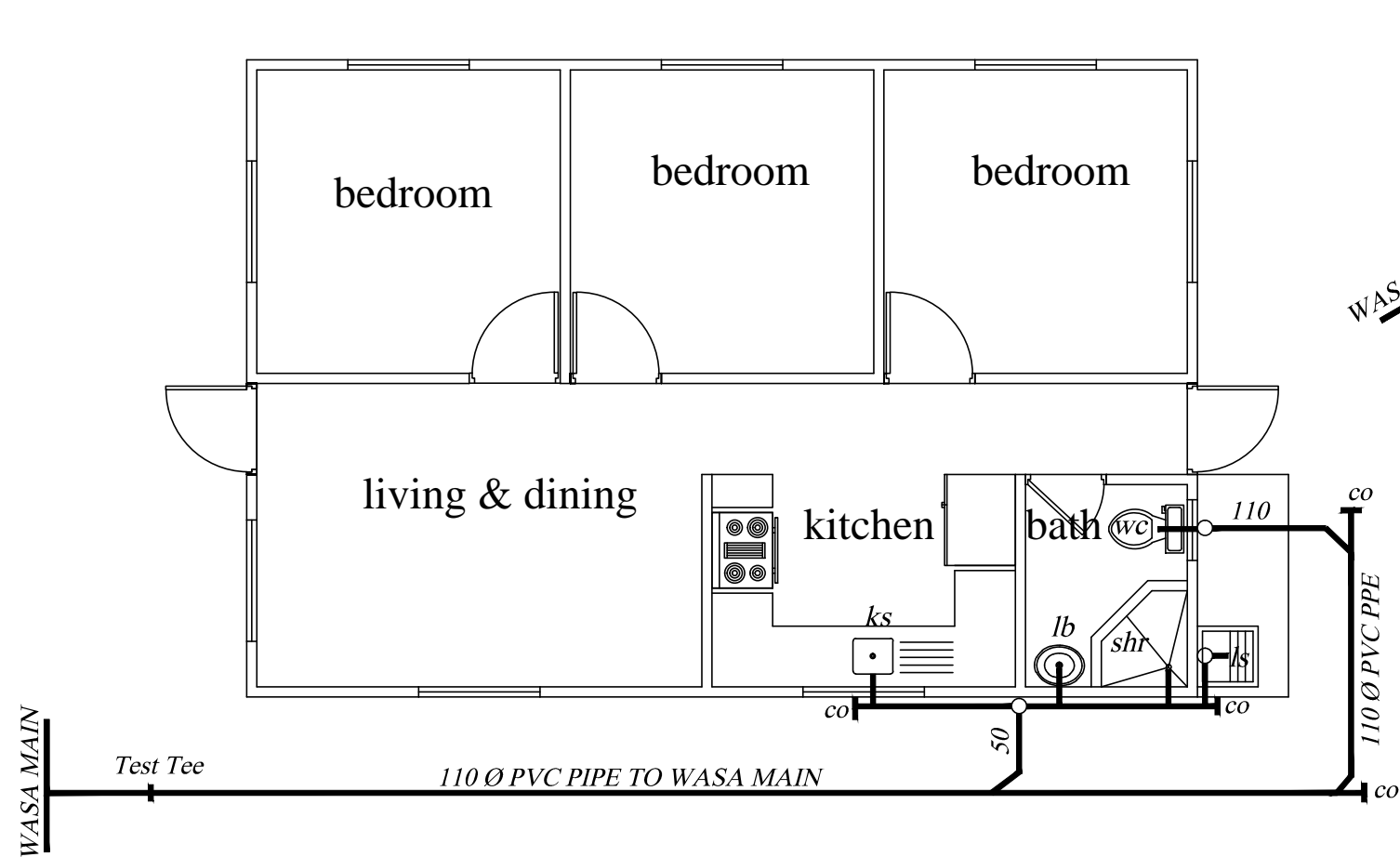
TO SEPTIC TANK & SOAKAWAY



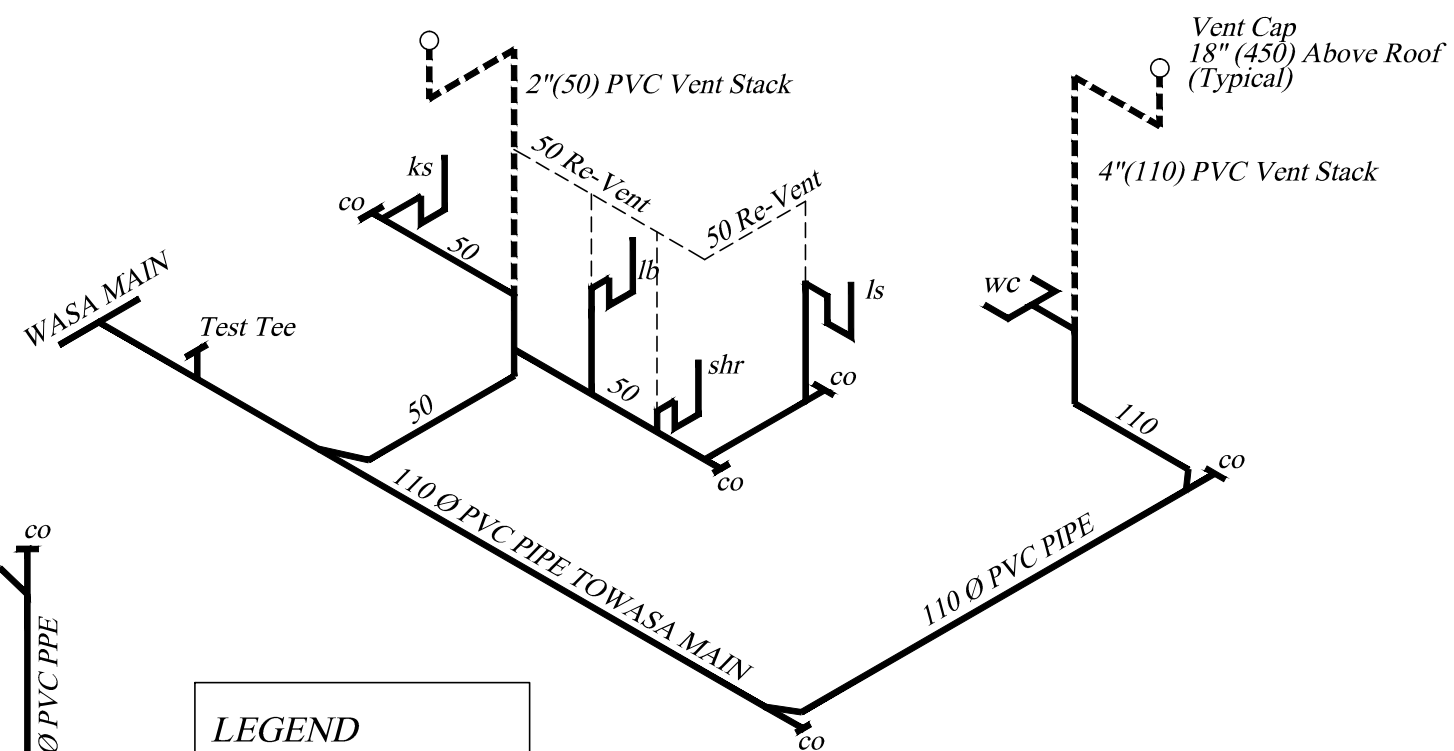
LEGEND	
wc	water closet
shr	shower
lb	lavatory basin
ks	kitchen sink
ls	laundry sink
co	clean out

SEWER ISOMETRIC

SEWER LAYOUT & ISOMETRIC (ST)	No.	Date	Notes	No.	Date	Revisions	Drawn By	Appr. By	CONSULTANTS: A & L ESTATE MANAGEMENT CONSULTANCY LIMITED #6 JADE BOULEVARD, EMPEROR COURT, BON AIR GARDENS, AROUCA TRINIDAD W.I. TEL: 642-4820 OR 681-7587	CLIENT: MINISTRY OF HOUSING LAND AND MARINE AFFAIRS			
	3 BEDROOM FLAT OPT. 2										JOB TITLE: NEIGHBOURHOOD UPGRADING PROGRAMME STARTER HOUSING UNITS		
									GNC Services <i>For Architectural Designs & General Drafting</i>	Certified By: ALSTON FOURNILLIER	DATE: AUGUST 2013	SCALE: 3/8" = 1'-0"	DWG. NO.: 3BF-2 / 06
									Drawn By: Noreen Christopher	Checked By:			



SEWER LAYOUT

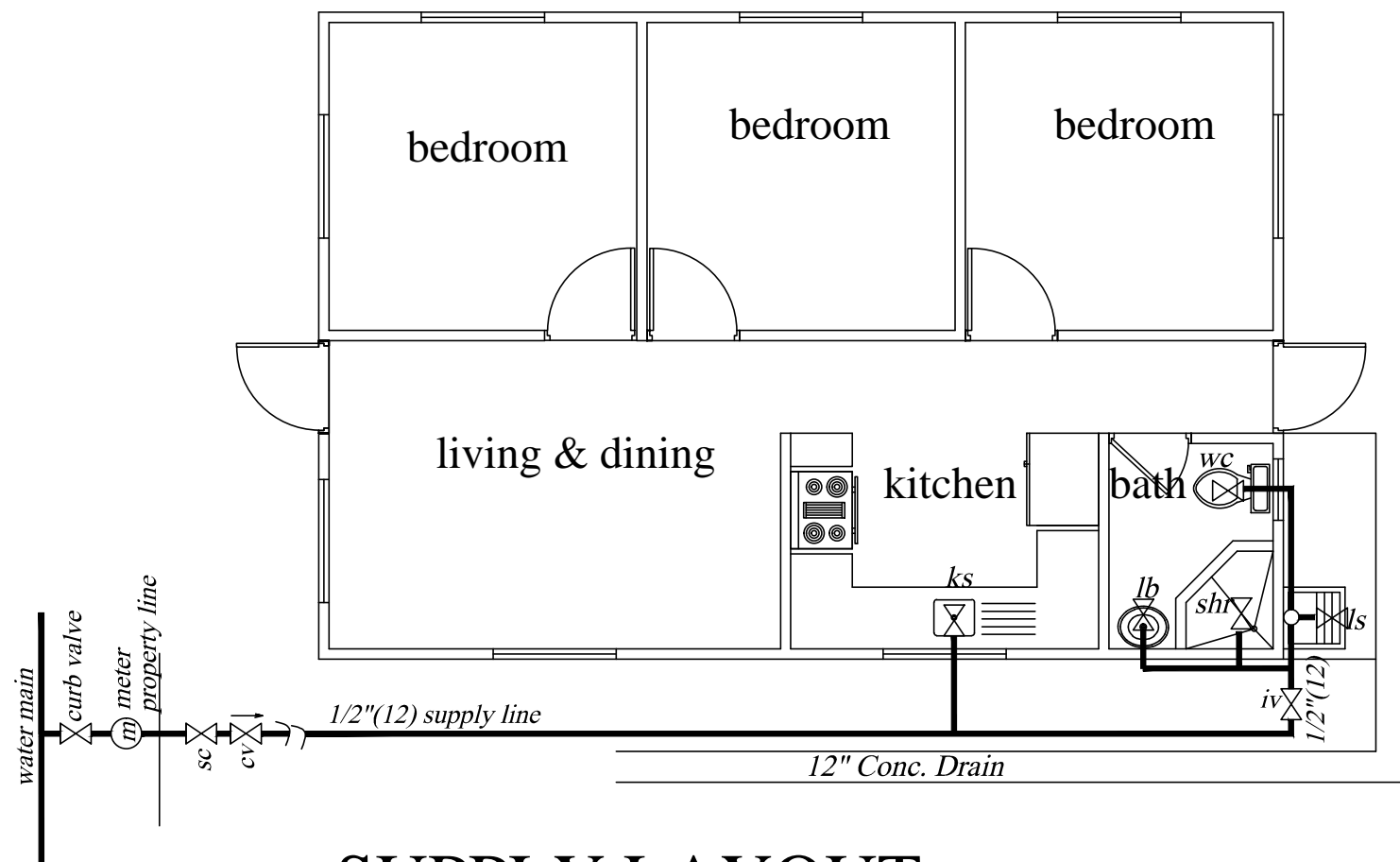


LEGEND

- wc water closet
- shr shower
- lb lavatory basin
- ks kitchen sink
- ls laundry sink
- co clean out

SEWER ISOMETRIC

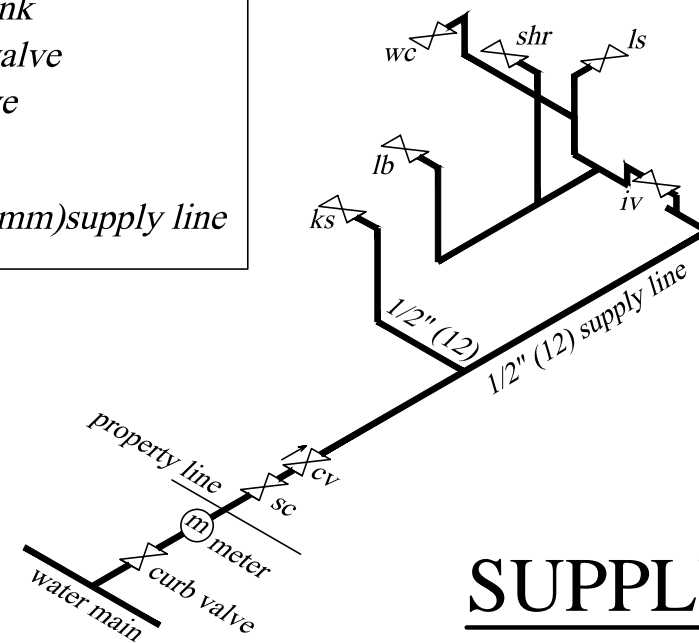
SEWER LAYOUT & ISOMETRIC	No.	Date	Notes	No.	Date	Revisions	Drawn By	Appr. By	CONSULTANTS: A & L ESTATE MANAGEMENT CONSULTANCY LIMITED #6 JADE BOULEVARD, EMPEROR COURT, BON AIR GARDENS, AROUCA TRINIDAD W.I. TEL: 642-4820 OR 681-7587	CLIENT: MINISTRY OF HOUSING LAND AND MARINE AFFAIRS		
	3 BEDROOM FLAT OPT. 2										JOB TITLE: NEIGHBOURHOODUPGRADING PROGRAMME STARTER HOUSING UNITS	
							Drawn By: Noreen Christopher	Checked By:	Certified By: ALSTON FOURNILLIER	DATE: AUGUST 2013	SCALE: 3/8" = 1'-0"	DWG. NO.: 3BF-2 / 06A



SUPPLY LAYOUT

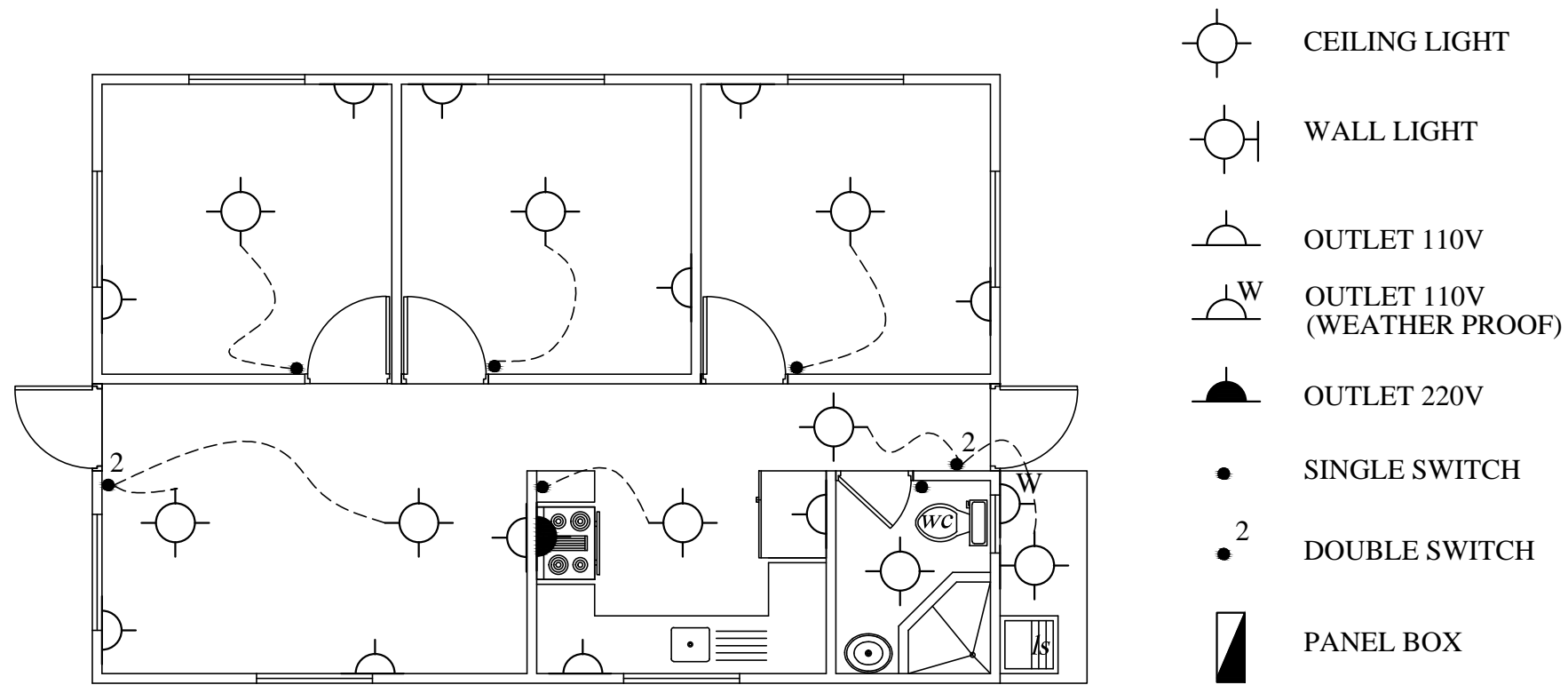
LEGEND

- wc* water closet
- shr* shower
- lb* lavatory basin
- ks* kitchen sink
- ls* laundry sink
- iv* isolation valve
- cv* check valve
- sc* stop cock
- 1/2"(12mm)supply line



SUPPLY ISOMETRIC

SUPPLY LAYOUT & ISOMETRIC 2 BEDROOM FLAT OPT. 2	No.	Date	Notes	No.	Date	Revisions	Drawn By	Appr. By	CONSULTANTS: A & L ESTATE MANAGEMENT CONSULTANCY LIMITED #6 JADE BOULEVARD, EMPEROR COURT, BON AIR GARDENS, AROUCA TRINIDAD W.I. TEL: 642-4820 OR 681-7587	CLIENT: MINISTRY OF HOUSING LAND AND MARINE AFFAIRS	
	JOB TITLE: NEIGHBOURHOODUPGRADING PROGRAMME STARTER HOUSING UNITS		DATE: AUGUST 2013		SCALE: 3/8" = 1'-0"		DWG. NO.: 3BF-2 / 07				
GNC Services <i>For Architectural Designs & General Draughting</i>		Certified By: ALSTON FOURNILLIER		Drawn By: Noreen Christopher		Checked By:					



ELECTRICAL LAYOUT

ELECTRICAL LAYOUT	No.	Date	Notes	No.	Date	Revisions	Drawn By	Appr. By	CONSULTANTS: A & L ESTATE MANAGEMENT CONSULTANCY LIMITED #6 JADE BOULEVARD, EMPEROR COURT, BON AIR GARDENS, AROUCA TRINIDAD W.I. TEL: 642-4820 OR 681-7587		CLIENT: MINISTRY OF HOUSING LAND AND MARINE AFFAIRS JOB TITLE: NEIGHBOURHOODUPGRADING PROGRAMME STARTER HOUSING UNITS		
	3 BEDROOM FLAT OPT. 2									ENGINEER: FRANCIS ANTOINE	DATE: AUGUST 2013	SCALE: 3/8" = 1'-0"	DWG. NO.: 3BF-2 / 08