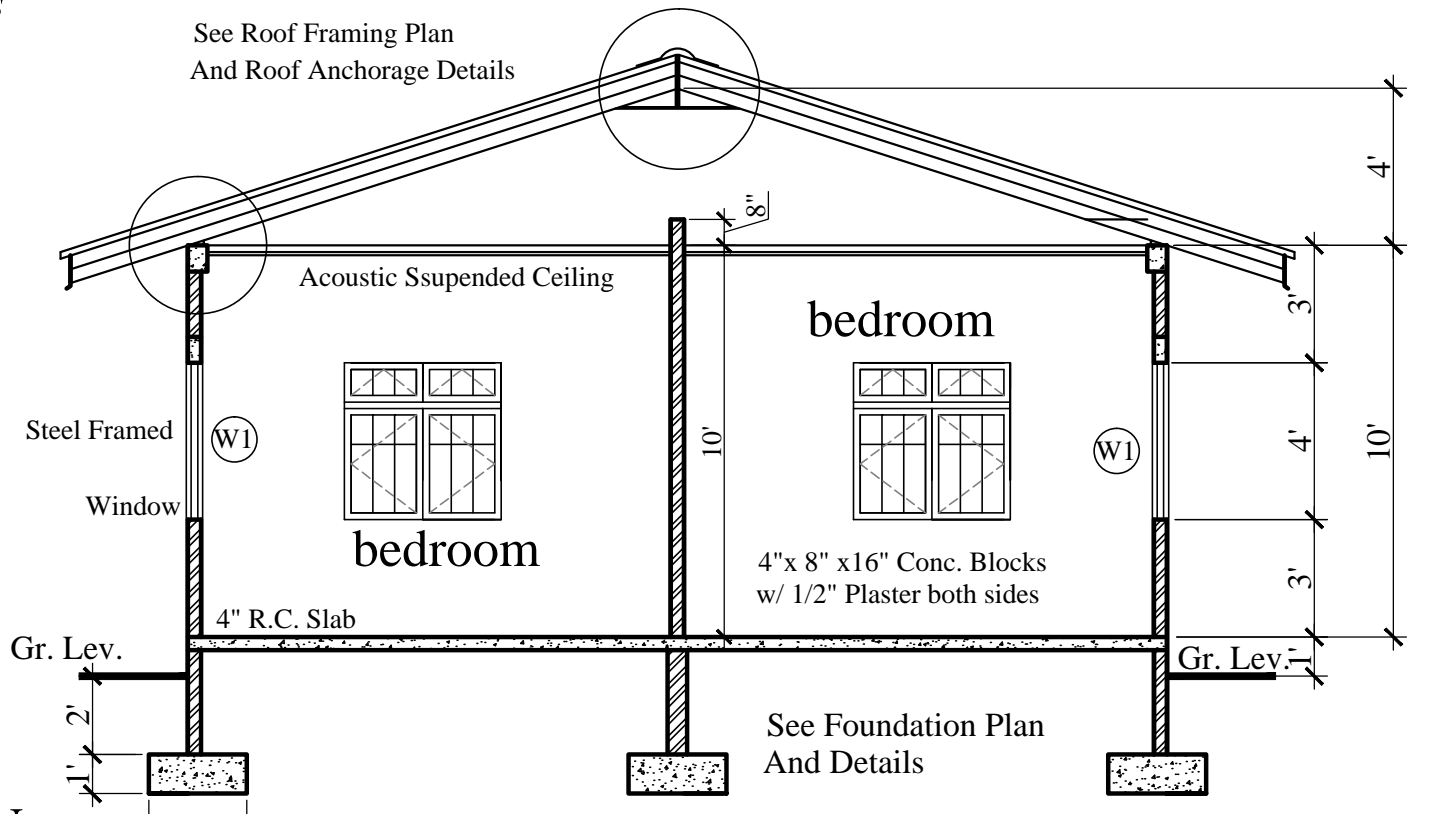
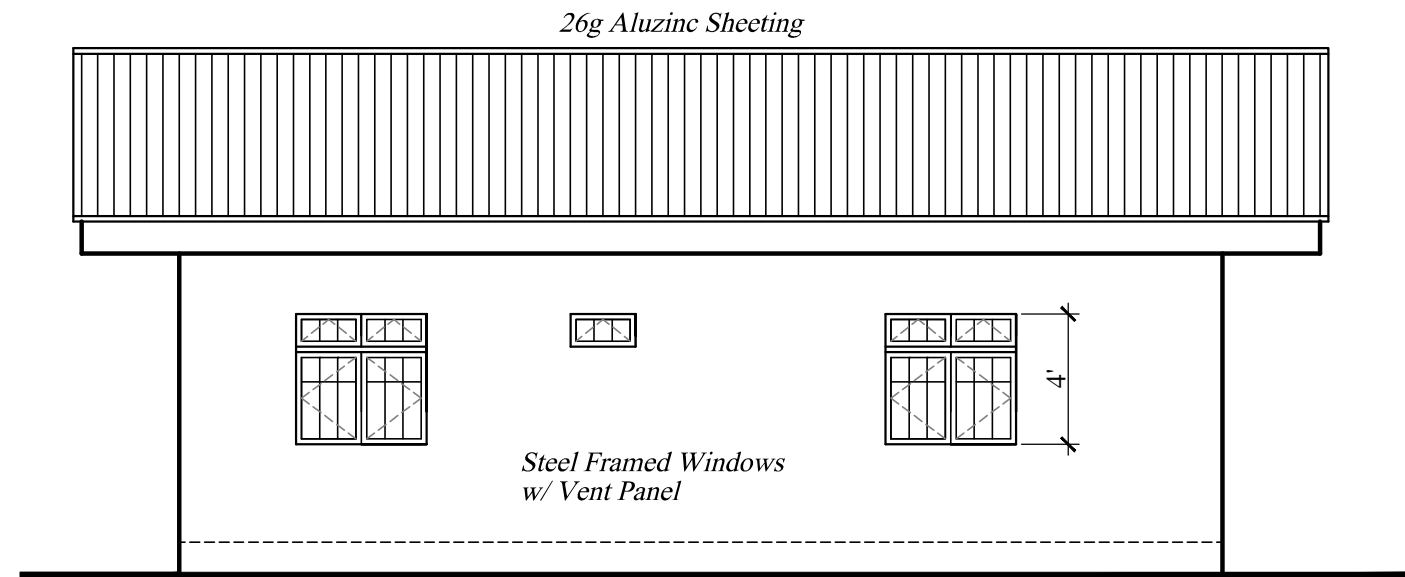


FLOOR PLAN
672.00 S.F.
3 Bedroom Flat - Opt. 1

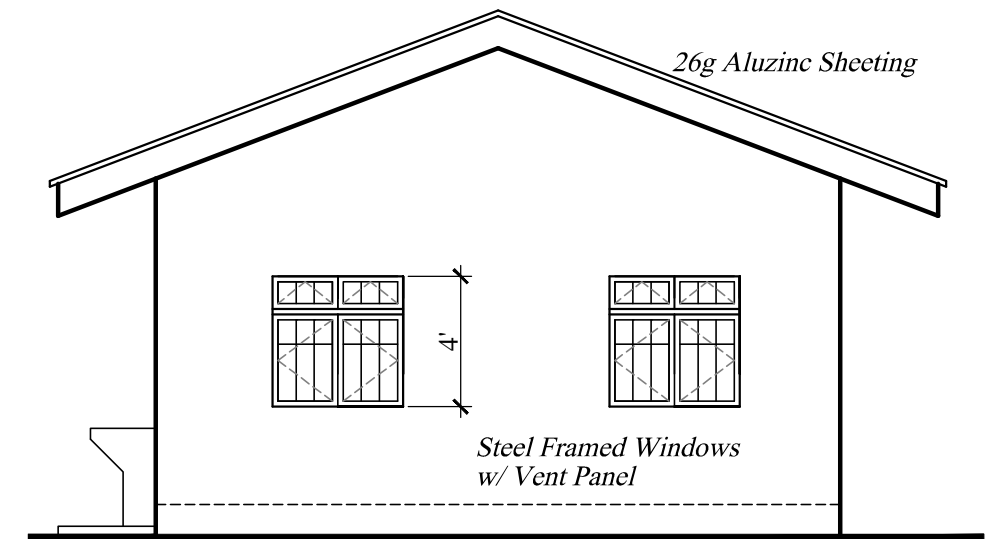


CROSS SECTION

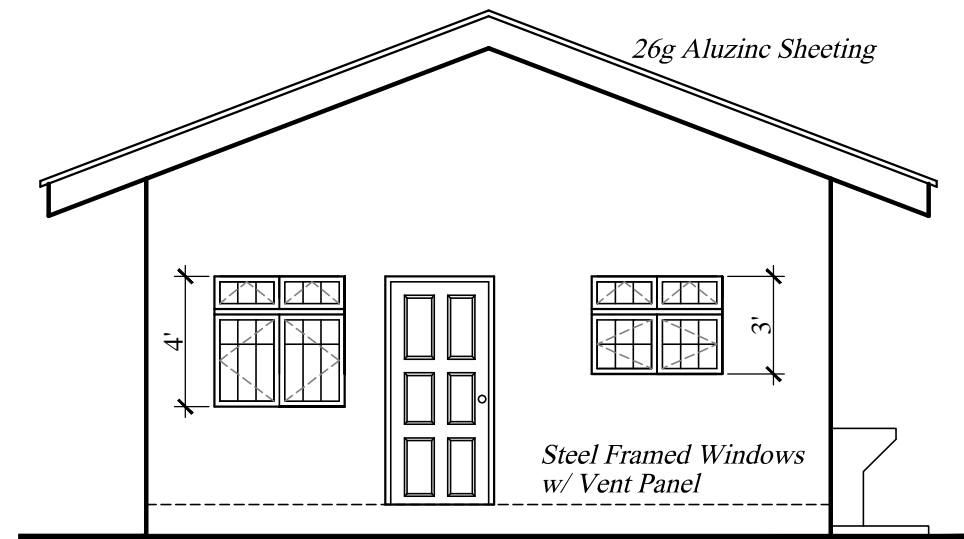
FLOOR PLAN AND CROSS SECTION 3 BEDROOM FLAT OPT. 1	No.	Date	Notes	No.	Date	Revisions	Drawn By	Appr. By	CONSULTANTS: A & L ESTATE MANAGEMENT CONSULTANCY LIMITED #6 JADE BOULEVARD, EMPEROR COURT, BON AIR GARDENS, AROUCA TRINIDAD W.I. TEL: 642-4820 OR 681-7587	CLIENT: MINISTRY OF HOUSING LAND AND MARINE AFFAIRS JOB TITLE: NEIGHBOURHOODUPGRADING PROGRAMME STARTER HOUSING UNITS	
									GNC Services <i>For Architectural Designs & General Draughting</i> Drawn By: Noreen Christopher Checked By:	ENGINEER: FRANCIS ANTOINE DATE: AUGUST 2013	SCALE: 3/8" = 1'-0"



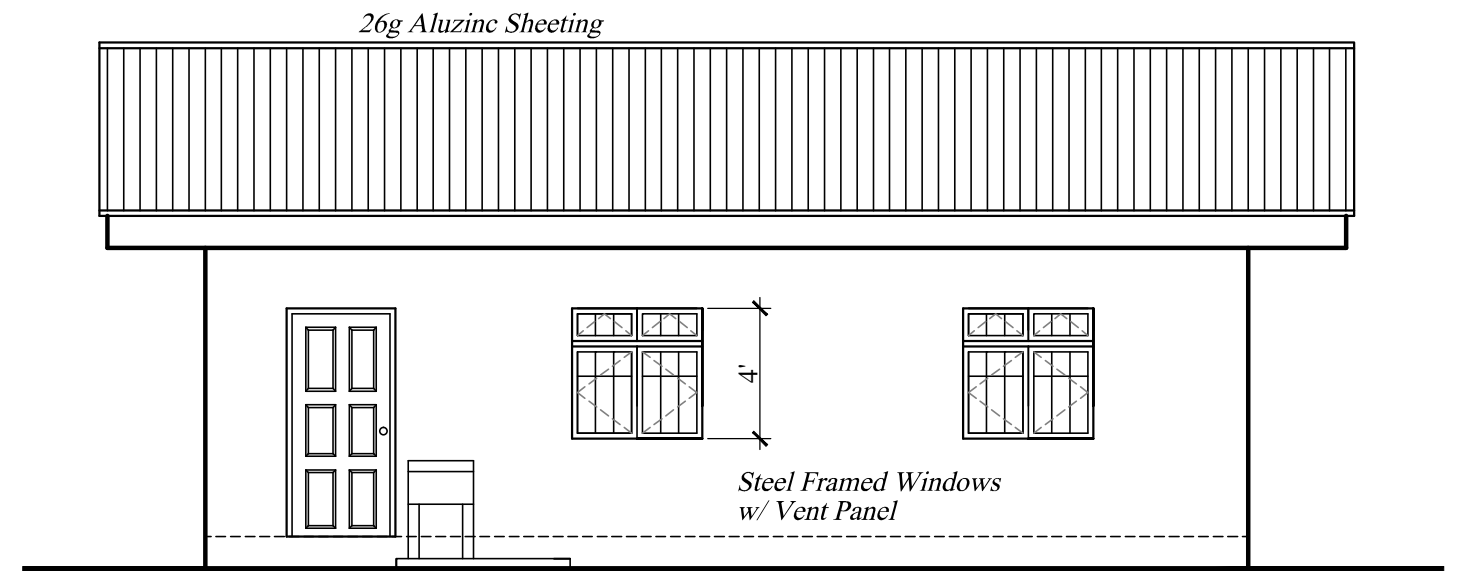
ELEVATION 3



ELEVATION 2

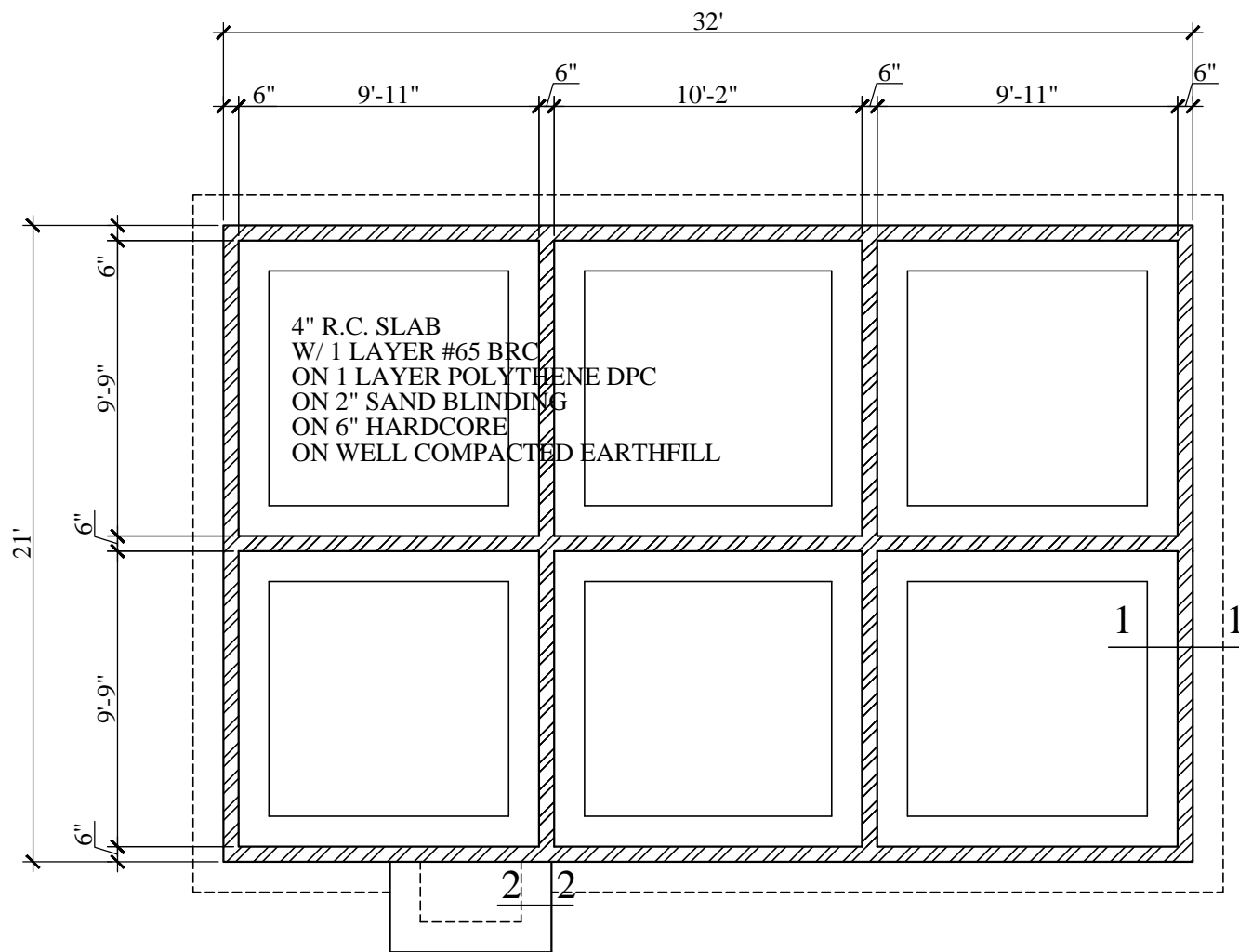


ELEVATION 4

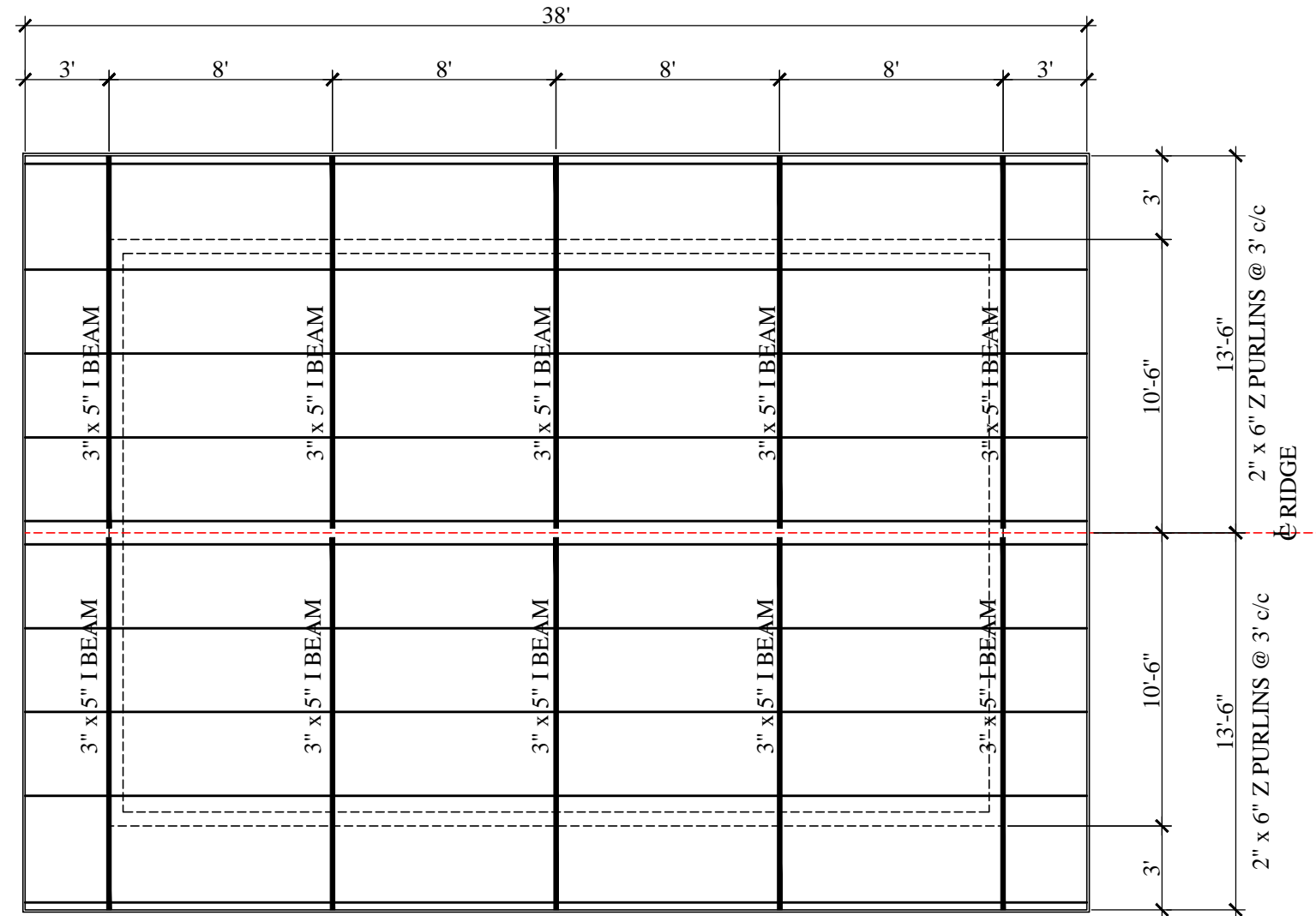


ELEVATION 1

ELEVATIONS	No.	Date	Notes	No.	Date	Revisions	Drawn By	Appr. By	CONSULTANTS: A & L ESTATE MANAGEMENT CONSULTANCY LIMITED #6 JADE BOULEVARD, EMPEROR COURT, BON AIR GARDENS, AROUCA TRINIDAD W.I. TEL: 642-4820 OR 681-7587	CLIENT: MINISTRY OF HOUSING LAND AND MARINE AFFAIRS			
	3 BEDROOM FLAT OPT. 1									JOB TITLE: NEIGHBOURHOOD UPGRADING PROGRAMME STARTER HOUSING UNITS			
GNC Services For Architectural Designs & General Drafting Drawn By: KURT FORDE Checked By: N.C.									ENGINEER: FRANCIS ANTOINE		DATE: AUGUST 2013	SCALE: 3/8" = 1'-0"	DWG. NO.: 3BF-1 / 02



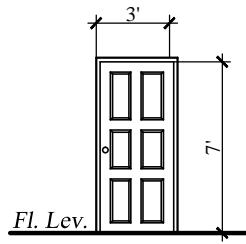
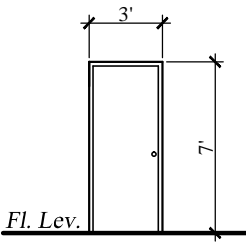
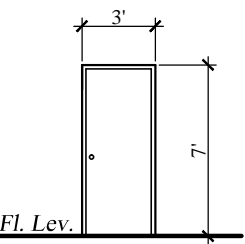
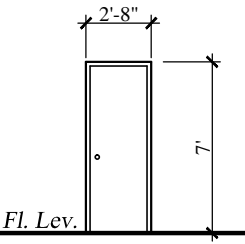
FOUNDATION PLAN



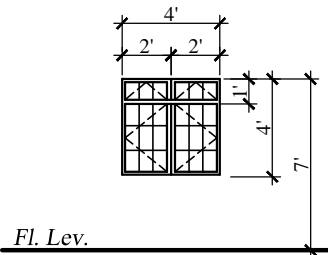
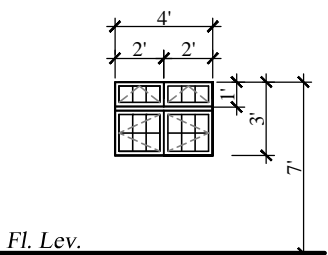
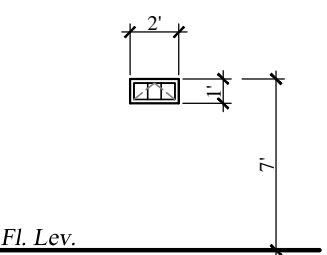
ROOF FRAMING PLAN

FOUNDATION AND ROOF FRAMING PLAN	No.	Date	Notes	No.	Date	Revisions	Drawn By	Appr. By	CONSULTANTS: A & L ESTATE MANAGEMENT CONSULTANCY LIMITED #6 JADE BOULEVARD, EMPEROR COURT, BON AIR GARDENS, AROUCA TRINIDAD W.I. TEL: 642-4820 OR 681-7587	CLIENT: MINISTRY OF HOUSING LAND AND MARINE AFFAIRS		
	3 BEDROOM FLAT OPT. 1										JOB TITLE: NEIGHBOURHOOD UPGRADING PROGRAMME STARTER HOUSING UNITS	DATE: AUGUST 2013
									GNC Services For Architectural Designs & General Drafting	ENGINEER: FRANCIS ANTOINE		
									Drawn By: Noreen Christopher	Checked By:		

DOOR SCHEDULE

				
DESCRIPTION	(D1)	(D2)	(D3)	(D4)
NO: REQUIRED	1	1	3	1
LOCATION	Entrance - Livivg & Dining	Kitchen	Bedrooms	Bath
REMARKS	Solid Core Panel Door	Solid Flush Door	Semi-Solid Flush Door	Semi-Solid Flush Door

WINDOW SCHEDULE

			
DESCRIPTION	(W1)	(W2)	(W3)
NO: REQUIRED	7	1	1
LOCATION	Living & Dining And Bedrooms	Kitchen	Bath
REMARKS	Steel Framed Windows w/ Burglar Proof Bars	Steel Framed Windows w/ Burglar Proof Bars	Top Hung Steel Framed Window w/ Burglar Proof Bars

DOOR & WINDOW SCHEDULE

3 BEDROOM FLAT OPT. 1

No.	Date	Notes	No.	Date	Revisions	Drawn By	Appr. By

CONSULTANTS:
A & L ESTATE MANAGEMENT CONSULTANCY LIMITED
 #6 JADE BOULEVARD, EMPEROR COURT,
 BON AIR GARDENS, AROUCA
 TRINIDAD W.I.
 TEL: 642-4820 OR 681-7587

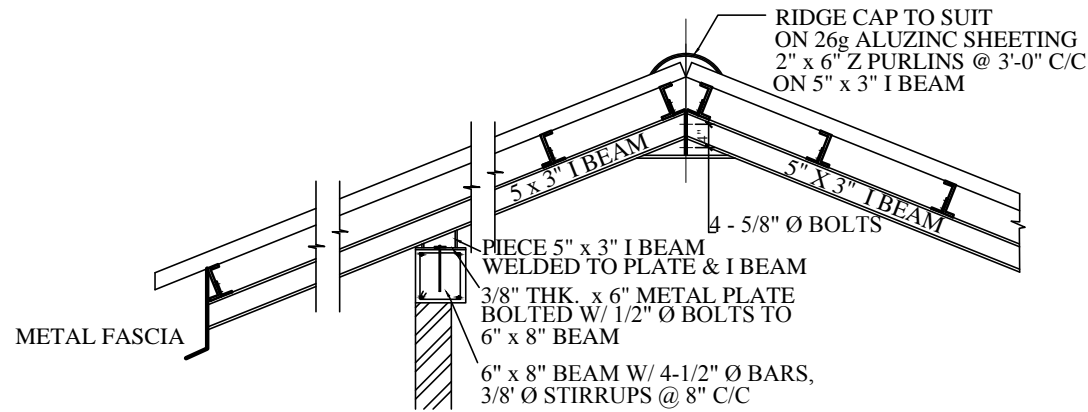
ENGINEER:
 FRANCIS ANTOINE

GNC Services
 For Architectural Designs & General Draughting
 Drawn By: Noreen Christopher Checked By:

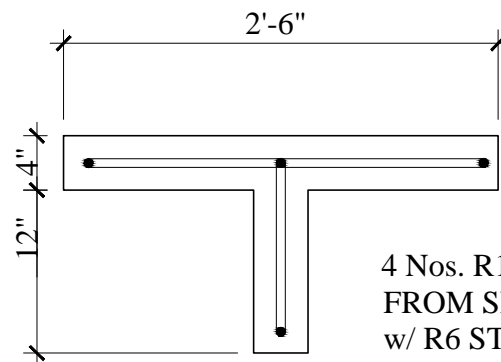
CLIENT:
 MINISTRY OF HOUSING LAND AND MARINE AFFAIRS

JOB TITLE:
 NEIGHBOURHOODUPGRADING PROGRAMME
 STARTER HOUSING UNITS

DATE: AUGUST 2013 **SCALE:** 3/8" = 1'-0" **DWG. NO.:** 3BF-1 / 04

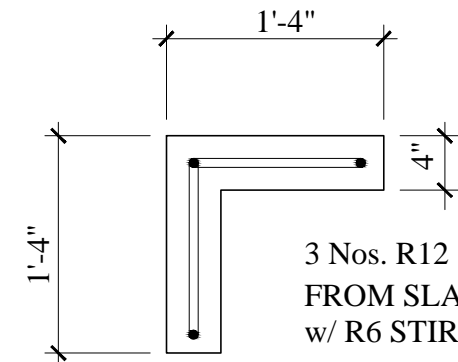


ROOF ANCHORAGE DETAIL



't' junction detail

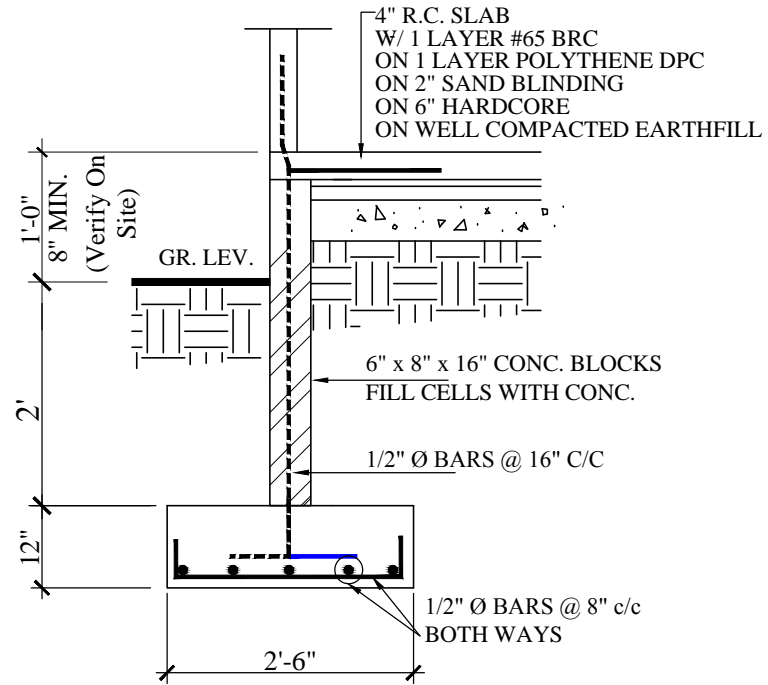
4 Nos. R12
FROM SLAB TO RING BEAM
w/ R6 STIRRUPS at 8" c/c



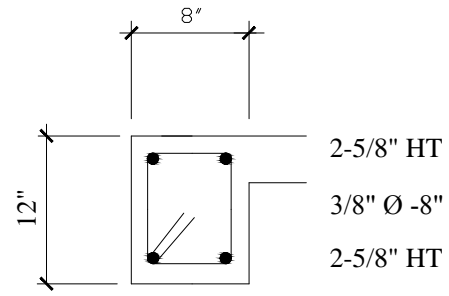
corner detail

3 Nos. R12
FROM SLAB TO RING BEAM
w/ R6 STIRRUPS at 8" c/c

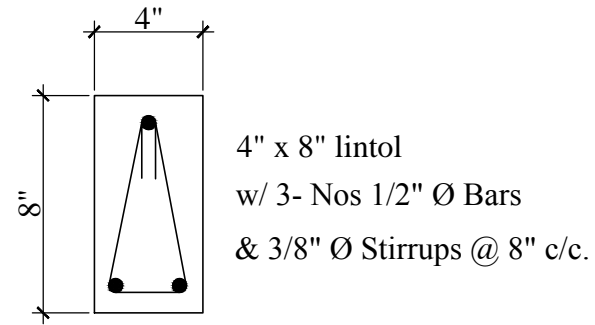
WALL STIFFENERS DETAILS



DETAIL 1-1

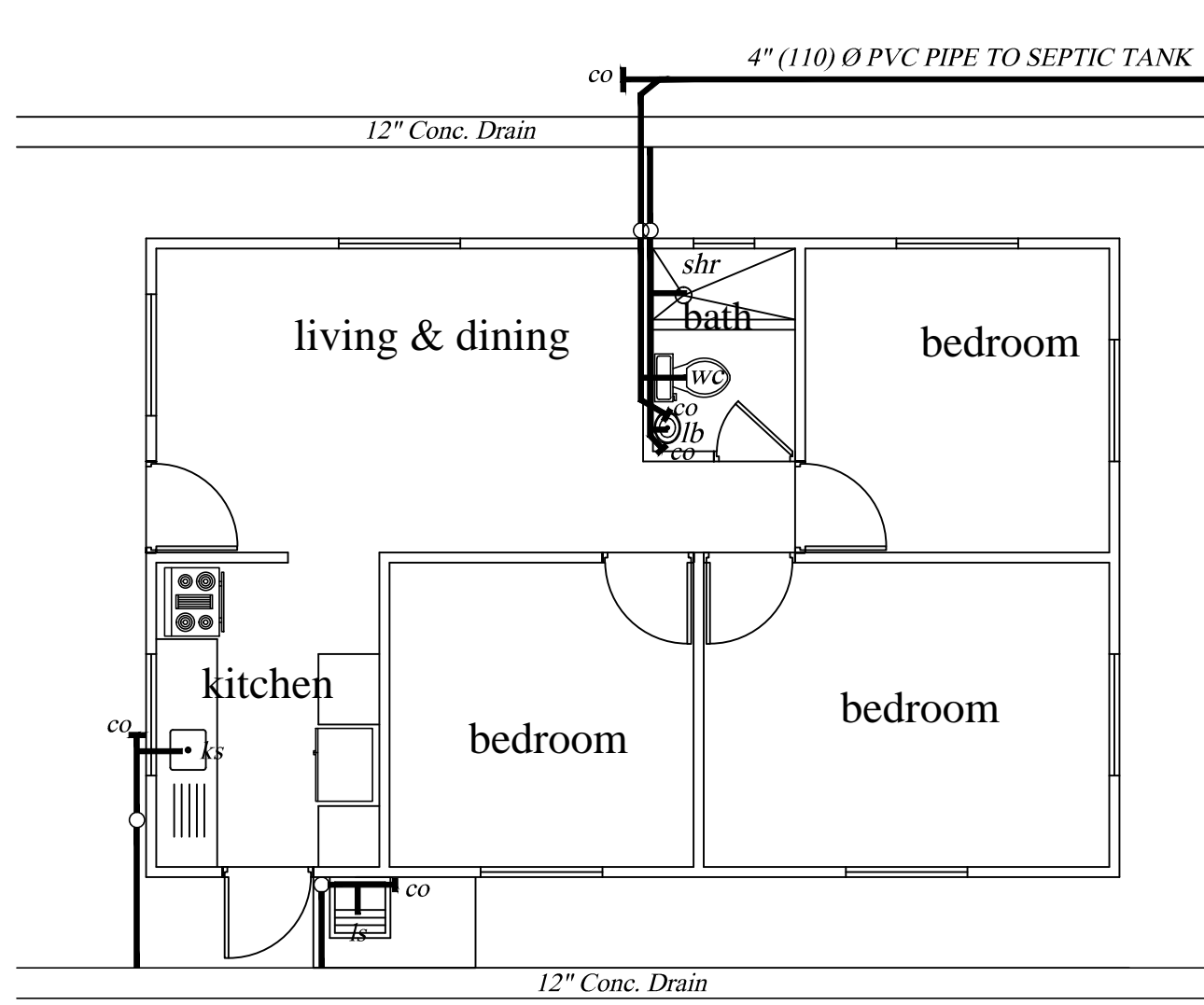


DETAIL 2-2

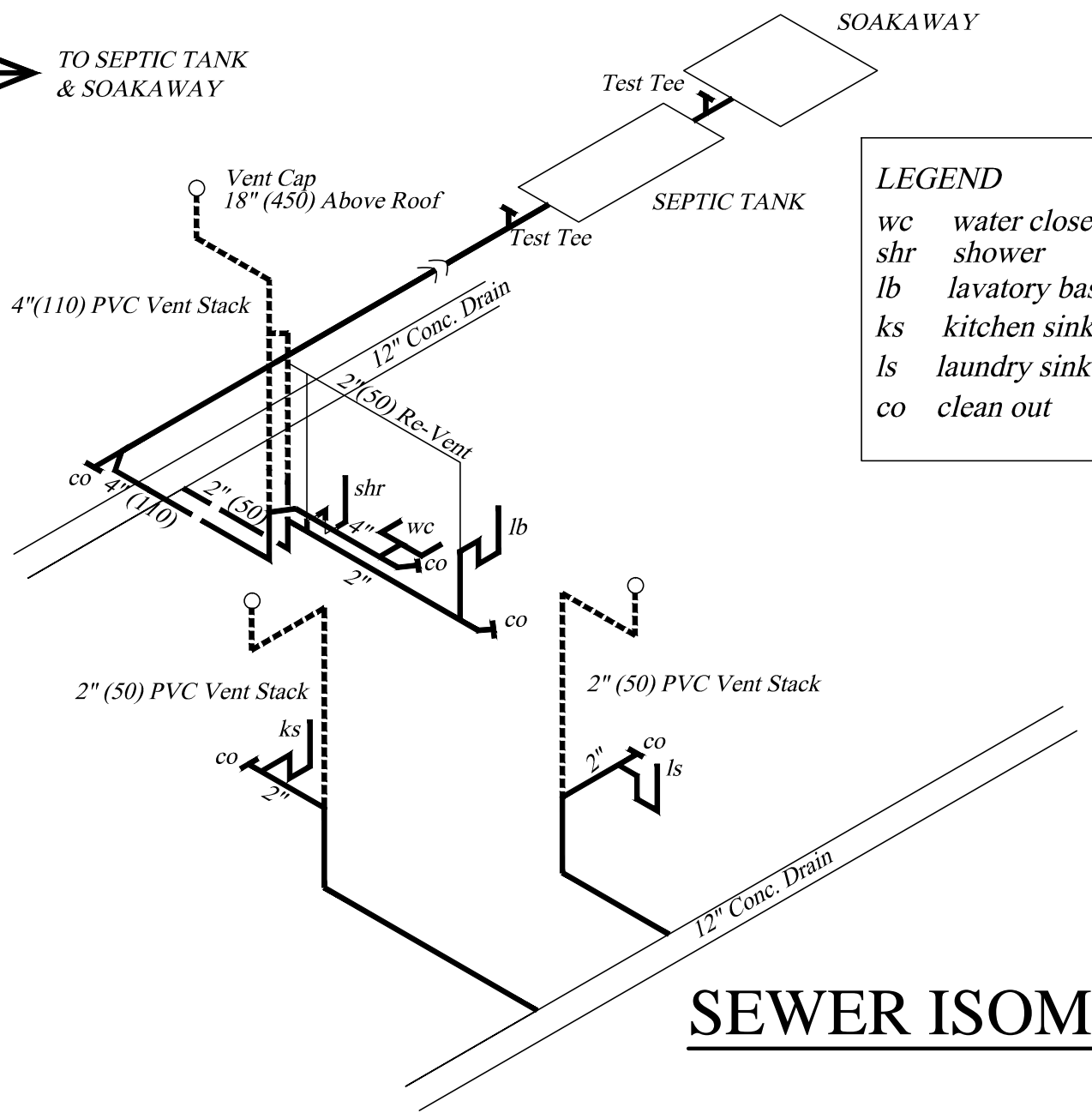


LINTOL DETAIL

TYPICAL DETAILS	No.	Date	Notes	No.	Date	Revisions	Drawn By	Appr. By	CONSULTANTS: A & L ESTATE MANAGEMENT CONSULTANCY LIMITED #6 JADE BOULEVARD, EMPEROR COURT, BON AIR GARDENS, AROUCA TRINIDAD W.I. TEL: 642-4820 OR 681-7587	CLIENT: MINISTRY OF HOUSING LAND AND MARINE AFFAIRS		
	3 BEDROOM FLAT OPT.1									JOB TITLE: NEIGHBOURHOODUPGRADING PROGRAMME STARTER HOUSING UNITS		
							GNC Services For Architectural Designs & General Draughting		ENGINEER: FRANCIS ANTOINE	DATE: AUGUST 2013	SCALE: 3/8" = 1'-0"	DWG. NO.: 3BF-1 /05
							Drawn By: Noreen Christopher		Checked By:			



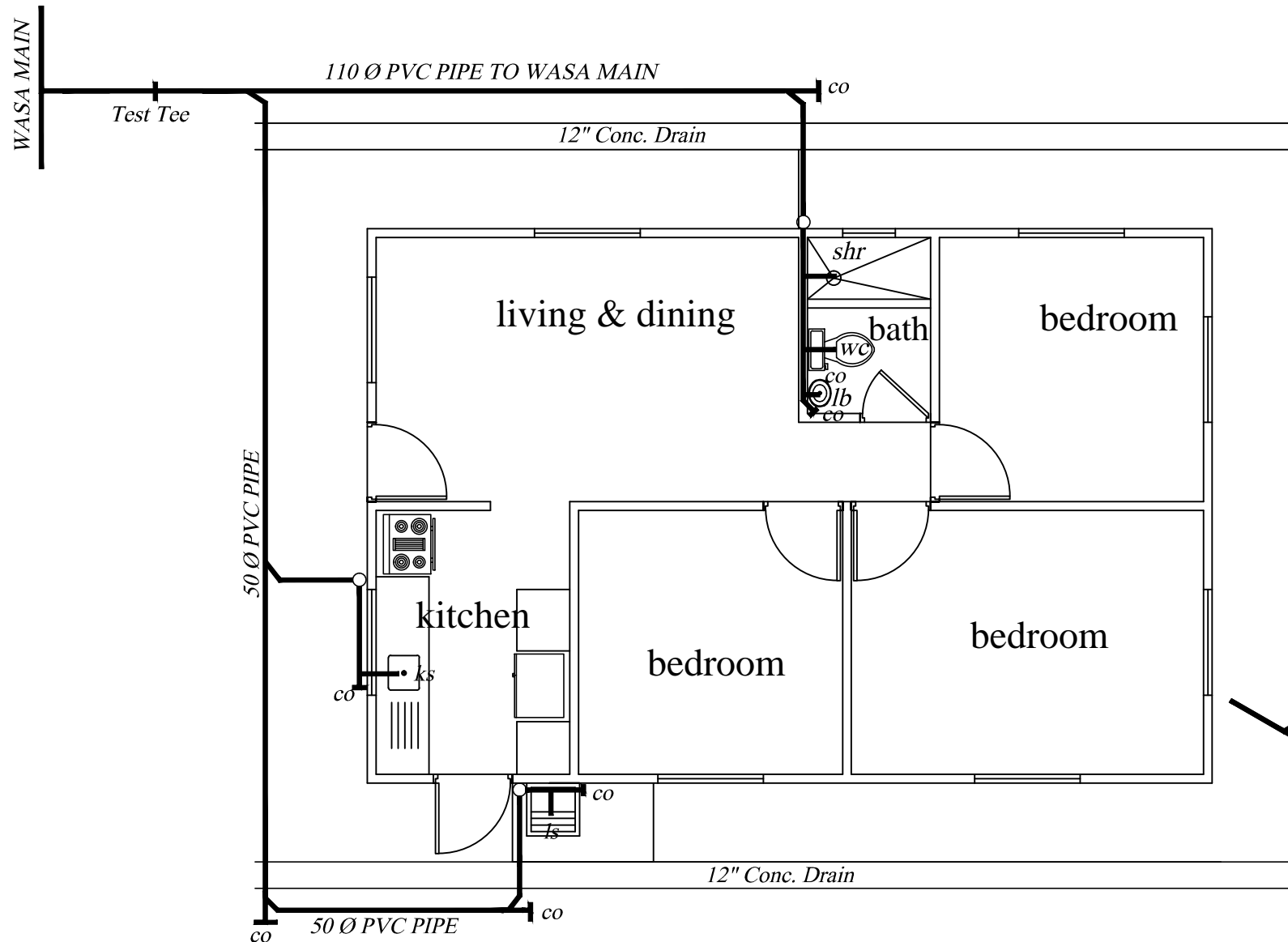
SEWER LAYOUT



LEGEND
 wc water closet
 shr shower
 lb lavatory basin
 ks kitchen sink
 ls laundry sink
 co clean out

SEWER ISOMETRIC

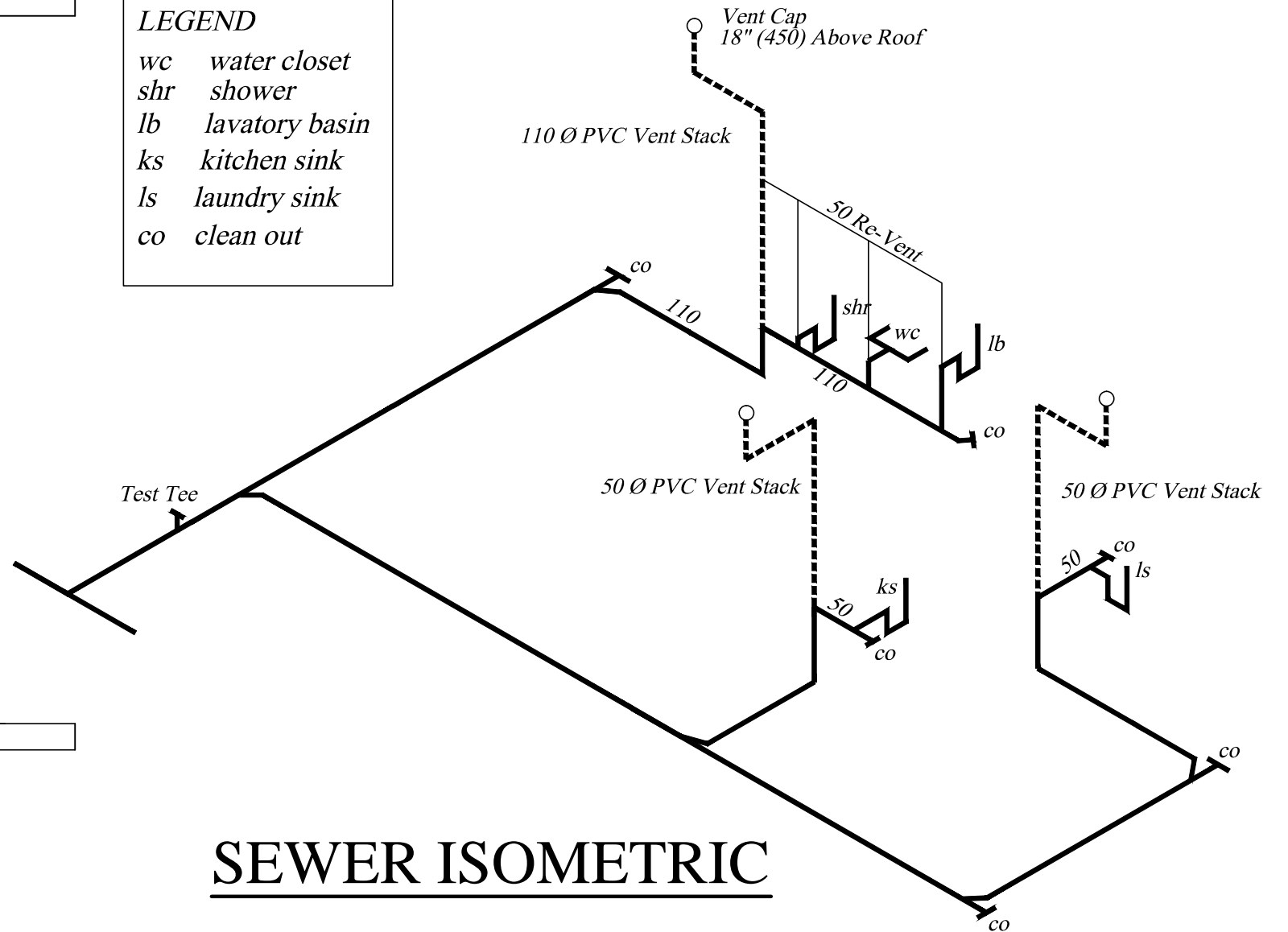
SEWER LAYOUT & ISOMETRIC (ST)	No.	Date	Notes	No.	Date	Revisions	Drawn By	Appr. By	CONSULTANTS: A & L ESTATE MANAGEMENT CONSULTANCY LIMITED #6 JADE BOULEVARD, EMPEROR COURT, BON AIR GARDENS, AROUCA TRINIDAD W.I. TEL: 642-4820 OR 681-7587	CLIENT: MINISTRY OF HOUSING LAND AND MARINE AFFAIRS		
	3 BEDROOM FLAT OPT.1										JOB TITLE: NEIGHBOURHOOD UPGRADING PROGRAMME STARTER HOUSING UNITS	
GNC Services <i>For Architectural Designs & General Drafting</i>		Certified By:		DATE:		SCALE:		DWG. NO.:				
Drawn By: Noreen Christopher		Checked By:		ALSTON FOURNILLIER		AUGUST 2013		3/8" = 1'-0"		3BF-1 / 06		



SEWER LAYOUT

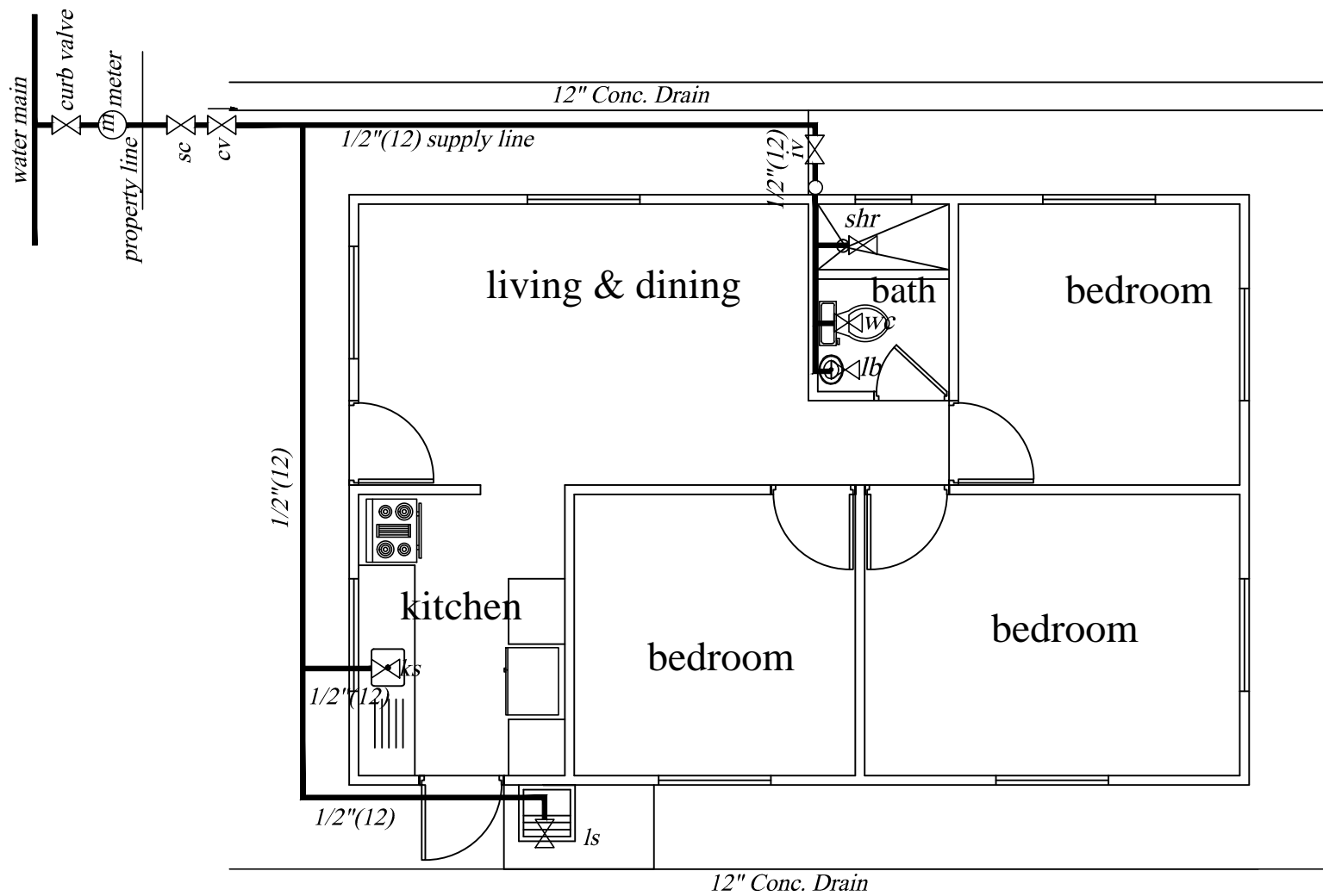
LEGEND

wc	water closet
shr	shower
lb	lavatory basin
ks	kitchen sink
ls	laundry sink
co	clean out



SEWER ISOMETRIC

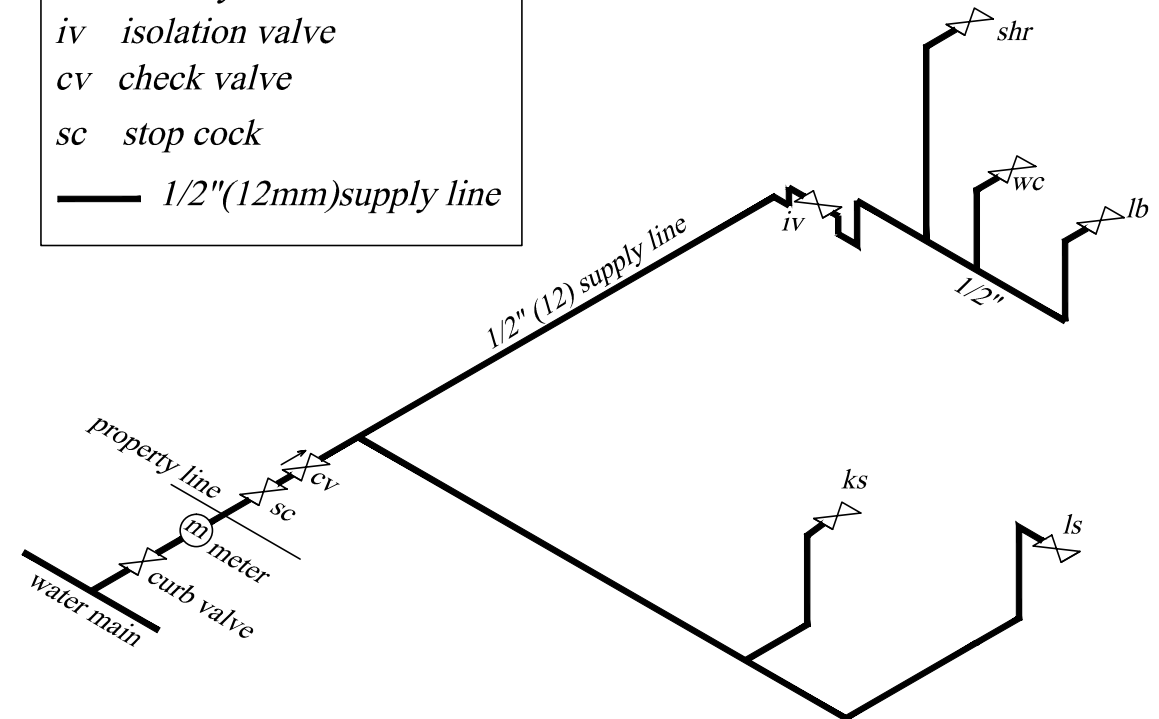
SEWER LAYOUT & ISOMETRIC	No.	Date	Notes	No.	Date	Revisions	Drawn By	Appr. By	CONSULTANTS: A & L ESTATE MANAGEMENT CONSULTANCY LIMITED #6 JADE BOULEVARD, EMPEROR COURT, BON AIR GARDENS, AROUCA TRINIDAD W.I. TEL: 642-4820 OR 681-7587	CLIENT: MINISTRY OF HOUSING LAND AND MARINE AFFAIRS			
	3 BEDROOM FLAT OPT.1										JOB TITLE: NEIGHBOURHOOD UPGRADING PROGRAMME STARTER HOUSING UNITS		
								GNC Services <i>For Architectural Designs & General Draughting</i> Drawn By: Noreen Christopher Checked By:		Certified By: ALSTON FOURNILLIER	DATE: AUGUST 2013	SCALE: 1:100	DWG. NO.: 3BF-1 / 06A



SUPPLY LAYOUT

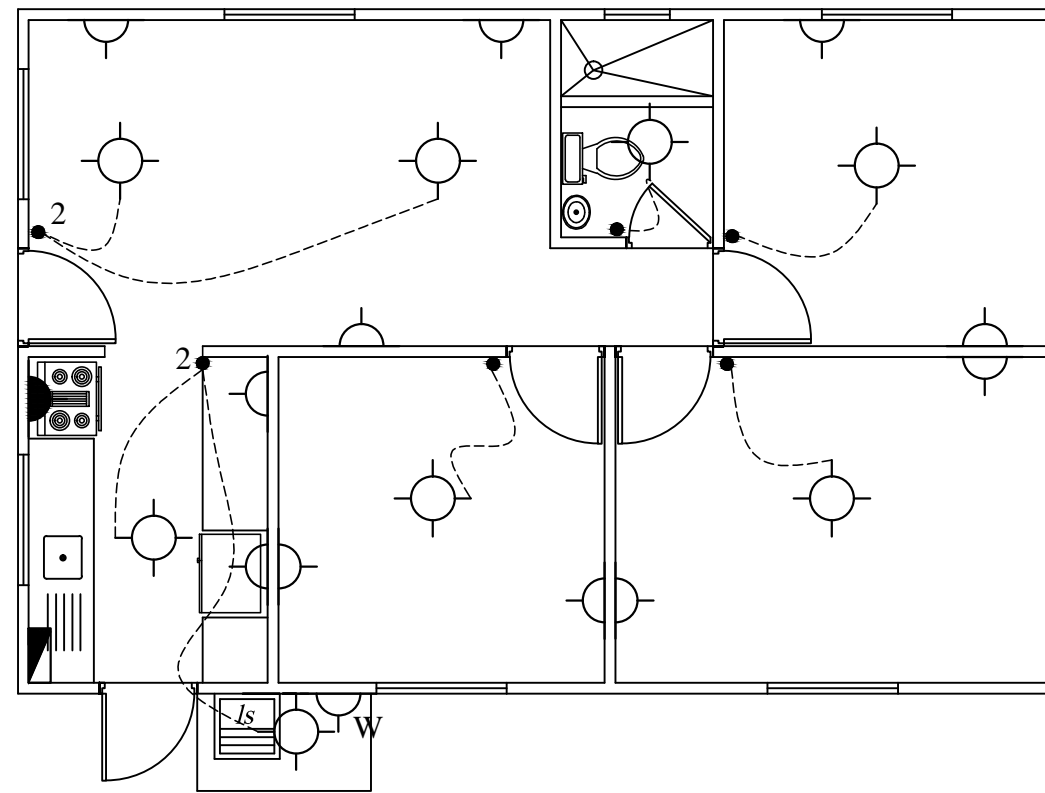
LEGEND

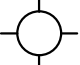
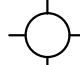
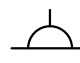
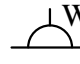




- wc water closet
- shr shower
- lb lavatory basin
- ks kitchen sink
- ls laundry sink
- iv isolation valve
- cv check valve
- sc stop cock
- 1/2"(12mm)supply line



SUPPLY ISOMETRIC

SUPPLY LAYOUT & ISOMETRIC 3 BEDROOM FLAT OPT. 1	No.	Date	Notes	No.	Date	Revisions	Drawn By	Appr. By	CONSULTANTS: A & L ESTATE MANAGEMENT CONSULTANCY LIMITED #6 JADE BOULEVARD, EMPEROR COURT, BON AIR GARDENS, AROUCA TRINIDAD W.I. TEL: 642-4820 OR 681-7587	CLIENT: MINISTRY OF HOUSING LAND AND MARINE AFFAIRS			
										JOB TITLE: NEIGHBOURHOODUPGRADING PROGRAMME STARTER HOUSING UNITS			
								GNC Services <i>For Architectural Designs & General Draughting</i> Drawn By: Noreen Christopher Checked By:		Certified By: ALSTON FOURNILLIER	DATE: AUGUST 2013	SCALE: 3/8" = 1'-0"	DWG. NO.: 3BF-1 / 07



-  CEILING LIGHT
-  WALL LIGHT
-  OUTLET 110V
-  OUTLET 110V (WEATHER PROOF)
-  OUTLET 220V
-  SINGLE SWITCH
-  DOUBLE SWITCH
-  PANEL BOX

ELECTRICAL LAYOUT

ELECTRICAL LAYOUT	No.	Date	Notes	No.	Date	Revisions	Drawn By	Appr. By	CONSULTANTS: A & L ESTATE MANAGEMENT CONSULTANCY LIMITED <small>#6 JADE BOULEVARD, EMPEROR COURT, BON AIR GARDENS, AROUCA TRINIDAD W.I. TEL: 642-4820 OR 681-7587</small>	CLIENT: MINISTRY OF HOUSING LAND AND MARINE AFFAIRS			
	3 BEDROOM FLAT OPT. 1									JOB TITLE: NEIGHBOURHOODUPGRADING PROGRAMME STARTER HOUSING UNITS			
									GNC Services For Architectural Designs & General Draughting	ENGINEER: FRANCIS ANTOINE	DATE: AUGUST 2013	SCALE: 3/8" = 1'-0"	DWG. NO.: 3BF-1 / 08
									Drawn By: Noreen Christopher	Checked By:			