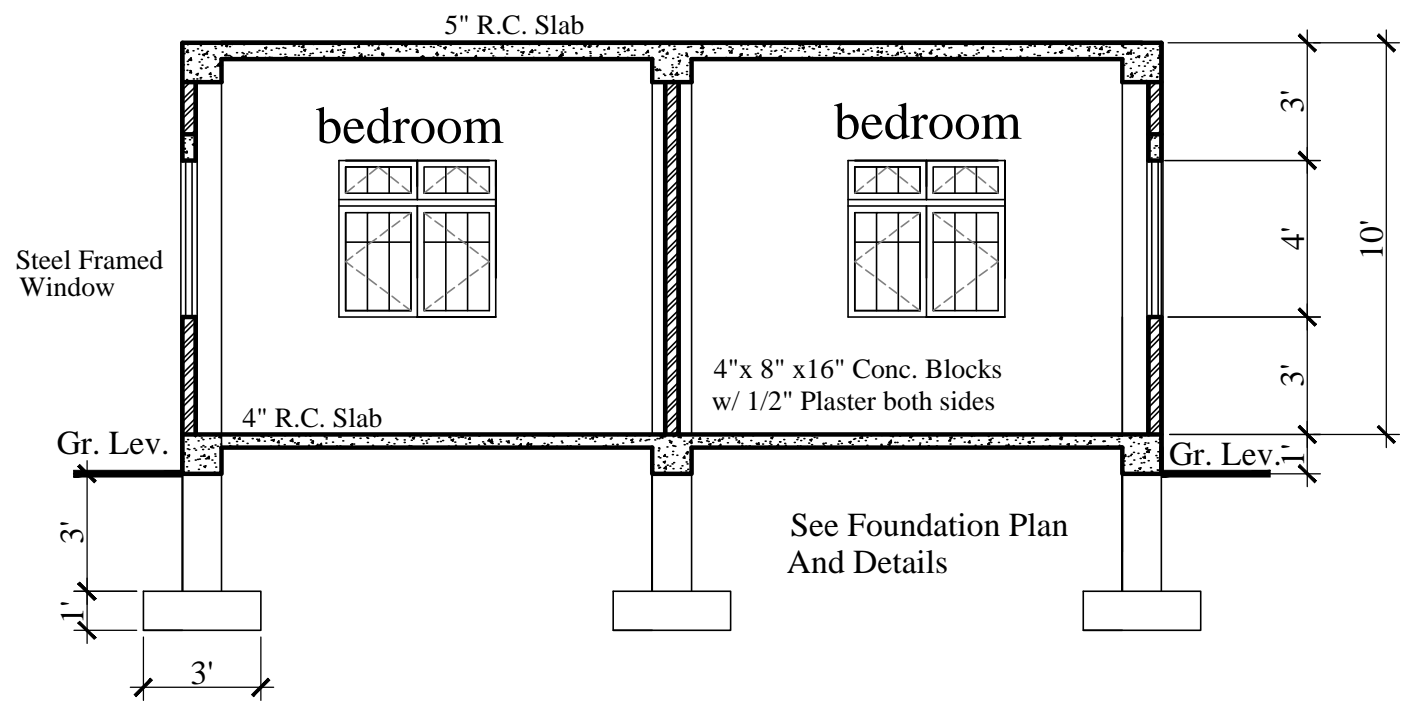


FLOOR PLAN

625.00 S.F.

**2 Bedroom - 1 Bath
2 Storey (Ground Floor Only)**



CROSS SECTION

**FLOOR PLAN AND
CROSS SECTION**
2 BEDROOM
2 Storey - Ground Floor Only

No.	Date	Notes	No.	Date	Revisions	Drawn By	Appr. By

CONSULTANTS:
**A & L ESTATE MANAGEMENT
CONSULTANCY LIMITED**
#6 JADE BOULEVARD, EMPEROR COURT,
BON AIR GARDENS, AROUCA
TRINIDAD W.I.
TEL: 642-4820 OR 681-7587

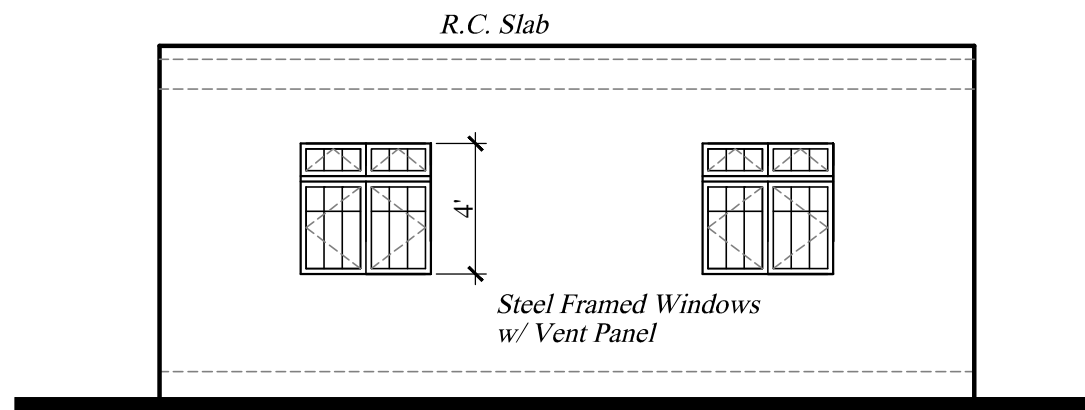
ENGINEER:
FRANCIS ANTOINE

Drawn By: **KURT FORDE** Checked By: **N.C.**

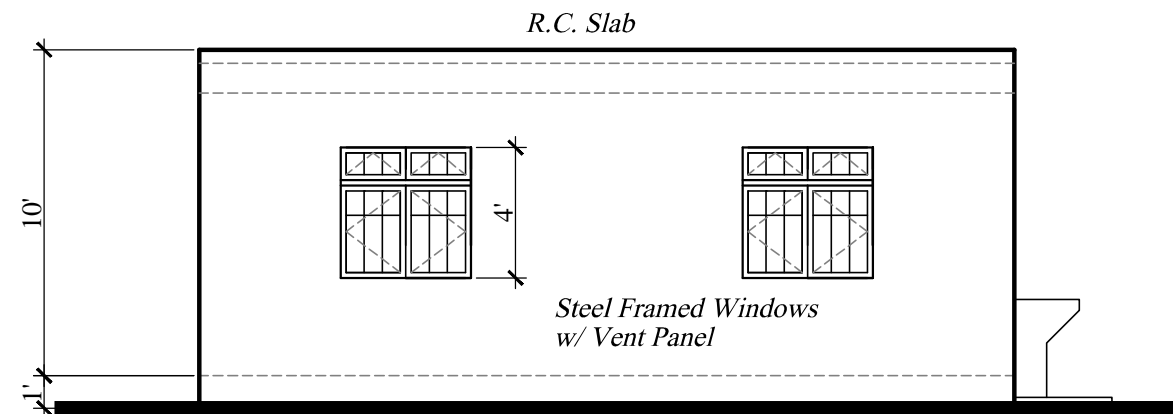
CLIENT:
MINISTRY OF HOUSING LAND AND MARINE AFFAIRS

JOB TITLE:
**NEIGHBOURHOOD UPGRADING PROGRAMME
STARTER HOUSING UNITS**

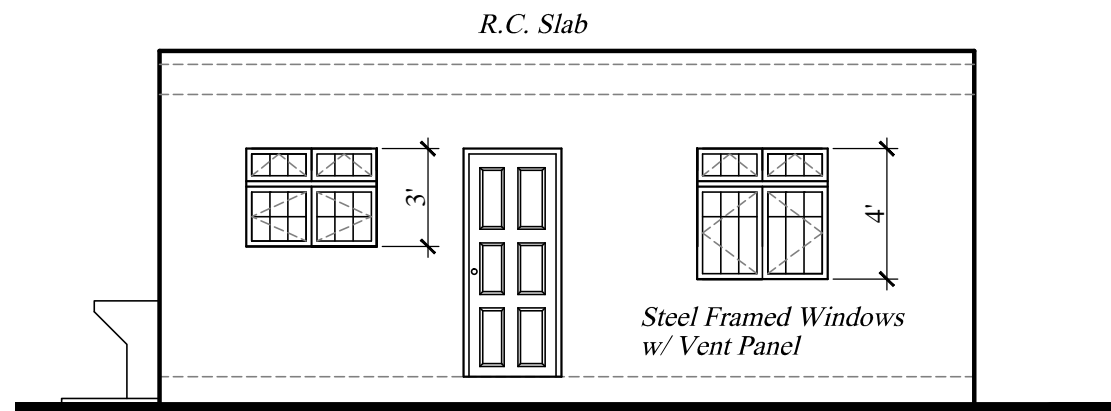
DATE: **AUGUST 2013** SCALE: **3/8" = 1'-0"** DWG. NO.: **2B-2St. GF / 01**



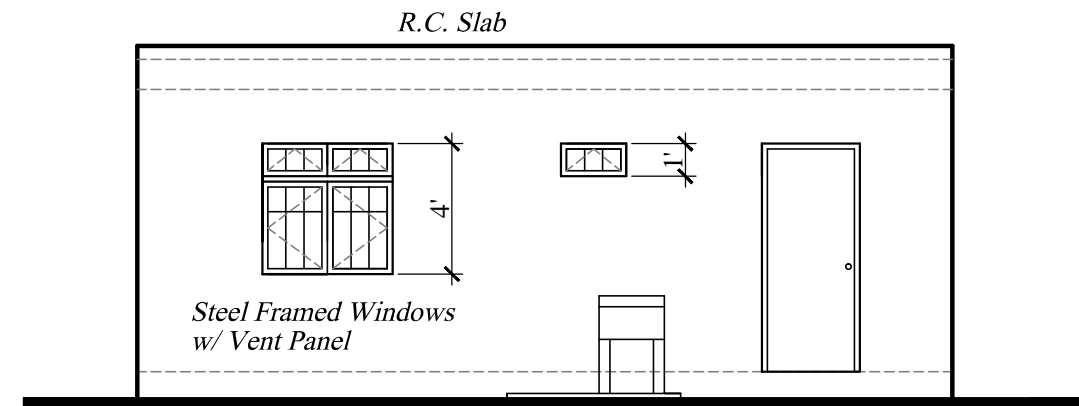
ELEVATION 2



ELEVATION 3

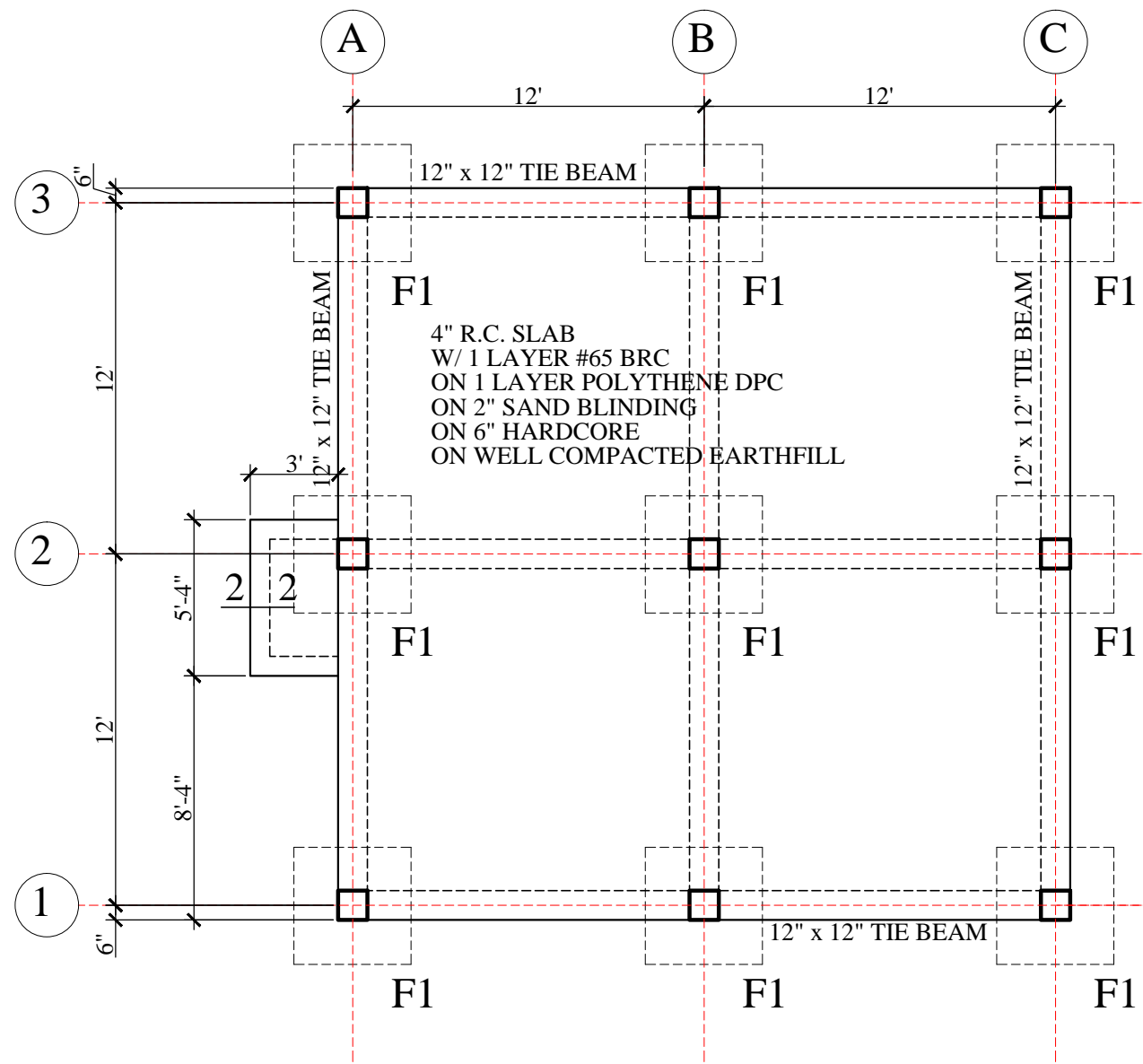


ELEVATION 1

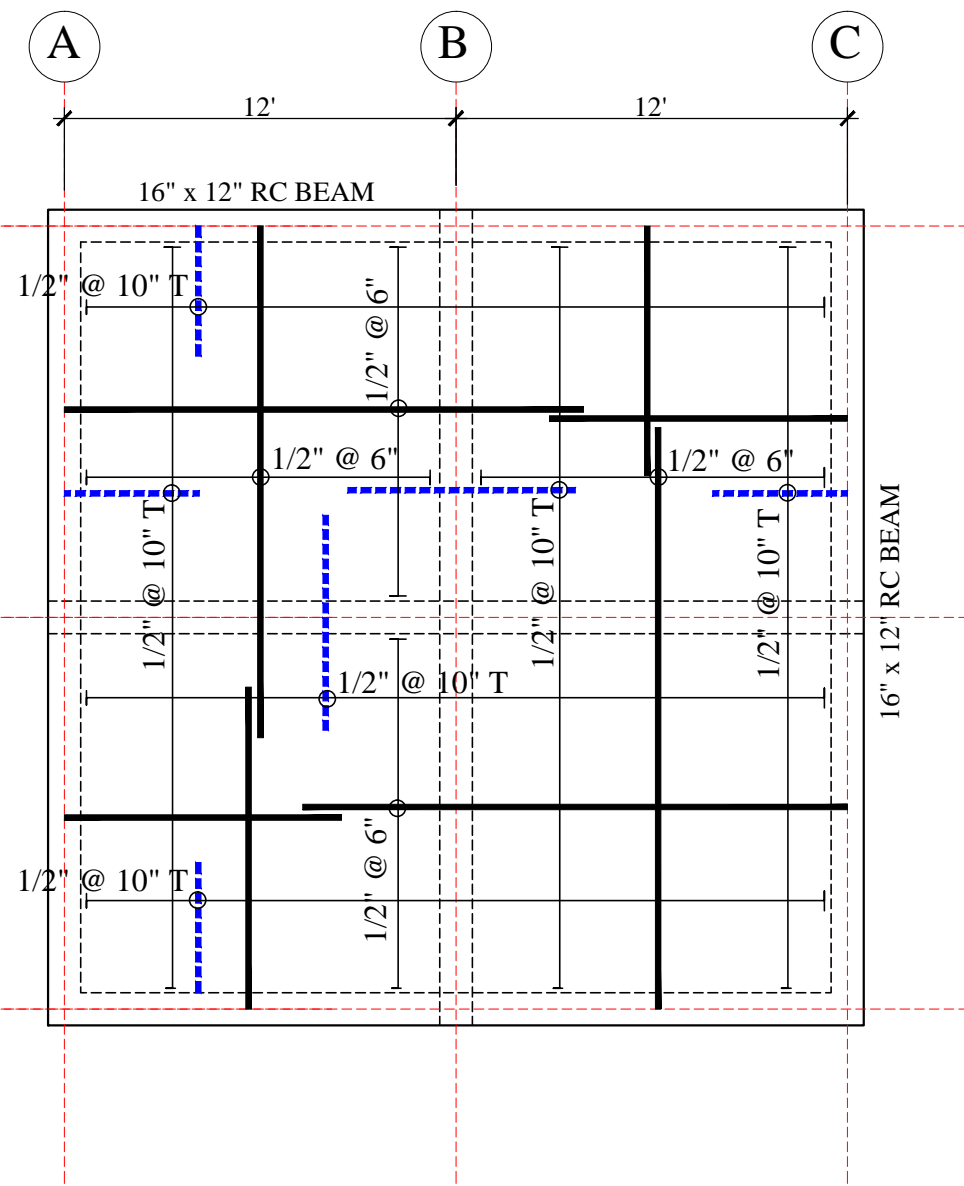


ELEVATION 4

ELEVATIONS	No.	Date	Notes	No.	Date	Revisions	Drawn By	Appr. By	CONSULTANTS: A & L ESTATE MANAGEMENT CONSULTANCY LIMITED #6 JADE BOULEVARD, EMPEROR COURT, BON AIR GARDENS, AROUCA TRINIDAD W.I. TEL: 642-4820 OR 681-7587	CLIENT: MINISTRY OF HOUSING LAND AND MARINE AFFAIRS			
										JOB TITLE: NEIGHBOURHOOD UPGRADING PROGRAMME STARTER HOUSING UNITS			
2 BEDROOM 2 Storey - Ground Floor Only									GNC Services <i>For Architectural Designs & General Draughting</i> Drawn By: KURT FORDE Checked By: N.C.	ENGINEER: FRANCIS ANTOINE	DATE: AUGUST 2013	SCALE: 3/8" = 1'-0"	DWG. NO.: 2B-2St. GF / 02

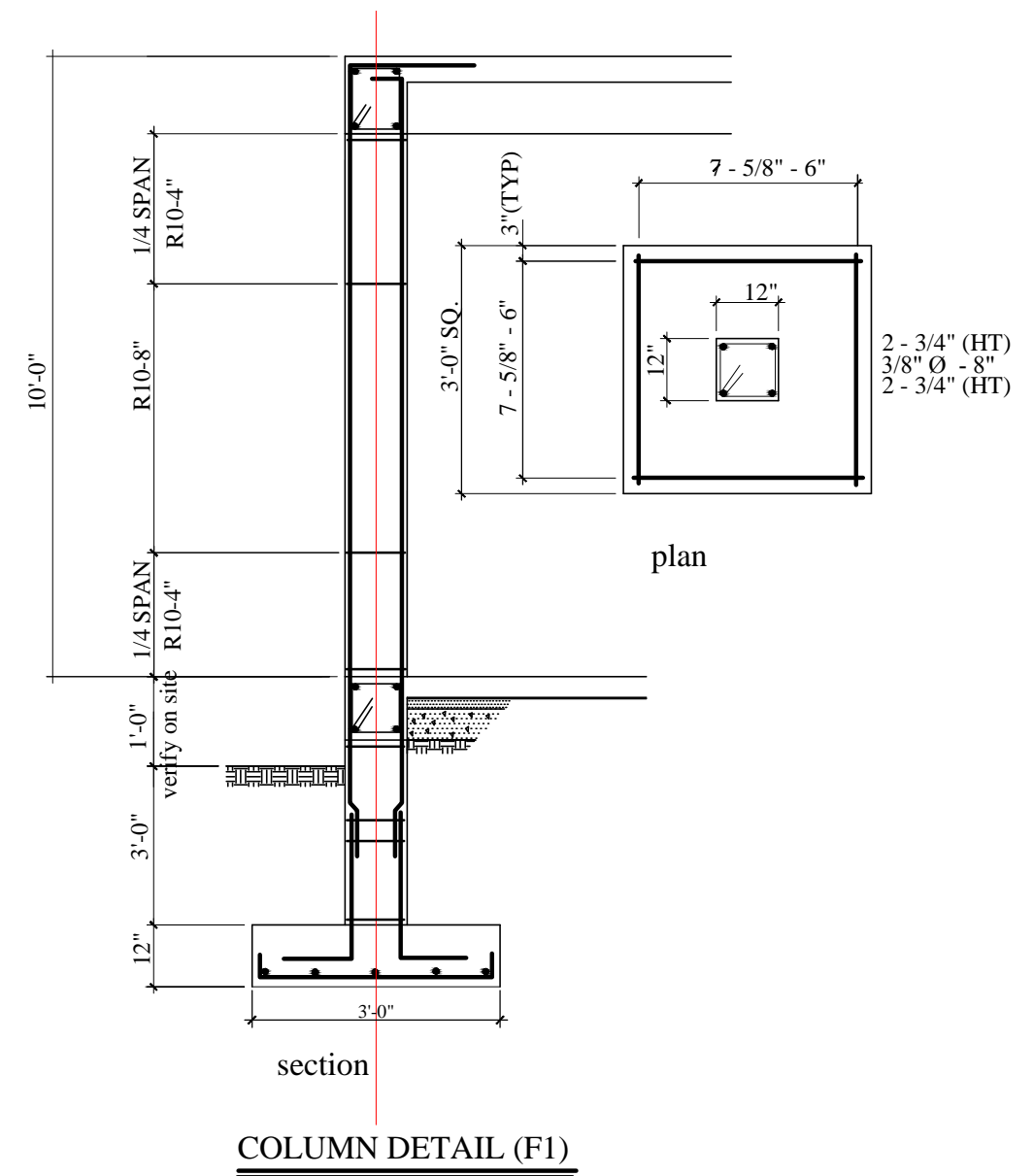
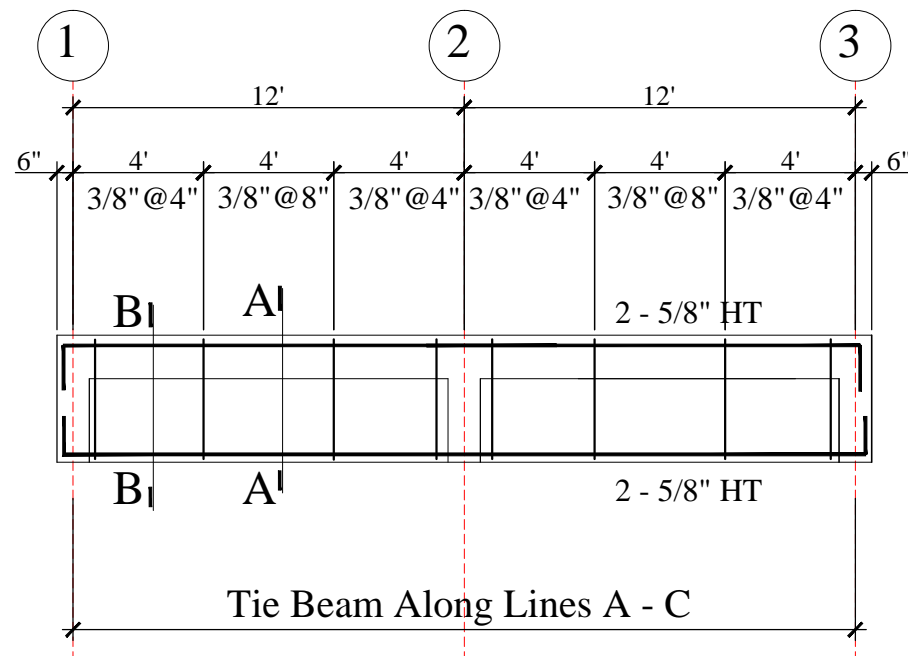
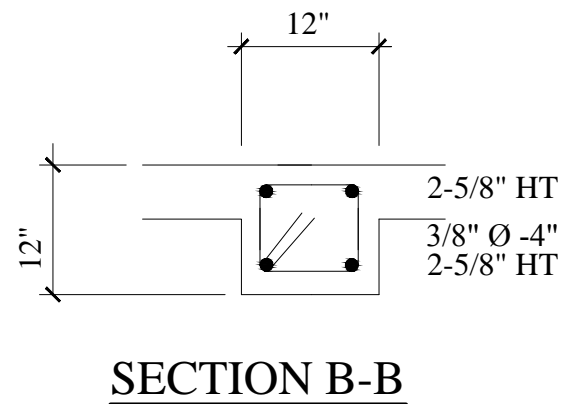
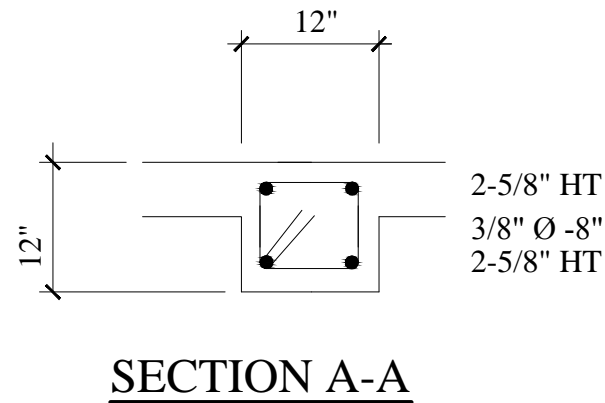
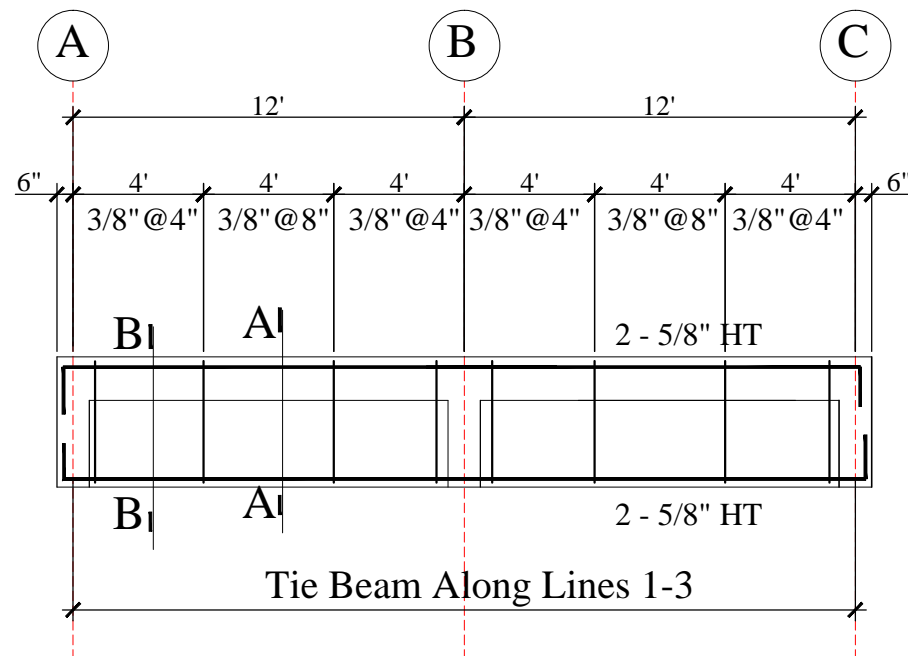


FOUNDATION PLAN



FIRST FLOOR FRAMING PLAN

FOUNDATION AND FIRST FLOOR FRAMING PLANS 2 BEDROOM 2 Storey - Ground Floor Only	No.	Date	Notes	No.	Date	Revisions	Drawn By	Appr. By	CONSULTANTS: A & L ESTATE MANAGEMENT CONSULTANCY LIMITED #6 JADE BOULEVARD, EMPEROR COURT, BON AIR GARDENS, AROUCA TRINIDAD W.I. TEL: 642-4820 OR 681-7587	CLIENT: MINISTRY OF HOUSING LAND AND MARINE AFFAIRS JOB TITLE: NEIGHBOURHOOD UPGRADING PROGRAMME STARTER HOUSING UNITS		
											ENGINEER: FRANCIS ANTOINE	DATE: AUGUST 2013



FOUNDATION DETAILS

2 BEDROOM
 2 Storey - Ground Floor Only

No.	Date	Notes	No.	Date	Revisions	Drawn By	Appr. By

CONSULTANTS:
A & L ESTATE MANAGEMENT CONSULTANCY LIMITED
 #6 JADE BOULEVARD, EMPEROR COURT,
 BON AIR GARDENS, AROUCA
 TRINIDAD W.I.
 TEL: 642-4820 OR 681-7587

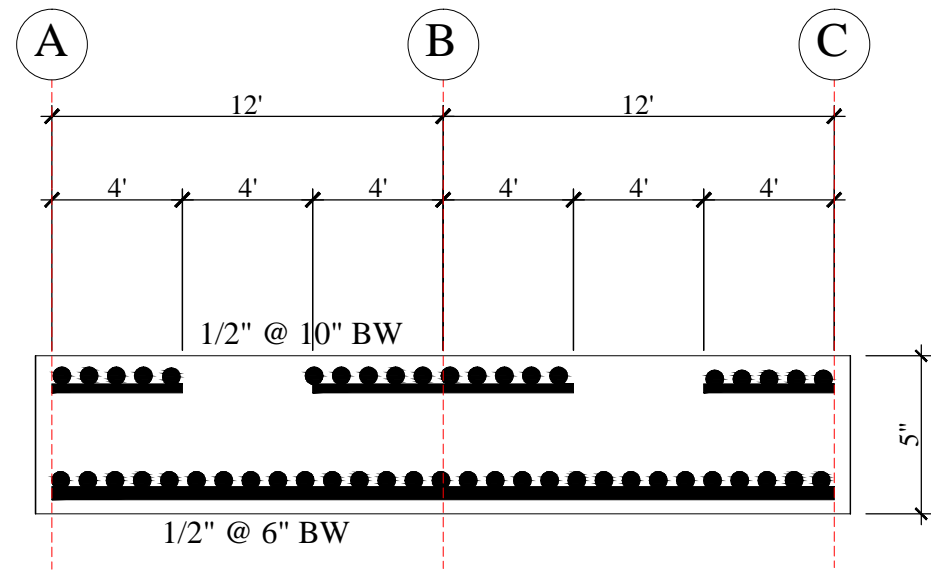
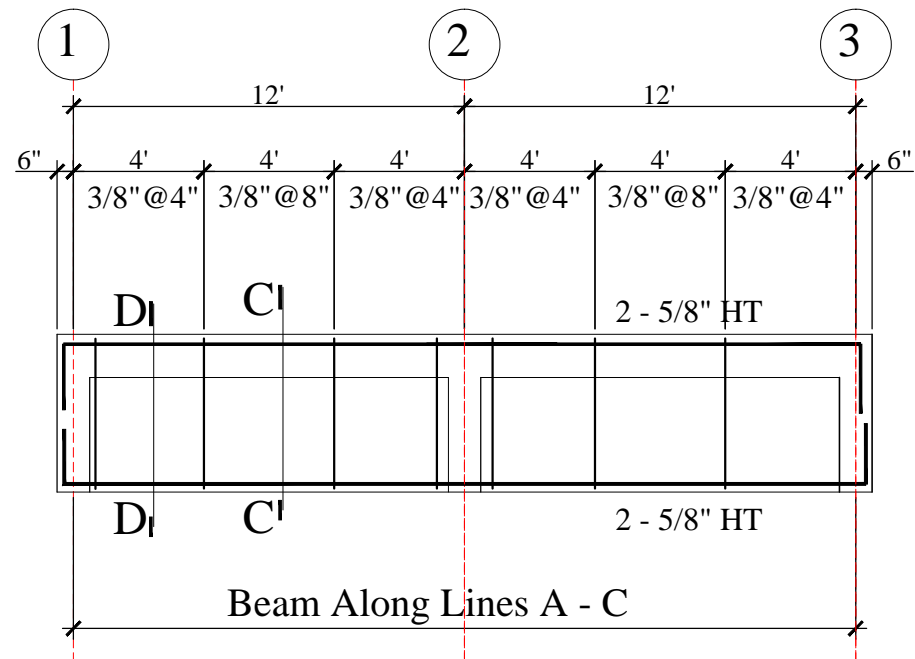
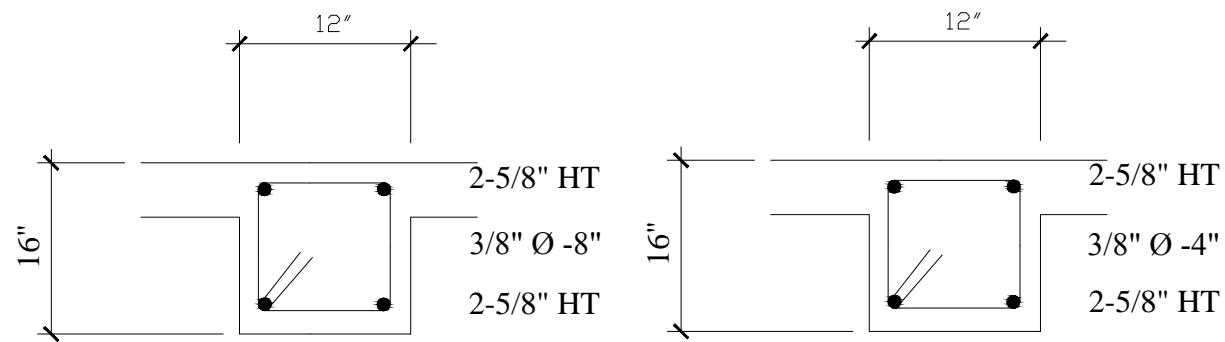
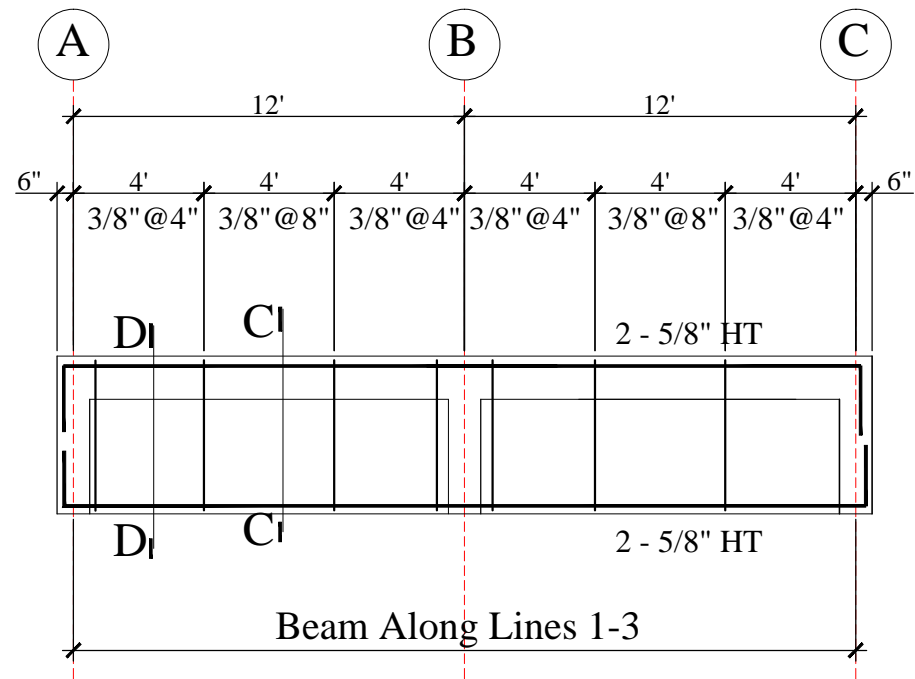
GNC Services
 For Architectural Designs & General Drafting
 Drawn By: Noreen Christopher Checked By:

ENGINEER:
FRANCIS ANTOINE

CLIENT:
MINISTRY OF HOUSING LAND AND MARINE AFFAIRS

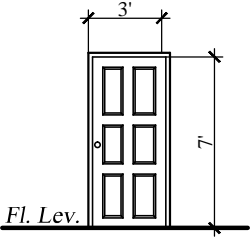
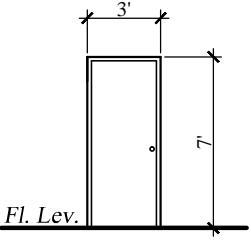
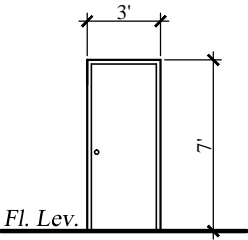
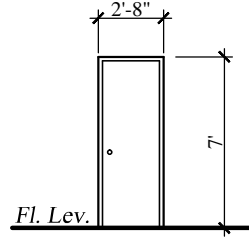
JOB TITLE:
**NEIGHBOURHOOD UPGRADING PROGRAMME
 STARTER HOUSING UNITS**

DATE: AUGUST 2013 SCALE: 3/8" = 1'-0" DWG. NO.: **2B-2St. GF / 04**

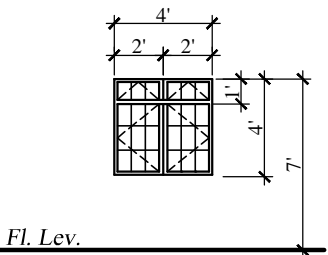
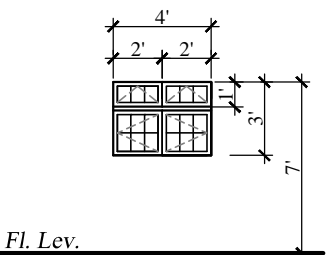
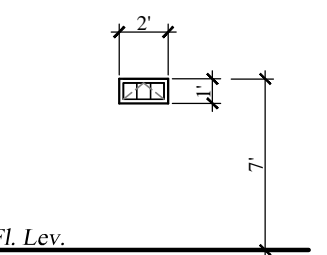


FIRST FLOOR FRAMING DETAILS	No.	Date	Notes	No.	Date	Revisions	Drawn By	Appr. By	CONSULTANTS: A & L ESTATE MANAGEMENT CONSULTANCY LIMITED #6 JADE BOULEVARD, EMPEROR COURT, BON AIR GARDENS, AROUCA TRINIDAD W.I. TEL: 642-4820 OR 681-7587	CLIENT: MINISTRY OF HOUSING LAND AND MARINE AFFAIRS		
	2 BEDROOM 2 Storey - Ground Floor Only									JGNC Services <i>For Architectural Designs & General Drafting</i>	ENGINEER: FRANCIS ANTOINE	JOB TITLE: NEIGHBOURHOOD UPGRADING PROGRAMME STARTER HOUSING UNITS
							Drawn By: Noreen Christopher	Checked By:		DATE: AUGUST 2013	SCALE: 3/8" = 1'-0"	DWG. NO.: 2B-2St. GF / 05

DOOR SCHEDULE

				
DESCRIPTION	(D1)	(D2)	(D3)	(D4)
NO: REQUIRED	1	1	2	1
LOCATION	Entrance - Livng & Dining	Kitchen	Bedrooms	Bath
REMARKS	Solid Core Panel Door	Solid Flush Door	Semi-Solid Flush Door	Semi-Solid Flush Door

WINDOW SCHEDULE

			
DESCRIPTION	(W1)	(W2)	(W3)
NO: REQUIRED	6	1	1
LOCATION	Living & Dining And Bedrooms	Kitchen	Bath
REMARKS	Steel Framed Windows w/ Burglar Proof Bars	Steel Framed Windows w/ Burglar Proof Bars	Top Hung Steel Framed Window w/ Burglar Proof Bars

DOOR AND WINDOW SCHEDULE
2 BEDROOM
2 Storey - Ground Floor Only

No.	Date	Notes	No.	Date	Revisions	Drawn By	Appr. By

CONSULTANTS:
A & L ESTATE MANAGEMENT CONSULTANCY LIMITED
#6 JADE BOULEVARD, EMPEROR COURT,
BON AIR GARDENS, AROUCA
TRINIDAD W.I.
TEL: 642-4820 OR 681-7587

GNC Services
For Architectural Designs & General Draughting

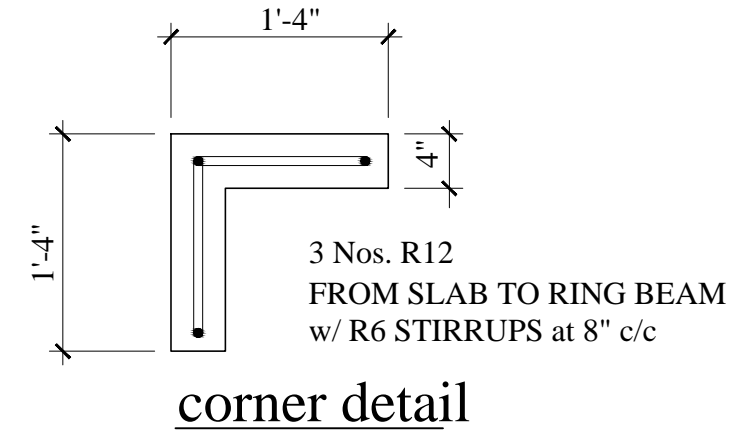
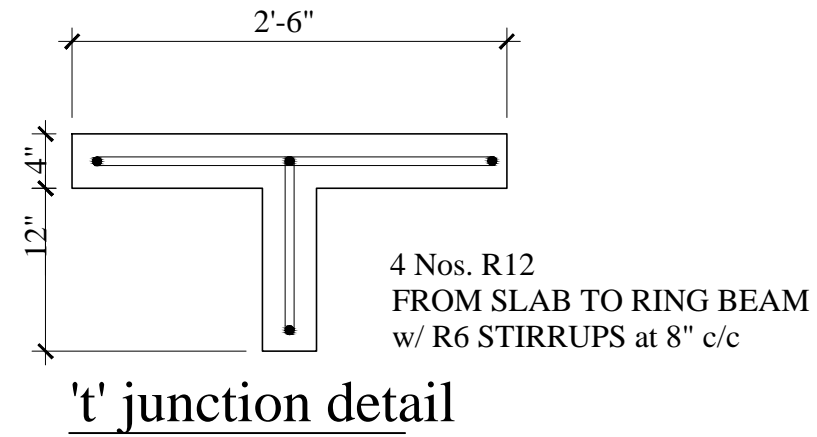
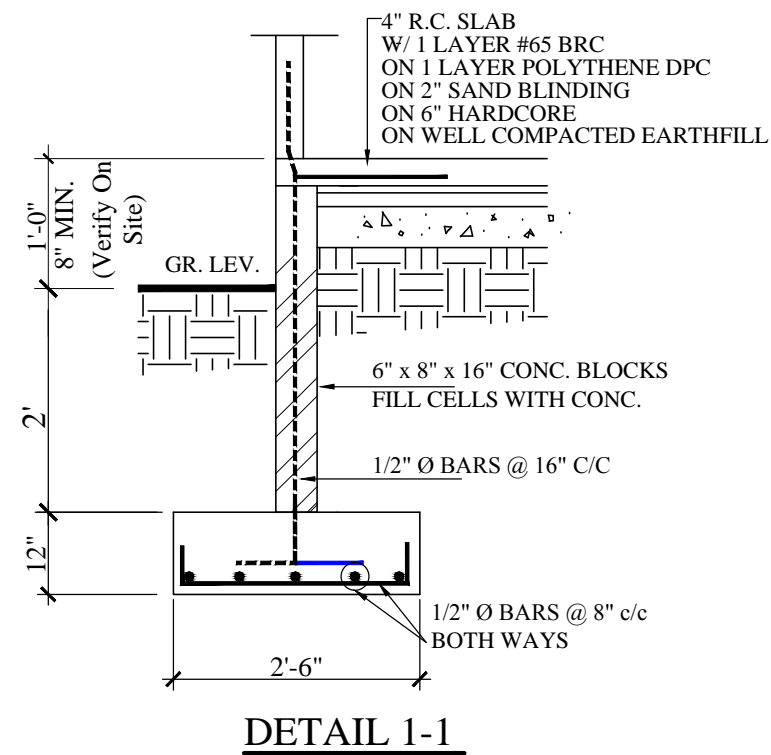
ENGINEER:
FRANCIS ANTOINE

Drawn By: Noreen Christopher Checked By:

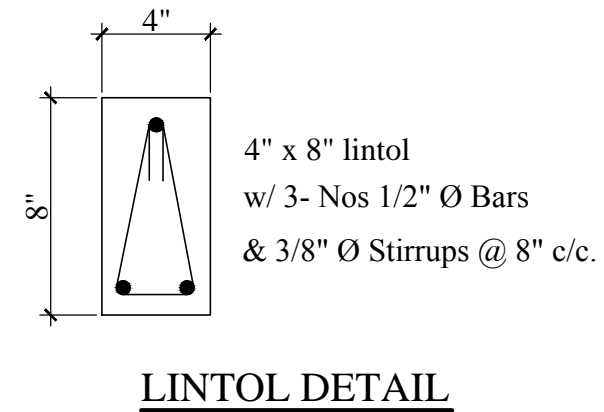
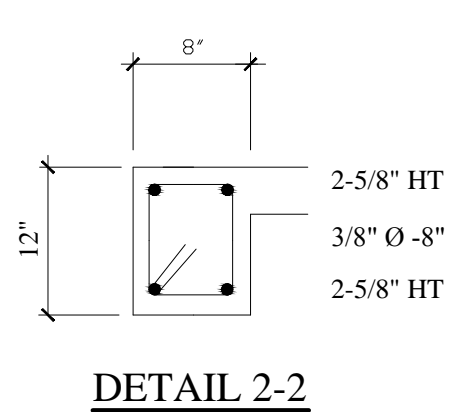
CLIENT:
MINISTRY OF HOUSING LAND AND MARINE AFFAIRS

JOB TITLE:
NEIGHBOURHOOD UPGRADING PROGRAMME
STARTER HOUSING UNITS

DATE: AUGUST 2013 SCALE: 3/8" = 1'-0" DWG. NO.: 2B-2St. GF / 06



WALL STIFFENERS DETAILS



TYPICAL DETAILS

2 BEDROOM
2 Storey - Ground Floor Only

No.	Date	Notes	No.	Date	Revisions	Drawn By	Appr. By

CONSULTANTS:
**A & L ESTATE MANAGEMENT
CONSULTANCY LIMITED**
#6 JADE BOULEVARD, EMPEROR COURT,
BON AIR GARDENS, AROUCA
TRINIDAD W.I.
TEL: 642-4820 OR 681-7587

GNC Services
For Architectural Designs & General Draughting

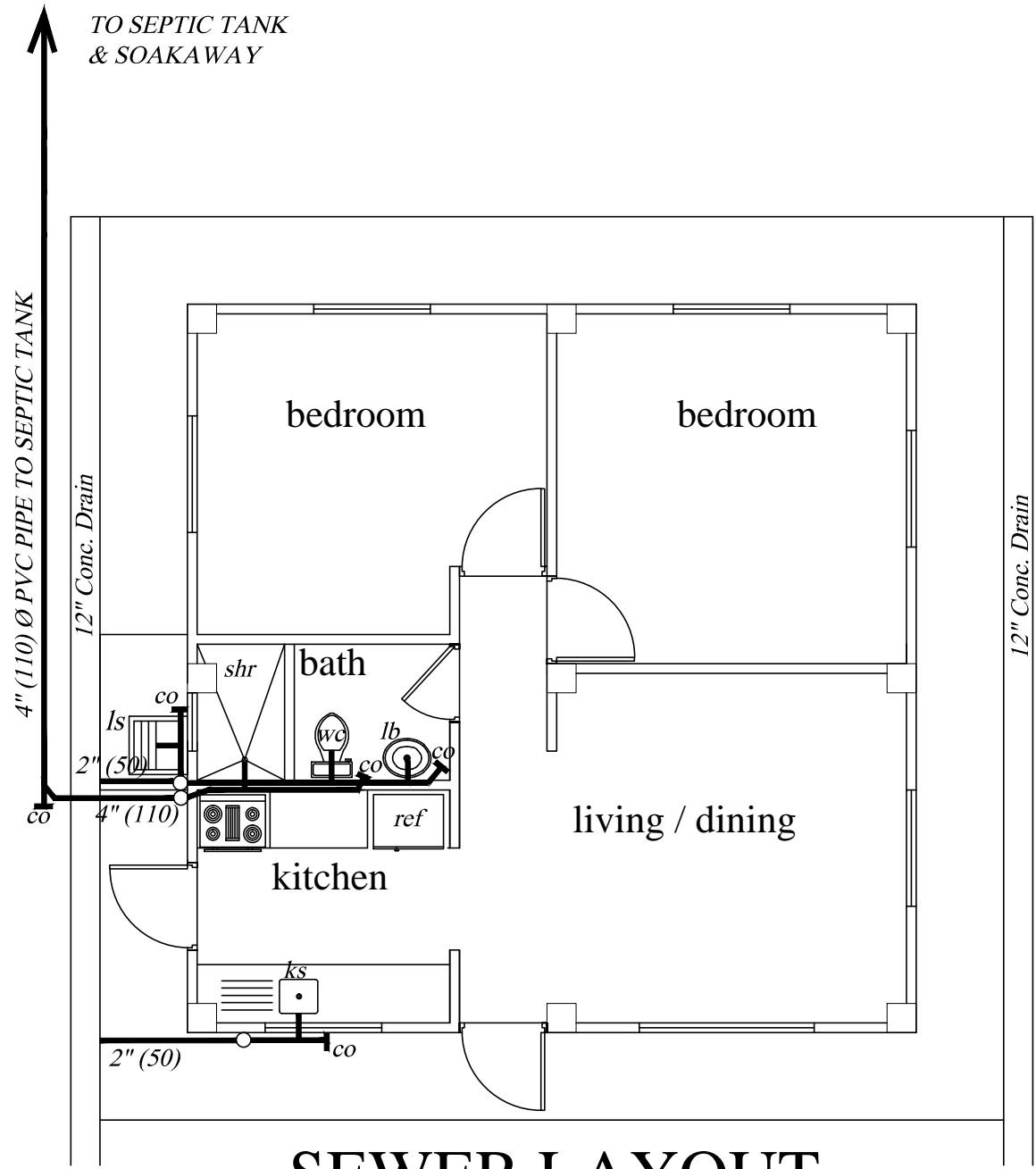
ENGINEER:
FRANCIS ANTOINE

Drawn By: Noreen Christopher Checked By:

CLIENT:
MINISTRY OF HOUSING LAND AND MARINE AFFAIRS

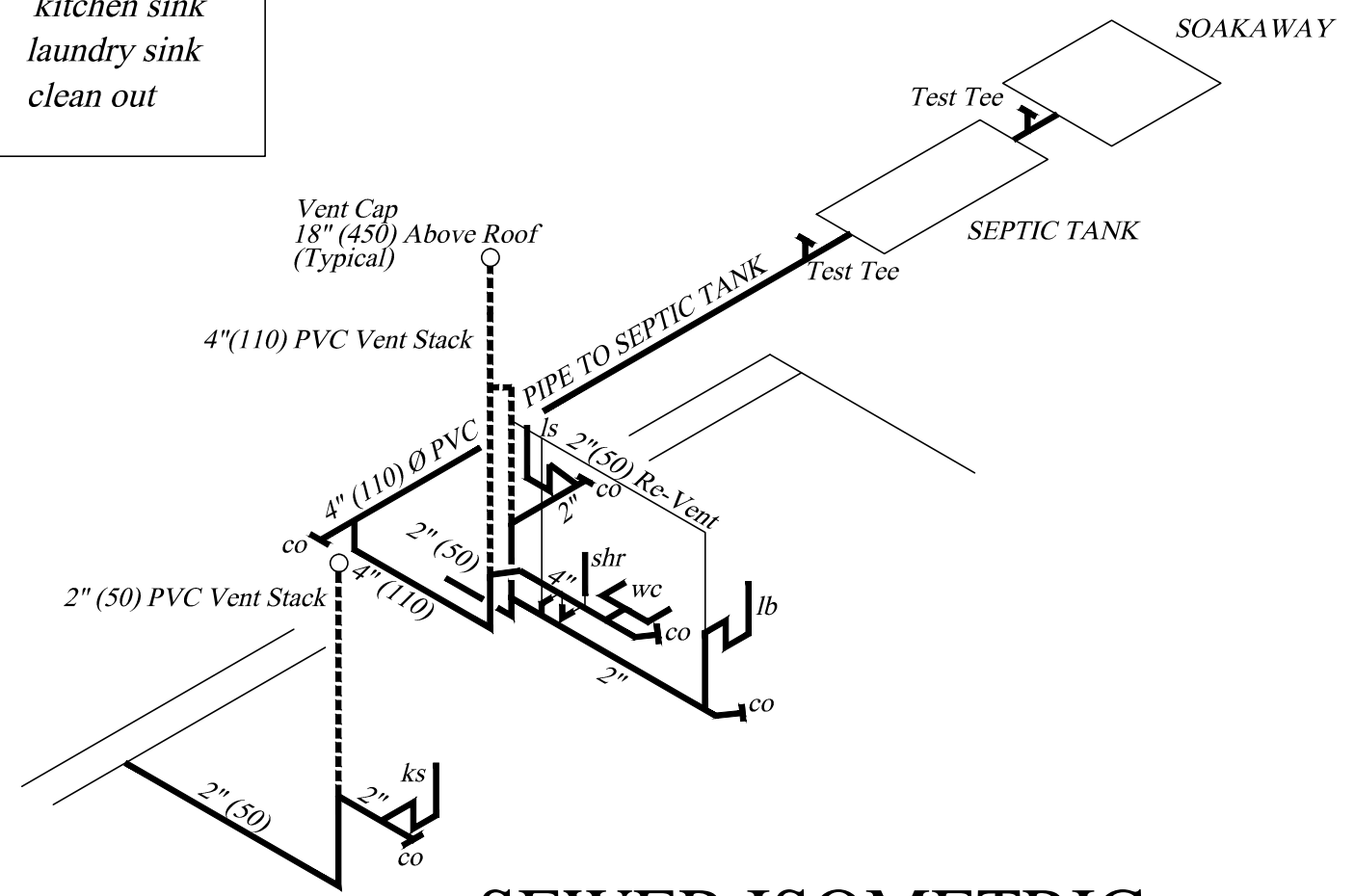
JOB TITLE:
NEIGHBOURHOOD UPGRADING PROGRAMME
STARTER HOUSING UNITS

DATE: AUGUST 2013 SCALE: 3/8" = 1'-0" DWG. NO.: 2B-2St. GF / 07



SEWER LAYOUT

LEGEND
 wc water closet
 shr shower
 lb lavatory basin
 ks kitchen sink
 ls laundry sink
 co clean out



SEWER ISOMETRIC

SEWER LAYOUT
AND ISOMETRIC (ST)

2 BEDROOM
2 Storey - Ground Floor Only

No.	Date	Notes	No.	Date	Revisions	Drawn By	Appr. By

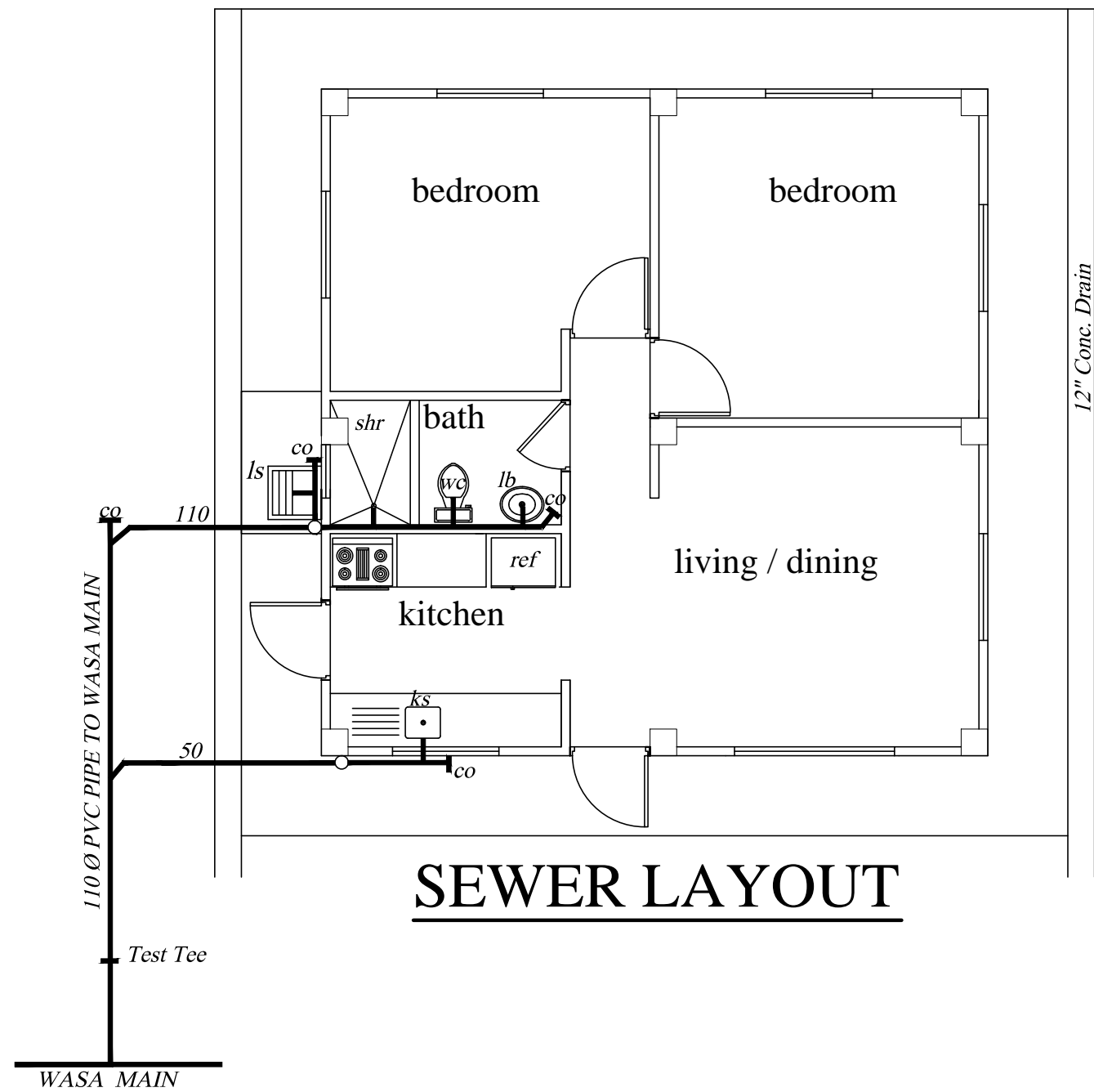
CONSULTANTS:
**A & L ESTATE MANAGEMENT
 CONSULTANCY LIMITED**
 #6 JADE BOULEVARD, EMPEROR COURT,
 BON AIR GARDENS, AROUCA
 TRINIDAD W.I.
 TEL: 642-4820 OR 681-7587

GNC Services
 For Architectural Designs & General Draughting
 Drawn By: Noreen Christopher Checked By: Certified By: ALSTON FOURNILLIER

CLIENT:
MINISTRY OF HOUSING LAND AND MARINE AFFAIRS

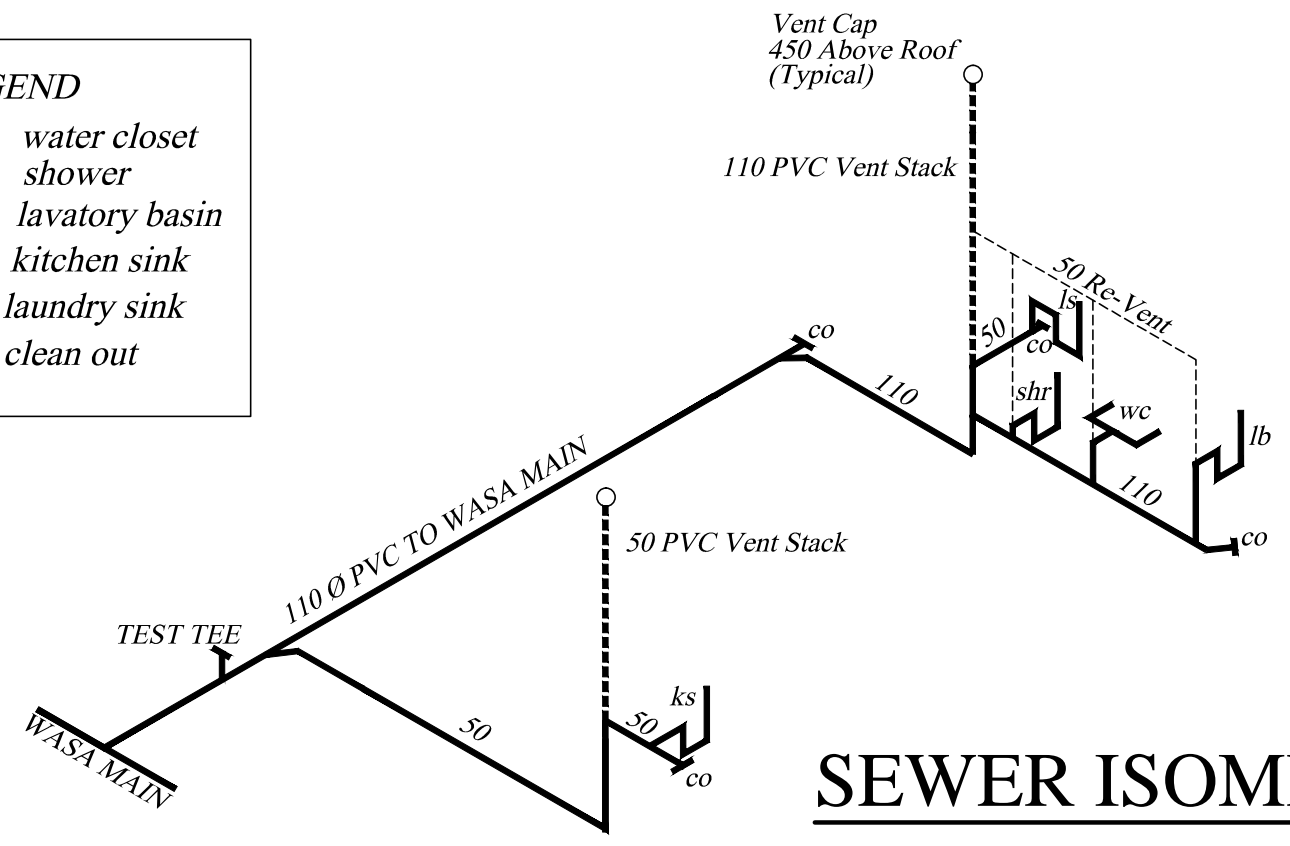
JOB TITLE:
**NEIGHBOURHOOD UPGRADING PROGRAMME
 STARTER HOUSING UNITS**

DATE: AUGUST 2013 SCALE: 3/8" = 1'-0" DWG. NO.: 2B-2St. GF / 08



SEWER LAYOUT

- LEGEND**
- wc water closet
 - shr shower
 - lb lavatory basin
 - ks kitchen sink
 - ls laundry sink
 - co clean out



SEWER ISOMETRIC

SEWER LAYOUT AND ISOMETRIC

2 BEDROOM
2 Storey - Ground Floor Only

No.	Date	Notes	No.	Date	Revisions	Drawn By	Appr. By

CONSULTANTS:
A & L ESTATE MANAGEMENT CONSULTANCY LIMITED
 #6 JADE BOULEVARD, EMPEROR COURT,
 BON AIR GARDENS, AROUCA
 TRINIDAD W.I.
 TEL: 642-4820 OR 681-7587

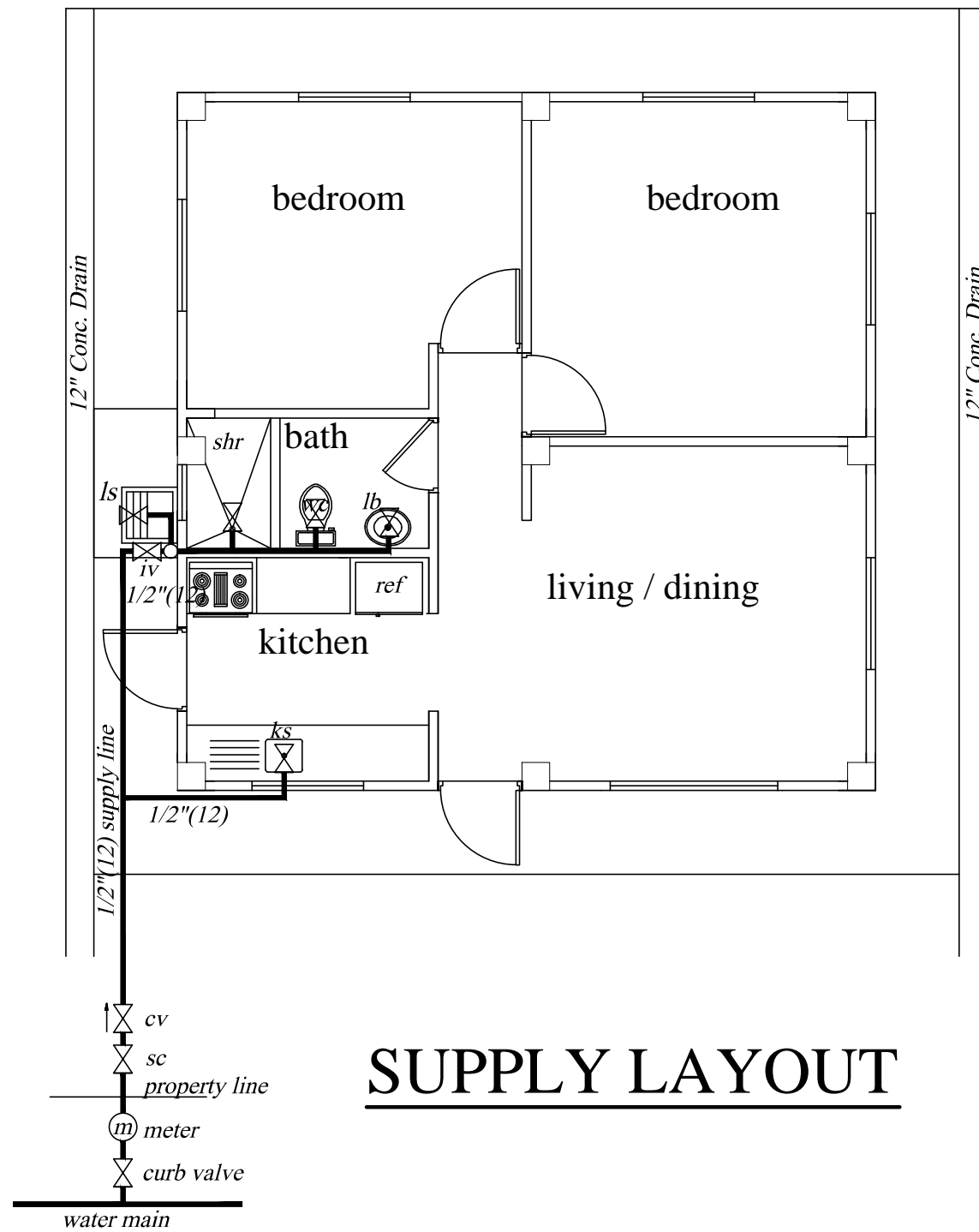
AGNC Services
For Architectural Designs & General Draughting

Drawn By: Noreen Christopher Checked By: Certified By: **ALSTON FOURNILLIER**

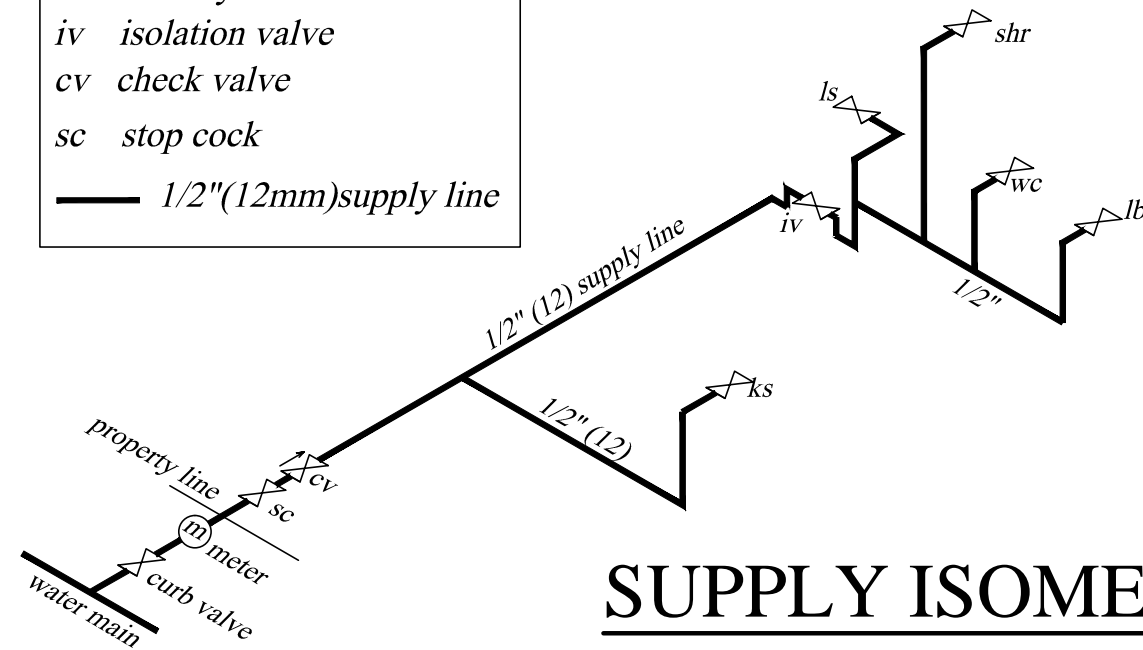
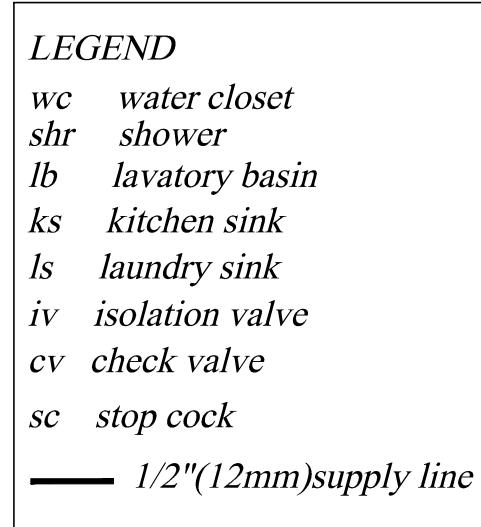
CLIENT:
 MINISTRY OF HOUSING LAND AND MARINE AFFAIRS

JOB TITLE:
 NEIGHBOURHOOD UPGRADING PROGRAMME
 STARTER HOUSING UNITS

DATE: AUGUST 2013 SCALE: 3/8" = 1'-0" DWG. NO.: **2B-2St. GF / 08A**



SUPPLY LAYOUT



SUPPLY ISOMETRIC

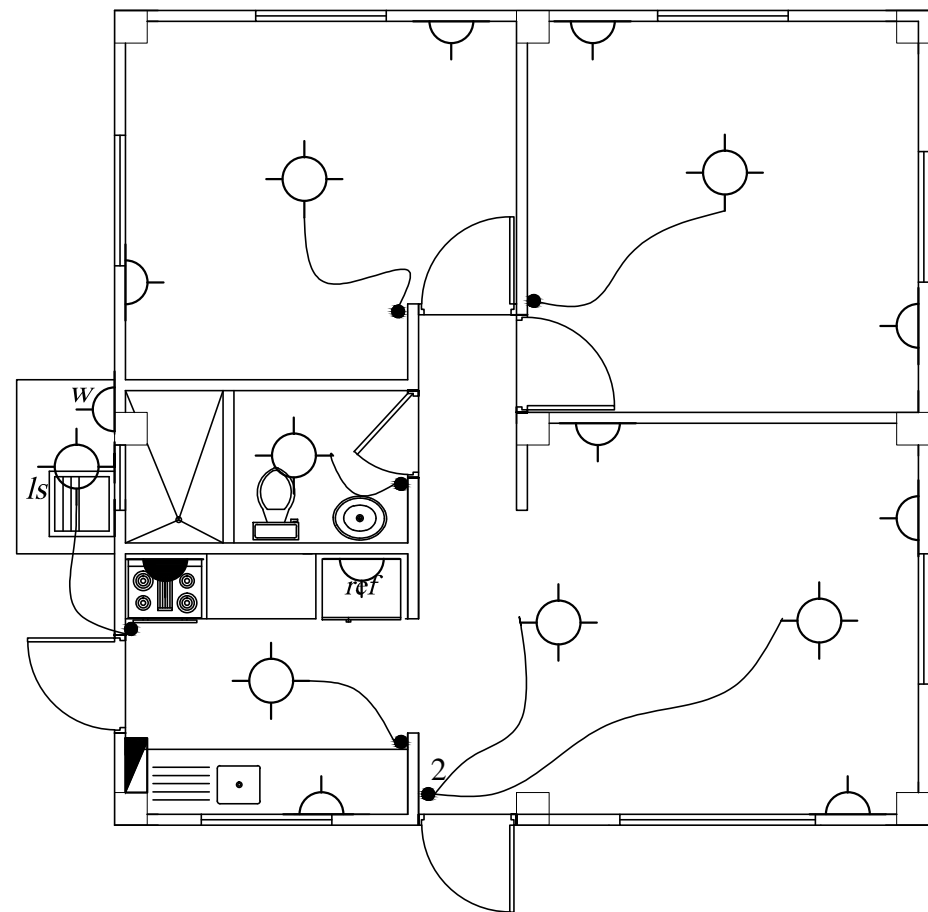
SUPPLY LAYOUT
AND ISOMETRIC

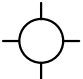
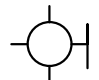
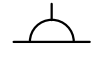
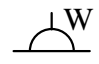




2 BEDROOM
2 Storey - Ground Floor Only

No.	Date	Notes	No.	Date	Revisions	Drawn By	Appr. By

CONSULTANTS: A & L ESTATE MANAGEMENT CONSULTANCY LIMITED #6 JADE BOULEVARD, EMPEROR COURT, BON AIR GARDENS, AROUCA TRINIDAD W.I. TEL: 642-4820 OR 681-7587	
GNC Services For Architectural Designs & General Drafting	Certified By: ALSTON FOURNILLIER
Drawn By: Noreen Christopher	Checked By:

CLIENT: MINISTRY OF HOUSING LAND AND MARINE AFFAIRS	
JOB TITLE: NEIGHBOURHOOD UPGRADING PROGRAMME STARTER HOUSING UNITS	
DATE: AUGUST 2013	SCALE: 3/8" = 1'-0"
DWG. NO.:	2B-2St. GF / 09



-  CEILING LIGHT
-  WALL LIGHT
-  OUTLET 110V
-  OUTLET 110V (WEATHER PROOF)
-  OUTLET 220V
-  SINGLE SWITCH
-  DOUBLE SWITCH
-  PANEL BOX

ELECTRICAL LAYOUT

ELECTRICAL LAYOUT	No.	Date	Notes	No.	Date	Revisions	Drawn By	Appr. By	CONSULTANTS: A & L ESTATE MANAGEMENT CONSULTANCY LIMITED #6 JADE BOULEVARD, EMPEROR COURT, BON AIR GARDENS, AROUCA TRINIDAD W.I. TEL: 642-4820 OR 681-7587	CLIENT: MINISTRY OF HOUSING LAND AND MARINE AFFAIRS JOB TITLE: NEIGHBOURHOOD UPGRADING PROGRAMME STARTER HOUSING UNITS		
	2 BEDROOM 2 Storey - Ground Floor Only									ENGINEER: FRANCIS ANTOINE	DATE: AUGUST 2013	SCALE: 3/8" = 1'-0"

GNC Services
For Architectural Designs & General Draughting
Drawn By: Noreen Christopher Checked By: