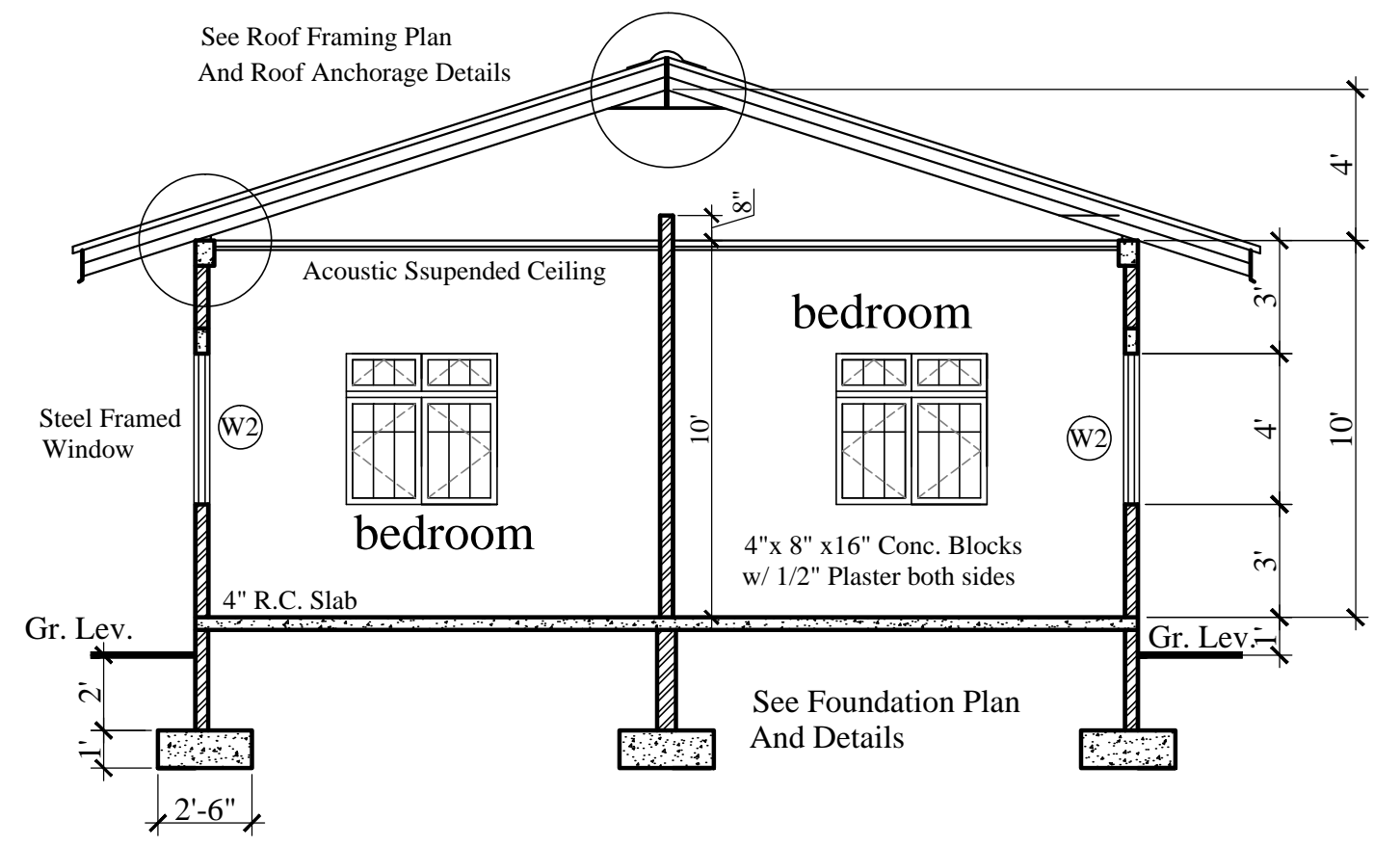


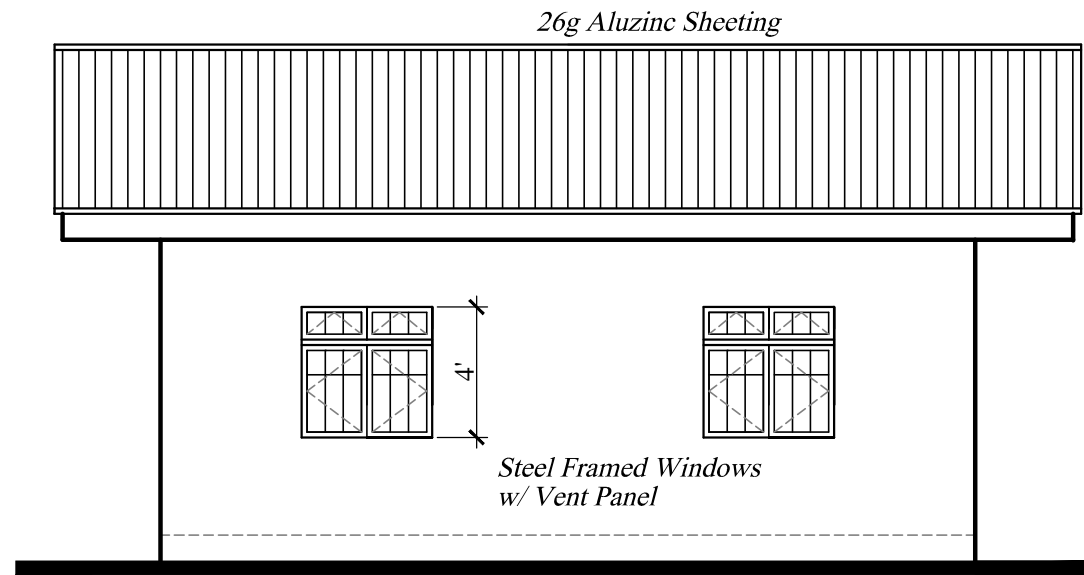
FLOOR PLAN

625.00 S.F.
2 Bedroom - 1 Bath Flat

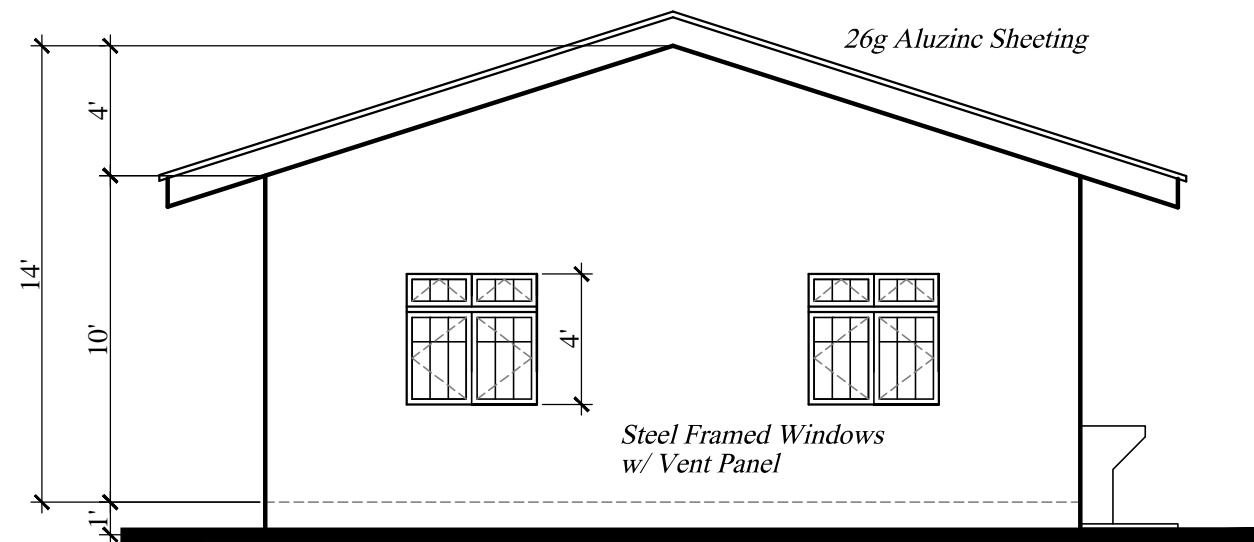


CROSS SECTION

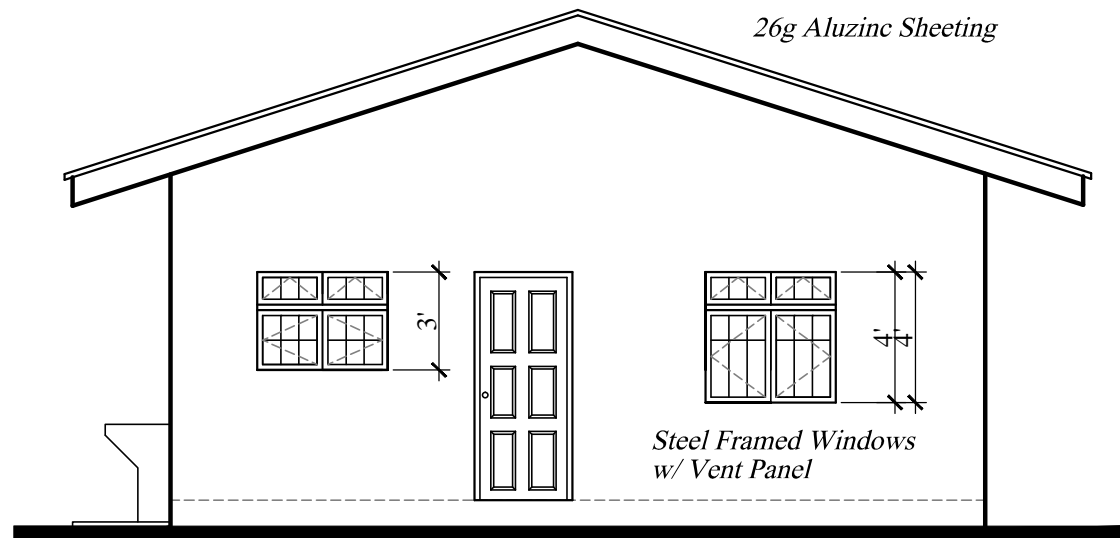
FLOOR PLAN AND CROSS SECTION	No.	Date	Notes	No.	Date	Revisions	Drawn By	Appr. By	CONSULTANTS: A & L ESTATE MANAGEMENT CONSULTANCY LIMITED #6 JADE BOULEVARD, EMPEROR COURT, BON AIR GARDENS, AROUCA TRINIDAD W.I. TEL: 642-4820 OR 681-7587	CLIENT: MINISTRY OF HOUSING LAND AND MARINE AFFAIRS				
	2 BEDROOM FLAT									JOB TITLE: NEIGHBOURHOOD UPGRADING PROGRAMME STARTER HOUSING UNITS				
								LGNC Services <i>For Architectural Designs & General Draughting</i> Drawn By: KURT FORDE Checked By: N.C.		ENGINEER: FRANCIS ANTOINE		DATE: AUGUST 2013	SCALE: 3/8" = 1'-0"	DWG. NO.: 2BF / 01



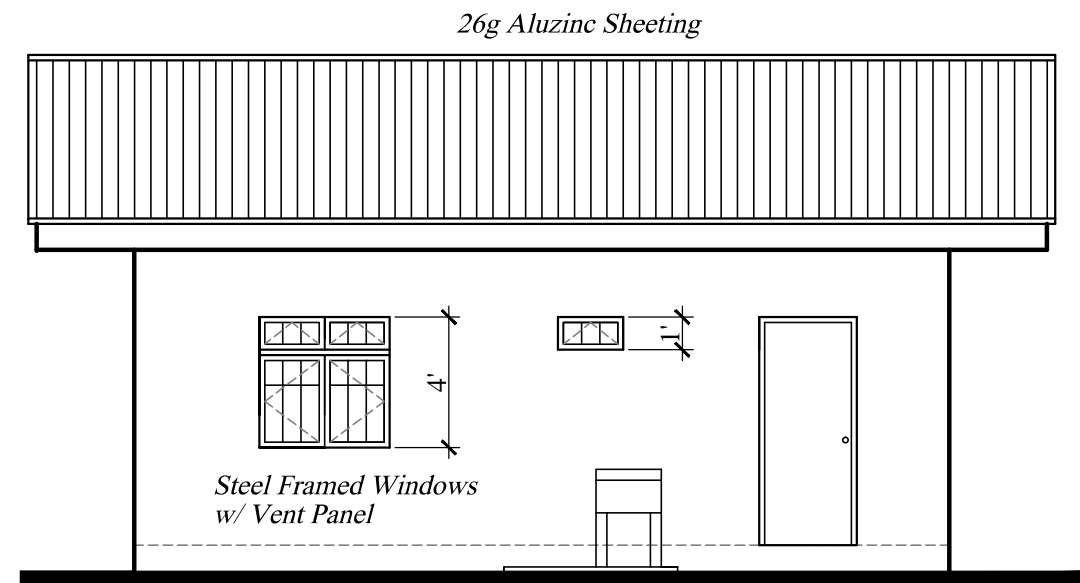
ELEVATION 2



ELEVATION 3

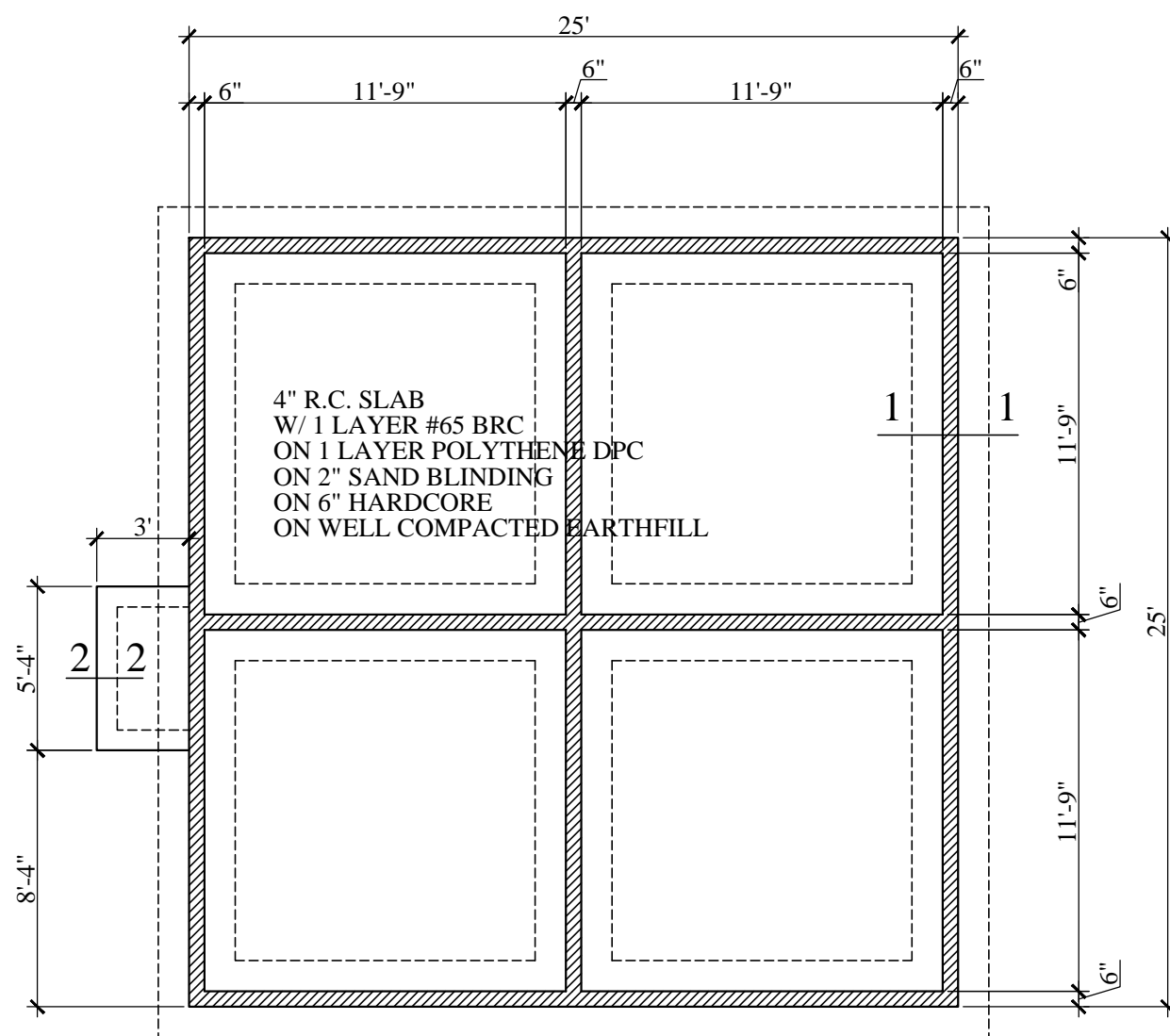


ELEVATION 1

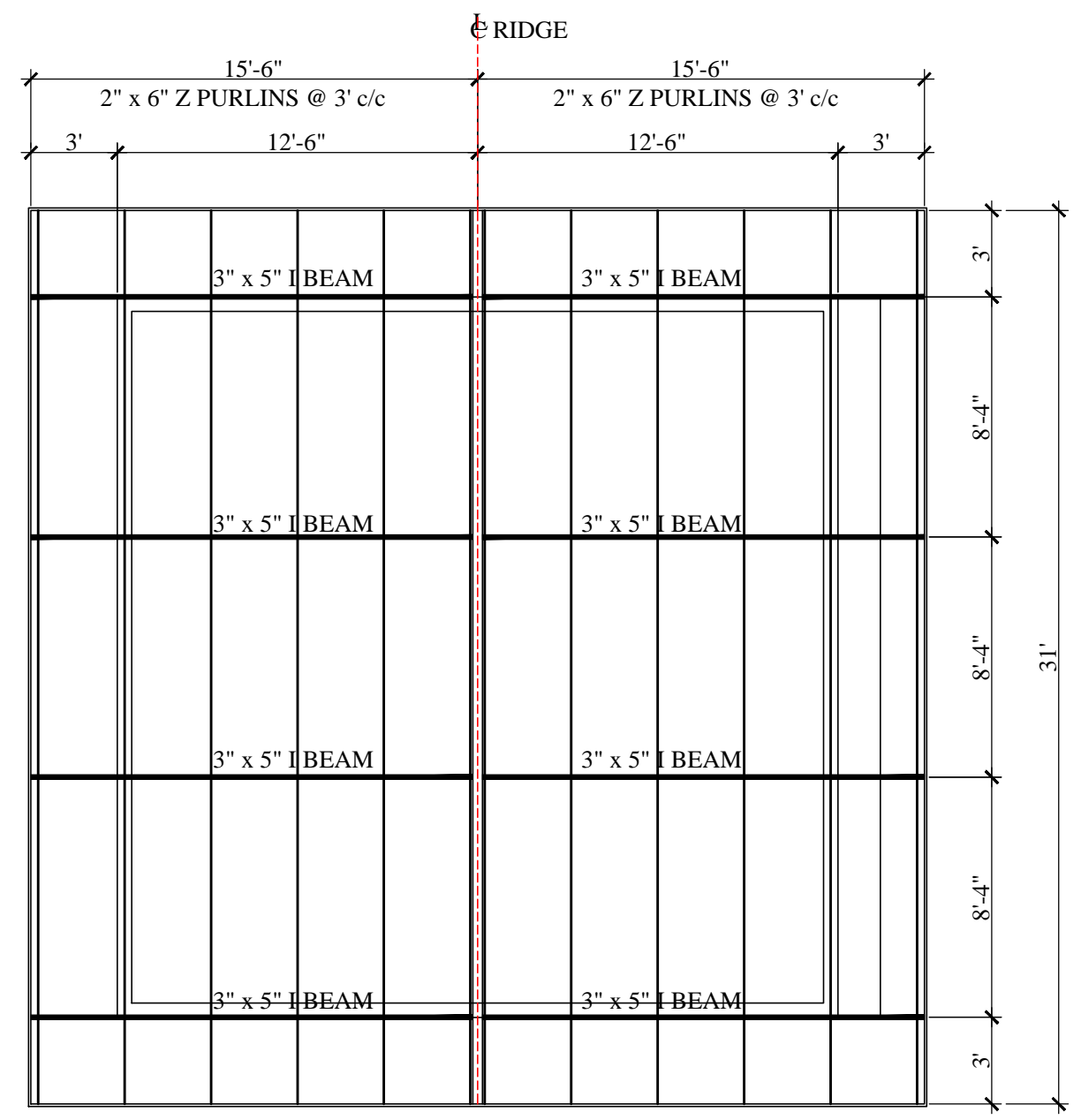


ELEVATION 4

ELEVATIONS	No.	Date	Notes	No.	Date	Revisions	Drawn By	Appr. By	CONSULTANTS: A & L ESTATE MANAGEMENT CONSULTANCY LIMITED #6 JADE BOULEVARD, EMPEROR COURT, BON AIR GARDENS, AROUCA TRINIDAD W.I. TEL: 642-4820 OR 681-7587	CLIENT: MINISTRY OF HOUSING LAND AND MARINE AFFAIRS			
	2 BEDROOM FLAT										JOB TITLE: NEIGHBOURHOODUPGRADING PROGRAMME STARTER HOUSING UNITS		
									GNC Services <i>For Architectural Designs & General Draughting</i> Drawn By: KURT FORDE Checked By: N.C.	ENGINEER: FRANCIS ANTOINE	DATE: AUGUST 2013	SCALE: 3/8" = 1'-0"	DWG. NO.: 2BF / 02



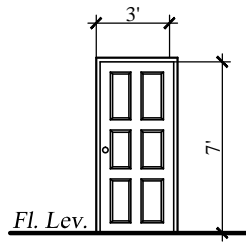
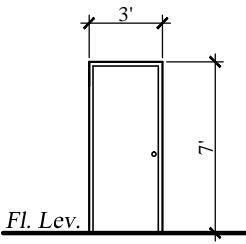
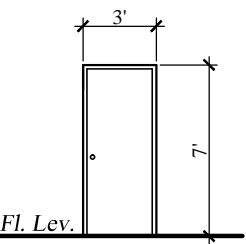
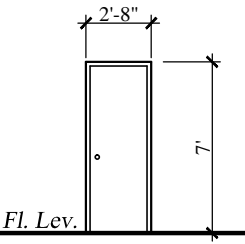
FOUNDATION PLAN



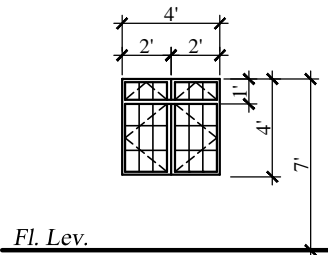
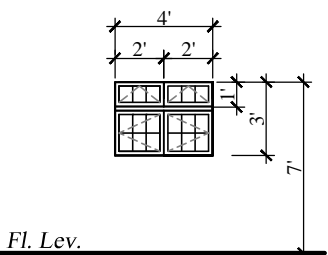
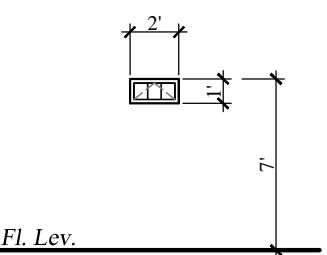
ROOF FRAMING PLAN

FOUNDATION AND ROOF PLANS	No.	Date	Notes	No.	Date	Revisions	Drawn By	Appr. By	CONSULTANTS: A & L ESTATE MANAGEMENT CONSULTANCY LIMITED #6 JADE BOULEVARD, EMPEROR COURT, BON AIR GARDENS, AROUCA TRINIDAD W.I. TEL: 642-4820 OR 681-7587	CLIENT: MINISTRY OF HOUSING LAND AND MARINE AFFAIRS		
	2 BEDROOM FLAT										JOB TITLE: NEIGHBOURHOOD UPGRADING PROGRAMME STARTER HOUSING UNITS	
							GNC Services <i>For Architectural Designs & General Drafting</i>	ENGINEER: FRANCIS ANTOINE	DATE: AUGUST 2013	SCALE: 3/8" = 1'-0"	DWG. NO.: 2BF / 03	
							Drawn By: Noreen Christopher	Checked By:				

DOOR SCHEDULE

				
DESCRIPTION	(D1)	(D2)	(D3)	(D4)
NO: REQUIRED	1	1	2	1
LOCATION	Entrance - Livivg & Dining	Kitchen	Bedrooms	Bath
REMARKS	Solid Core Panel Door	Solid Flush Door	Semi-Solid Flush Door	Semi-Solid Flush Door

WINDOW SCHEDULE

			
DESCRIPTION	(W1)	(W2)	(W3)
NO: REQUIRED	6	1	1
LOCATION	Living & Dining And Bedrooms	Kitchen	Bath
REMARKS	Steel Framed Windows w/ Burglar Proof Bars	Steel Framed Windows w/ Burglar Proof Bars	Top Hung Steel Framed Window w/ Burglar Proof Bars

DOOR & WINDOW SCHEDULE

2 BEDROOM FLAT

No.	Date	Notes	No.	Date	Revisions	Drawn By	Appr. By

CONSULTANTS:
A & L ESTATE MANAGEMENT CONSULTANCY LIMITED
 #6 JADE BOULEVARD, EMPEROR COURT,
 BON AIR GARDENS, AROUCA
 TRINIDAD W.I.
 TEL: 642-4820 OR 681-7587

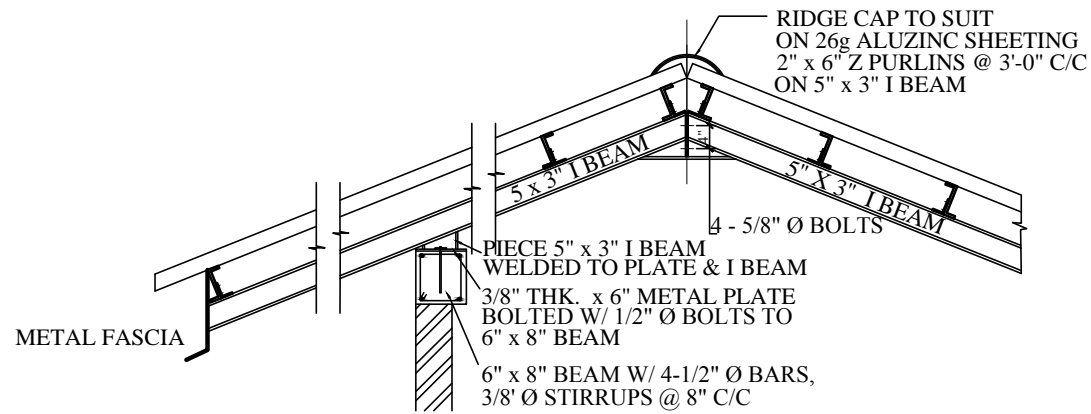
ENGINEER:
 FRANCIS ANTOINE

GNC Services
 For Architectural Designs & General Draughting
 Drawn By: Noreen Christopher Checked By:

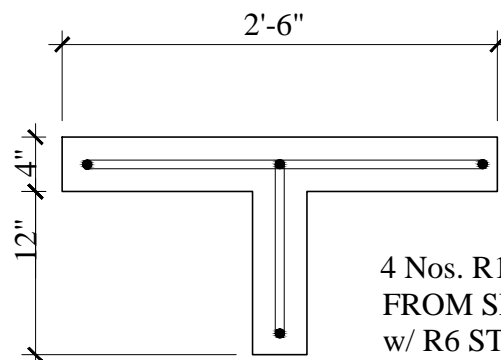
CLIENT:
 MINISTRY OF HOUSING LAND AND MARINE AFFAIRS

JOB TITLE:
 NEIGHBOURHOODUPGRADING PROGRAMME
 STARTER HOUSING UNITS

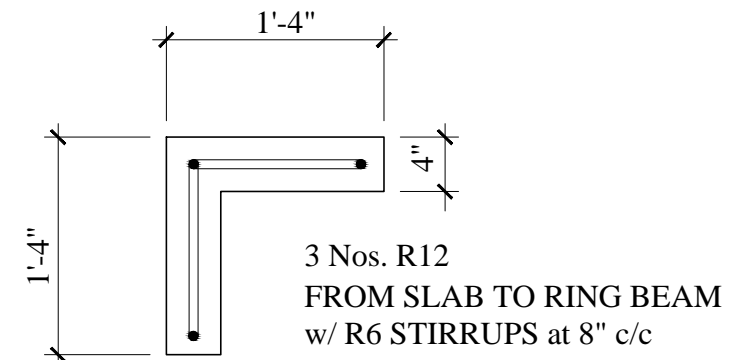
DATE: AUGUST 2013 **SCALE:** 3/8" = 1'-0" **DWG. NO.:** 2BF / 04



ROOF ANCHORAGE DETAIL

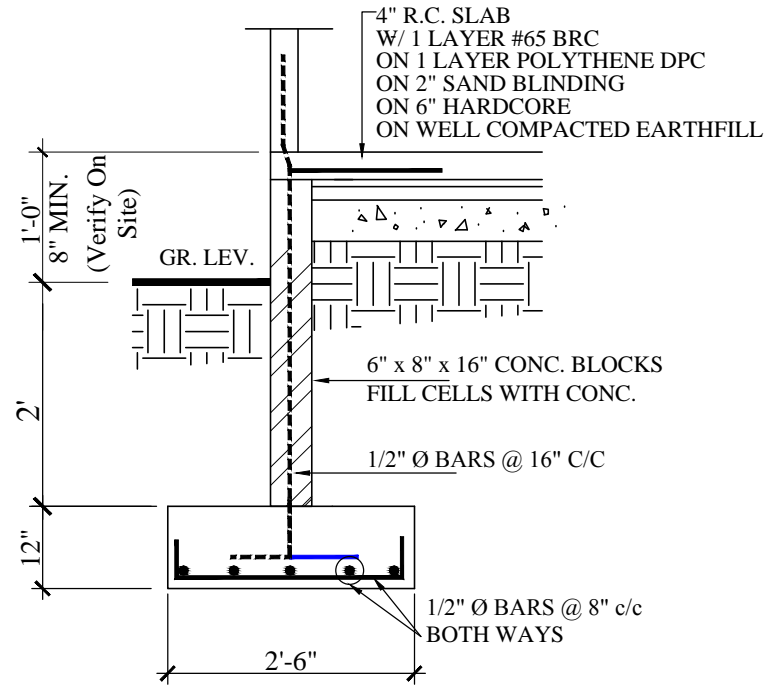


't' junction detail

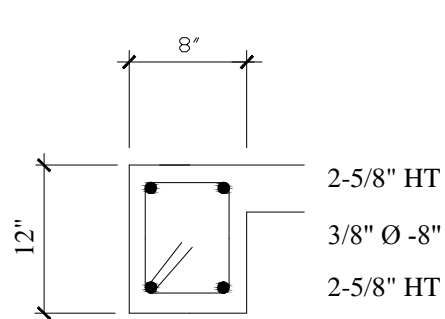


corner detail

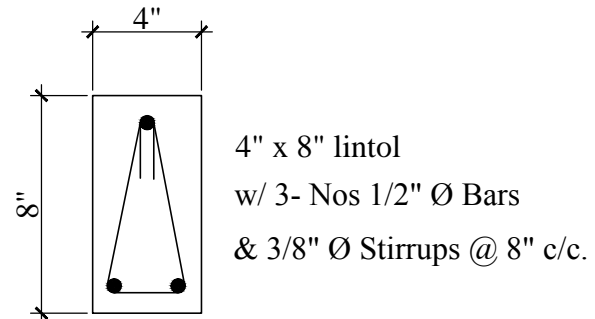
WALL STIFFENERS DETAILS



DETAIL 1-1



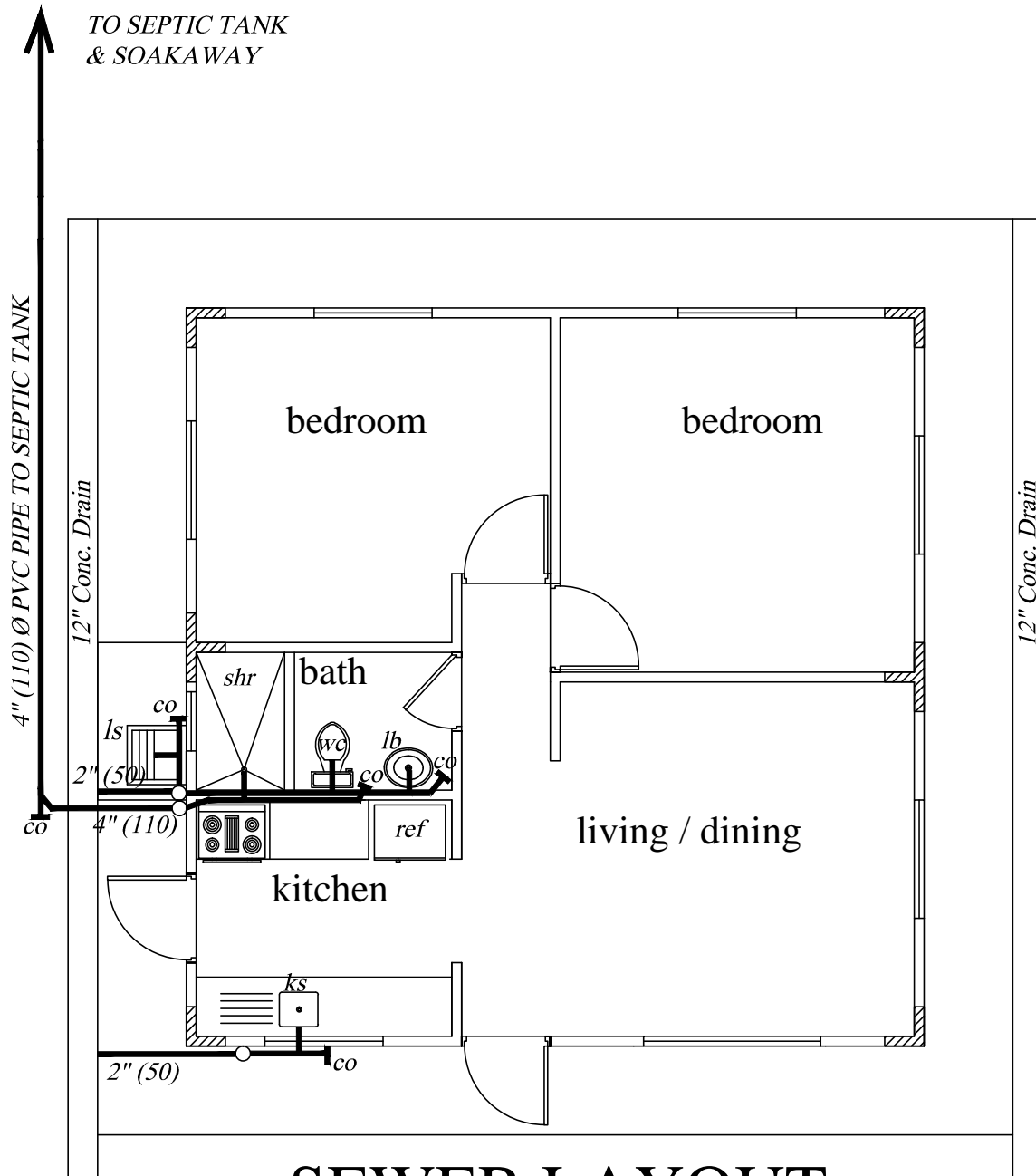
DETAIL 2-2



LINTOL DETAIL

TYPICAL DETAILS	No.	Date	Notes	No.	Date	Revisions	Drawn By	Appr. By	CONSULTANTS: A & L ESTATE MANAGEMENT CONSULTANCY LIMITED #6 JADE BOULEVARD, EMPEROR COURT, BON AIR GARDENS, AROUCA TRINIDAD W.I. TEL: 642-4820 OR 681-7587	CLIENT: MINISTRY OF HOUSING LAND AND MARINE AFFAIRS JOB TITLE: NEIGHBOURHOODUPGRADING PROGRAMME STARTER HOUSING UNITS		
	2 BEDROOM FLAT											ENGINEER: FRANCIS ANTOINE

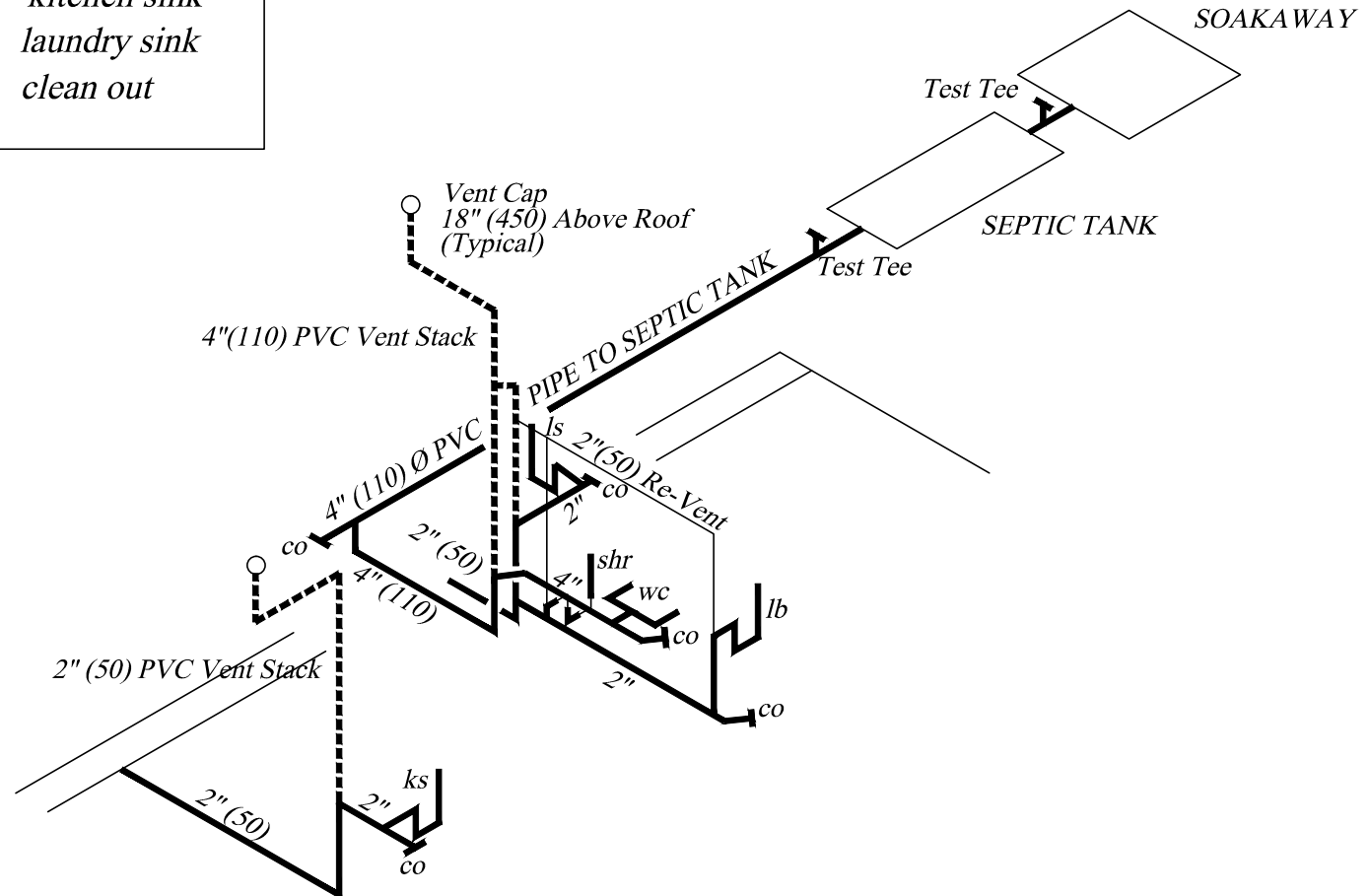
GNC Services
 For Architectural Designs & General Draughting
 Drawn By: Noreen Christopher
 Checked By:



SEWER LAYOUT

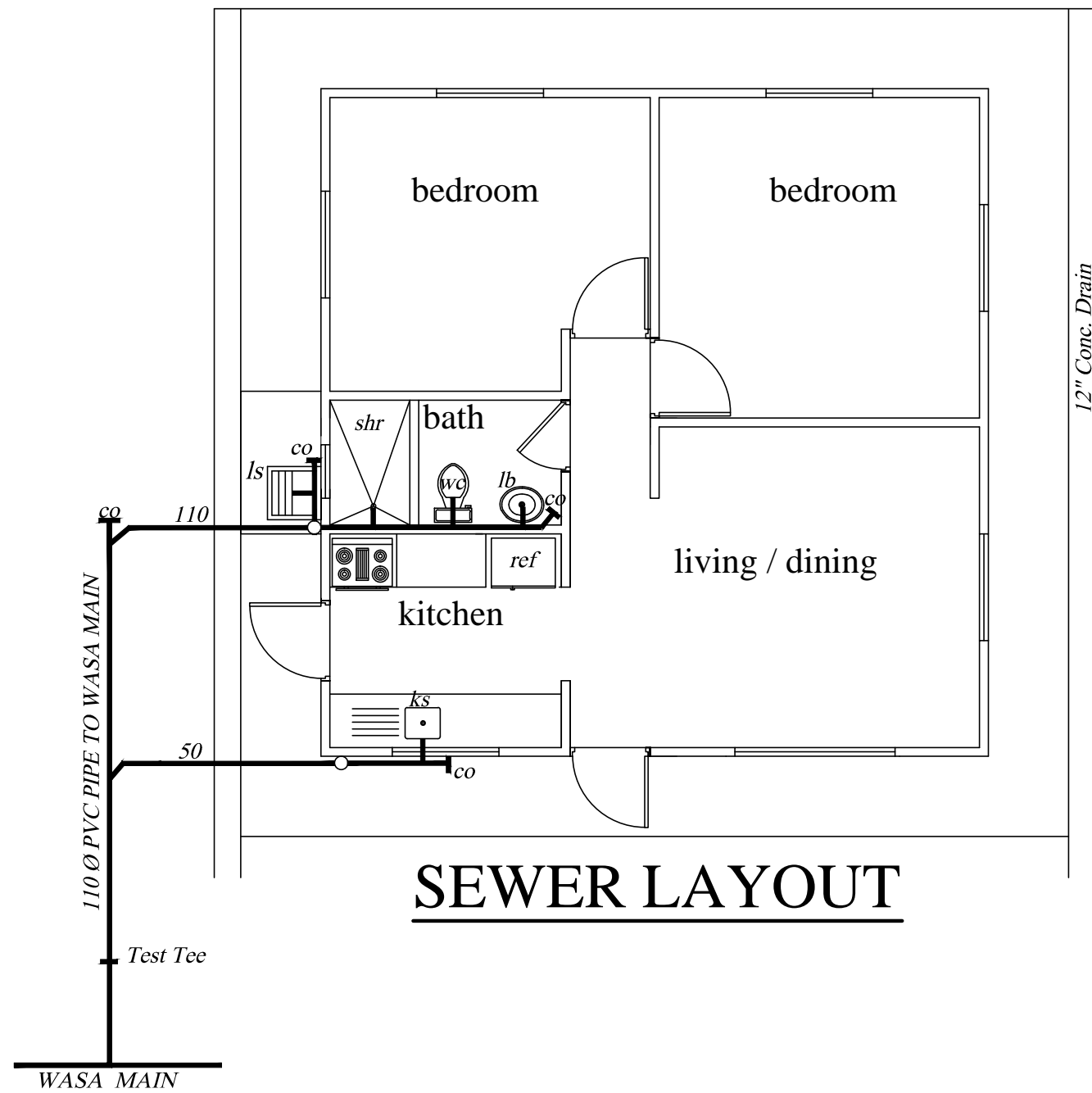
LEGEND

wc	water closet
shr	shower
lb	lavatory basin
ks	kitchen sink
ls	laundry sink
co	clean out



SEWER ISOMETRIC

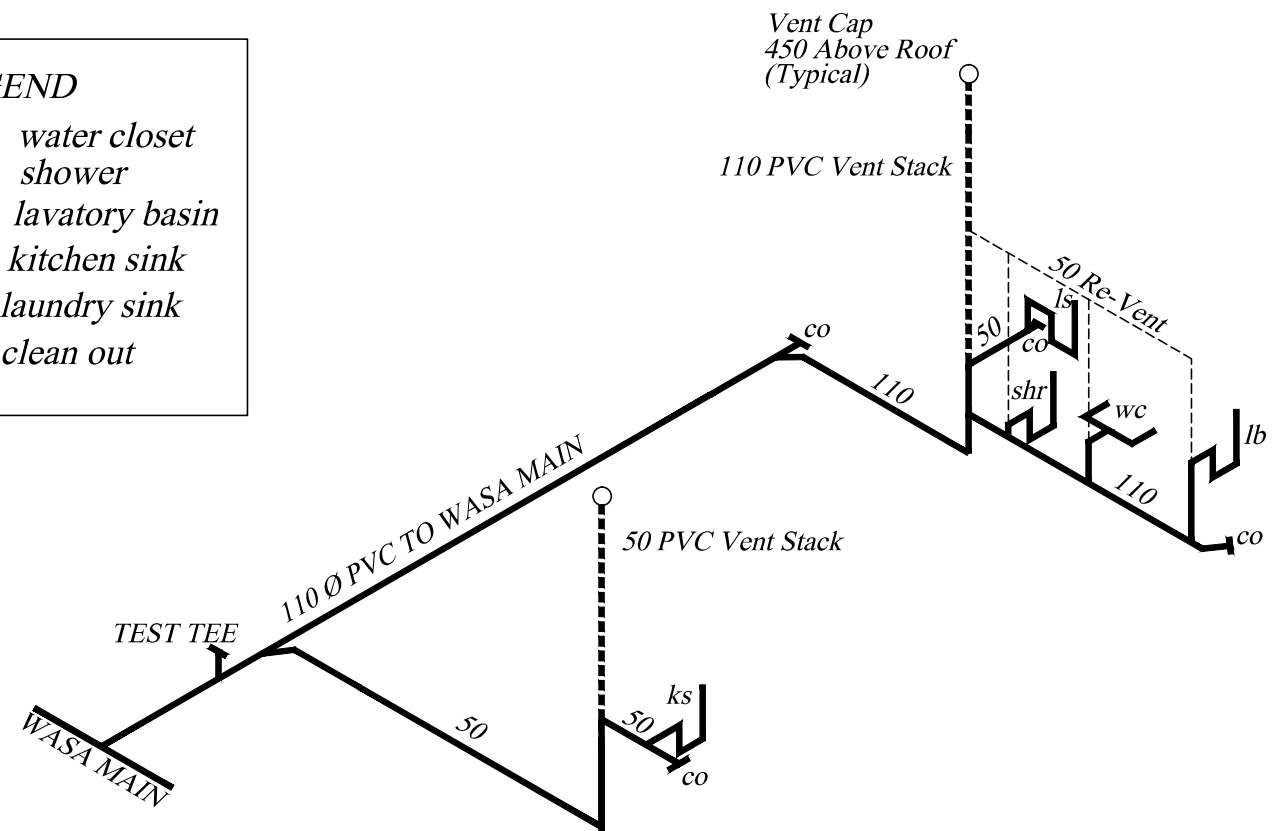
SEWER LAYOUT & ISOMETRIC (ST)	No.	Date	Notes	No.	Date	Revisions	Drawn By	Appr. By	CONSULTANTS: A & L ESTATE MANAGEMENT CONSULTANCY LIMITED #6 JADE BOULEVARD, EMPEROR COURT, BON AIR GARDENS, AROUCA TRINIDAD W.I. TEL: 642-4820 OR 681-7587	CLIENT: MINISTRY OF HOUSING LAND AND MARINE AFFAIRS			
	2 BEDROOM FLAT										JOB TITLE: NEIGHBOURHOOD UPGRADING PROGRAMME STARTER HOUSING UNITS		
								GNC Services For Architectural Designs & General Drafting Drawn By: Noreen Christopher Checked By:		Certified By: ALSTON FOURNILLIER	DATE: AUGUST 2013	SCALE: 3/8" = 1'-0"	DWG. NO.: 2BF / 06



SEWER LAYOUT

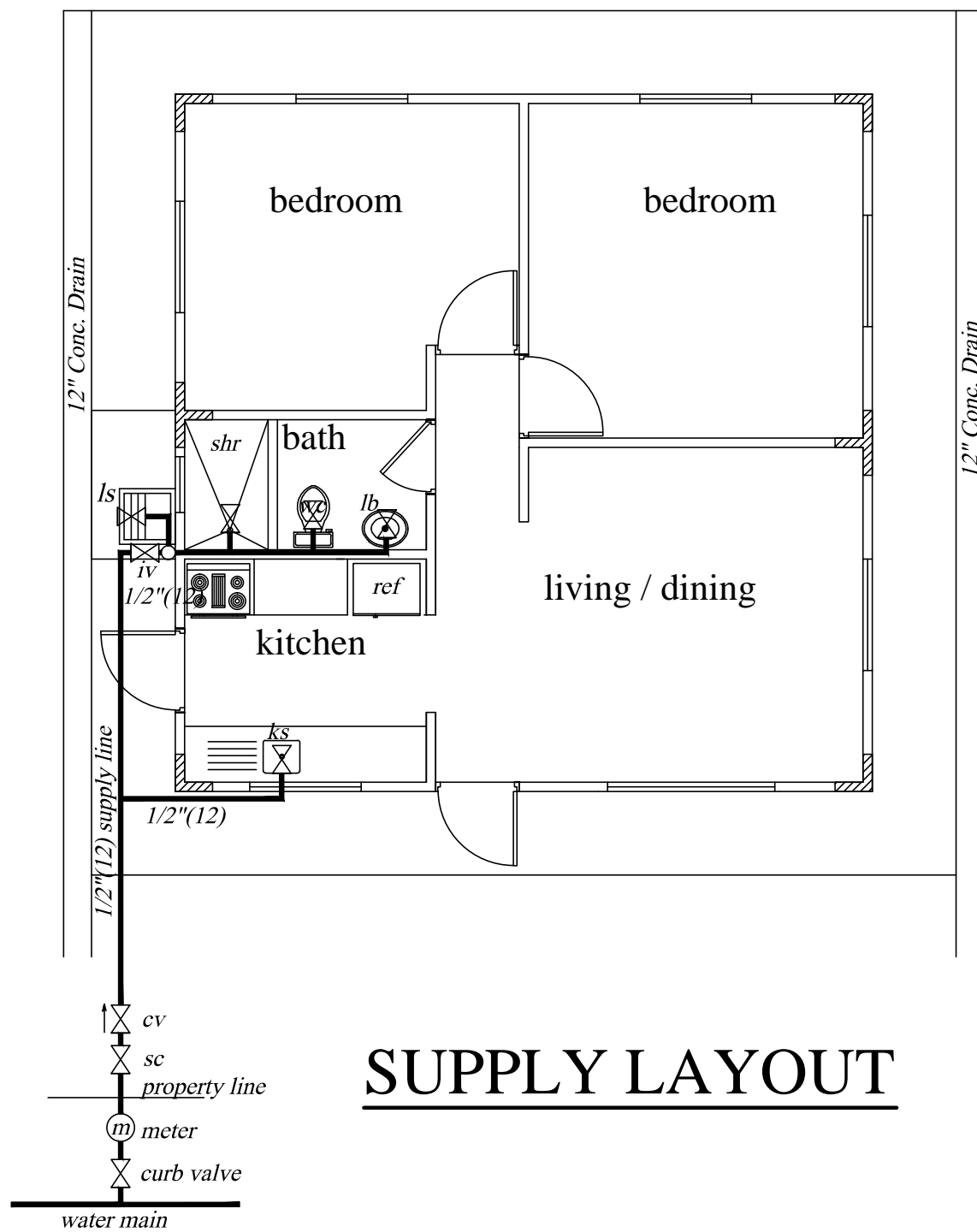
LEGEND

- wc water closet
- shr shower
- lb lavatory basin
- ks kitchen sink
- ls laundry sink
- co clean out

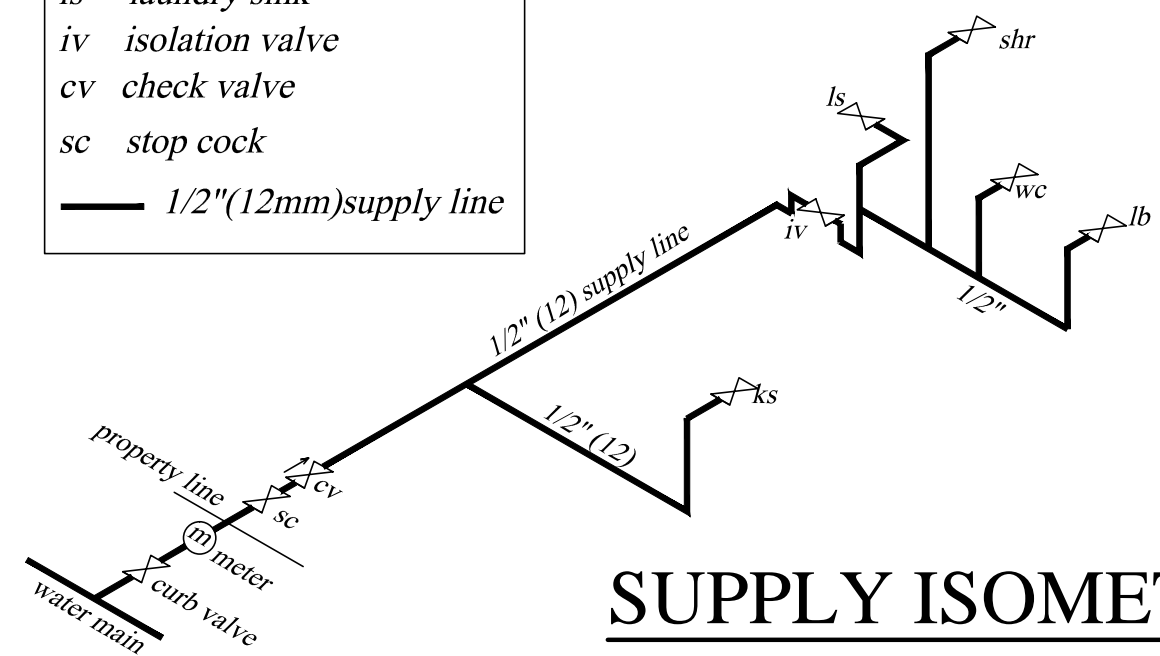


SEWER ISOMETRIC

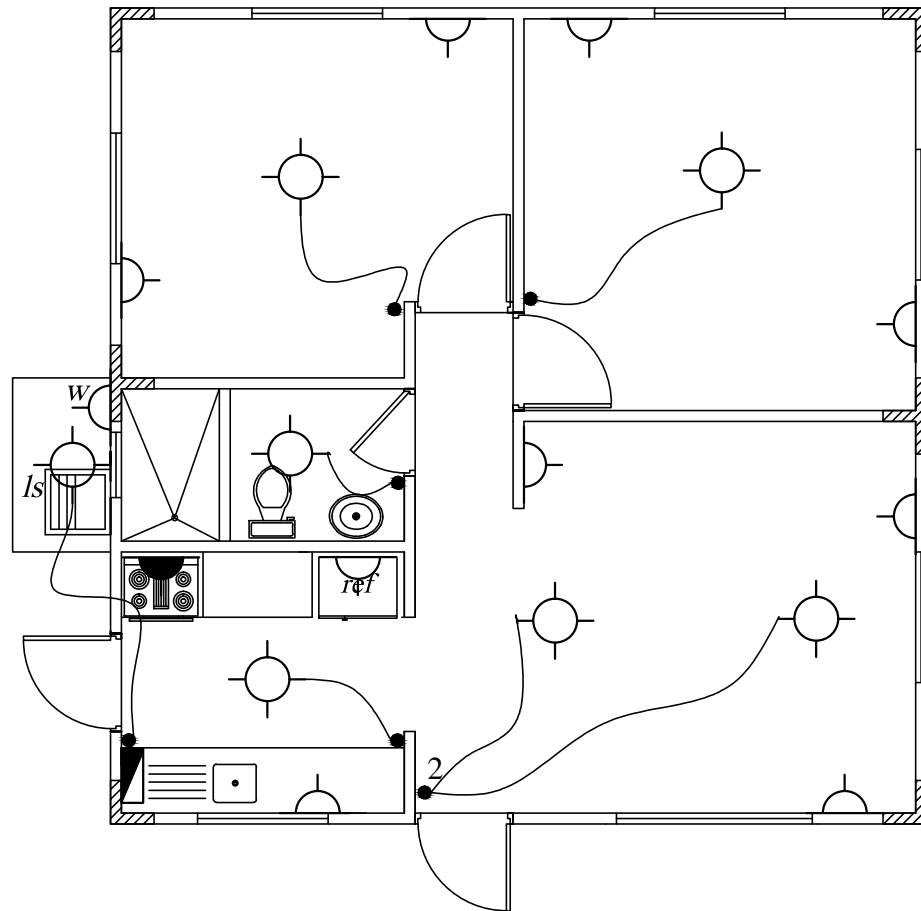
SEWER LAYOUT & ISOMETRIC	No.	Date	Notes	No.	Date	Revisions	Drawn By	Appr. By	CONSULTANTS: A & L ESTATE MANAGEMENT CONSULTANCY LIMITED #6 JADE BOULEVARD, EMPEROR COURT, BON AIR GARDENS, AROUCA TRINIDAD W.I. TEL: 642-4820 OR 681-7587	CLIENT: MINISTRY OF HOUSING LAND AND MARINE AFFAIRS			
	2 BEDROOM FLAT									JOB TITLE: NEIGHBOURHOOD UPGRADING PROGRAMME STARTER HOUSING UNITS			
							GNC Services <i>For Architectural Designs & General Draughting</i>		Certified By: ALSTON FOURNILLIER		DATE: AUGUST 2013	SCALE: 1:100	DWG. NO.: 2BF / 06A
							Drawn By: Noreen Christopher		Checked By:				

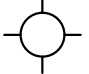
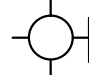
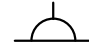







LEGEND
 wc water closet
 shr shower
 lb lavatory basin
 ks kitchen sink
 ls laundry sink
 iv isolation valve
 cv check valve
 sc stop cock
 — 1/2"(12mm)supply line



SUPPLY LAYOUT & ISOMETRIC	No.	Date	Notes	No.	Date	Revisions	Drawn By	Appr. By	CONSULTANTS: A & L ESTATE MANAGEMENT CONSULTANCY LIMITED #6 JADE BOULEVARD, EMPEROR COURT, BON AIR GARDENS, AROUCA TRINIDAD W.I. TEL: 642-4820 OR 681-7587	CLIENT: MINISTRY OF HOUSING LAND AND MARINE AFFAIRS	
	2 BEDROOM FLAT										JOB TITLE: NEIGHBOURHOODUPGRADING PROGRAMME STARTER HOUSING UNITS
							GNC Services For Architectural Designs & General Drafting	Certified By: ALSTON FOURNILLIER	DATE: AUGUST 2013	SCALE: 3/8" = 1'-0"	DWG. NO.: 2BF / 07
							Drawn By: Noreen Christopher	Checked By:			



-  CEILING LIGHT
-  WALL LIGHT
-  OUTLET 110V
-  OUTLET 110V
(WEATHER PROOF)
-  OUTLET 220V
-  SINGLE SWITCH
-  DOUBLE SWITCH
-  PANEL BOX

ELECTRICAL LAYOUT

ELECTRICAL LAYOUT	No.	Date	Notes	No.	Date	Revisions	Drawn By	Appr. By	CONSULTANTS: A & L ESTATE MANAGEMENT CONSULTANCY LIMITED <small>#6 JADE BOULEVARD, EMPEROR COURT, BON AIR GARDENS, AROUCA TRINIDAD W.I. TEL: 642-4820 OR 681-7587</small>	CLIENT: MINISTRY OF HOUSING LAND AND MARINE AFFAIRS JOB TITLE: NEIGHBOURHOODUPGRADING PROGRAMME STARTER HOUSING UNITS		
	2 BEDROOM FLAT										ENGINEER: FRANCIS ANTOINE	DATE: AUGUST 2013